

County: **Santa Barbara**
USGS Quad: **Dos Pueblos Canyon**

Thomas Guide Location
993 B x 2
NOAA Chart: **18721**

Latitude N
34.435
Longitude W
119.928333

Last Page Update : 6/30/2014

SITE DESCRIPTION:

THIS SITE IS LOCATED IN SANTA BARBARA COUNTY DIVISION M. This is a small, intermittent creek which empties out onto a small fine-grained sand beach backed by a cobble-boulder storm berm. Tidal wash over occurs into a seasonal lagoon at creek beach. Mouth is probably open to ocean during winter rains only. The Sunny Sea Farms Neushul Mariculture grows macroalgae by the Ellwood pier near Eagle Creek.

SEASONAL and SPECIAL RESOURCE CONCERN

Whenever creek mouth is open (normally only during rainy season) - wetland biota is at risk.

RESOURCES OF PRIMARY CONCERN

Red-legged frogs and Southern sea otters have been known to move through the area.

Tidewater goby

CULTURAL, HISTORIC, and ARCHEOLOGICAL SENSITIVITIES

Cultural, Historical, and Archeological sites are known to exist in the area, however, the exact locations of these sites must be ascertained by contacting the Native American Heritage Commission at (916) 373-3710 and State Office of Historical Preservation (916) 445-7000, and/or the Central Coast Archeological Information Center (805) 893-7341.

KEY CONTACTS: Trustee (T); Entry/Owner/Access (E); Cultural (C); or Other Assistance (O)

Type	Name / Title	Organization	Phone
E	Ellwood Plant (Emergency Numbers)	Venoco	(805) 961-2339
C	Lynn Gambell Coordinator	Central Coast Archeological Information Center	(805) 893-7341
T	Kai Lampson Marine Biologist	CDFW - (Nearshore Species)	(805) 965-7216
E	D.J. Limardi Director of Golf Operations	Sandpiper Golf Course (Access)	(805) 968-1541
C	Office of Historic Preservation (SHPO)	California State Parks (Sacramento Office)	(916) 445-7000

ADDITIONAL SITE SUMMARY COMMENTS:

4-630 -C Site Strategy - Eagle Canyon Creek

County and Thomas Guide Location

993 B x 2 Santa Barbara

NOAA CHART

18721

4-630 -C

Latitude N

34.435

Longitude W

119.928333

CONCERNS and ADVICE to RESPONDERS:

Last Page Update : 6/30/2014

Primary spill threat from marine source. The primary objectives are to minimize oiling of stream and lagoon, pre-clean debris, and clean oil from shorelines. The lagoon is habitat for sensitive species. Both habitat and species can be injured by oil and response/cleanup activities unless responders minimize disturbance in stream, lagoon, and associated vegetation; avoid trampling oil into sediments; and follow protective conditions from IC and resource biologists.

HAZARDS and RESTRICTIONS:

Water Contamination - Unhealthy levels of coliform bacteria have been found intermittently in streams and on beaches in the Santa Barbara County area. Check with the Santa Barbara Ocean Quality Hotline, 805-681-4949, regarding health conditions prior to engaging in any activities which would require direct water contact. Use appropriate PPE, safety procedures, and include reference to potential health problems in any site safety plan.

SITE STRATEGIES

Strategy 4-630.1 Objective: Sandbag Dams - Build a sandbag dam to prevent oil from polluting unoiled areas.

Sandbag Dams - Build a sandbag exclusion/containment dam using onsite materials or imported materials as directed by DFG biologist. Use clean low silt content sand. If using onsite materials obtain only from unvegetated areas. Install underflow pipes and/or a spillway to regulate water flows as conditions dictate. Closely regulate water levels to reduce collateral oiling. If there is skimmable oil present, deploy sorbents and contact the IC immediately regarding the use of skimmers and or other mechanical means for collecting oil.

Strategy 4-630.2 Objective: Filter Barrier - Minimize oil contamination in unoiled areas using a filter barrier when berming and booming methods are not feasible.

Filter Barrier - Construct a filter barrier across the channel or inlet when the inlet is narrow, water flows are low, the bottom can receive and hold metal stakes, the spill is heavy oil, and berming or booming methods are not feasible or necessary. Monitor barrier and replace sorbents as necessary to maintain effectiveness.

Strategy 4-630.3 Objective: Shoreline Precleaning - Prevent oiling of wrack, trash, and other materials to reduce collateral contamination and disposal problems.

Shoreline Precleaning - Consult with resource trustees regarding wildlife issues before undertaking this activity. Hand crews to move and store kelp, driftwood, vegetative debris, trash, and other materials above high-tide line. Dispose of trash. Replace unoiled debris in its former location once the threat of oiling is past. If heavy equipment is required for this operation, request trustee consultation and IC for authorization.

Table of Response Resources

strategy number	harbor boom	swamp boom	Other boom type	sorb boom	Anchoring no type and gear	Boom boat	Skiffs punts	Skimmers No Type	Special Equipment or comment No and kinds	staff deploy	Staff tend
4-630.1				40				55	50 Sand Bags, 1 Roll Plastic, 3 Culvert Pipes, 1 Hand Tools	5	2
4-630.2				40				78	60 ft Construction Fencing, 16 Stakes (metal)S, 1 Stake Driver, 1 Hand Tools	5	2
4-630.3										5	

LOGISTICS

DIRECTIONS: to site (by land and/or by water, to nearest launch ramp and are access permits required.)

From us 101 (west of Santa Barbara) exit 0.25 mi n of Ellwood pier road, enter at 7979 Hollister Ave. Through Venoco (formerly Mobil) facility; see contact below. The area is west of Sandpiper Golf Course.

LAND ACCESS: Access for foot traffic only.

WATER LOGISTICS:

Limitations: depth, obstruction

Launching, Loading, Docking and Services Available:

Santa Barbara Harbor is the nearest full service civilian harbor for full service berthing, launching and fueling. Response vessels could be loaded and small boats can be launched at Gaviota Pier with permission from State Beaches and Parks. Larger vessels can be loaded at Ellwood Pier with permission from Venoco and at Goleta Pier with permission from Santa Barbara County Parks.

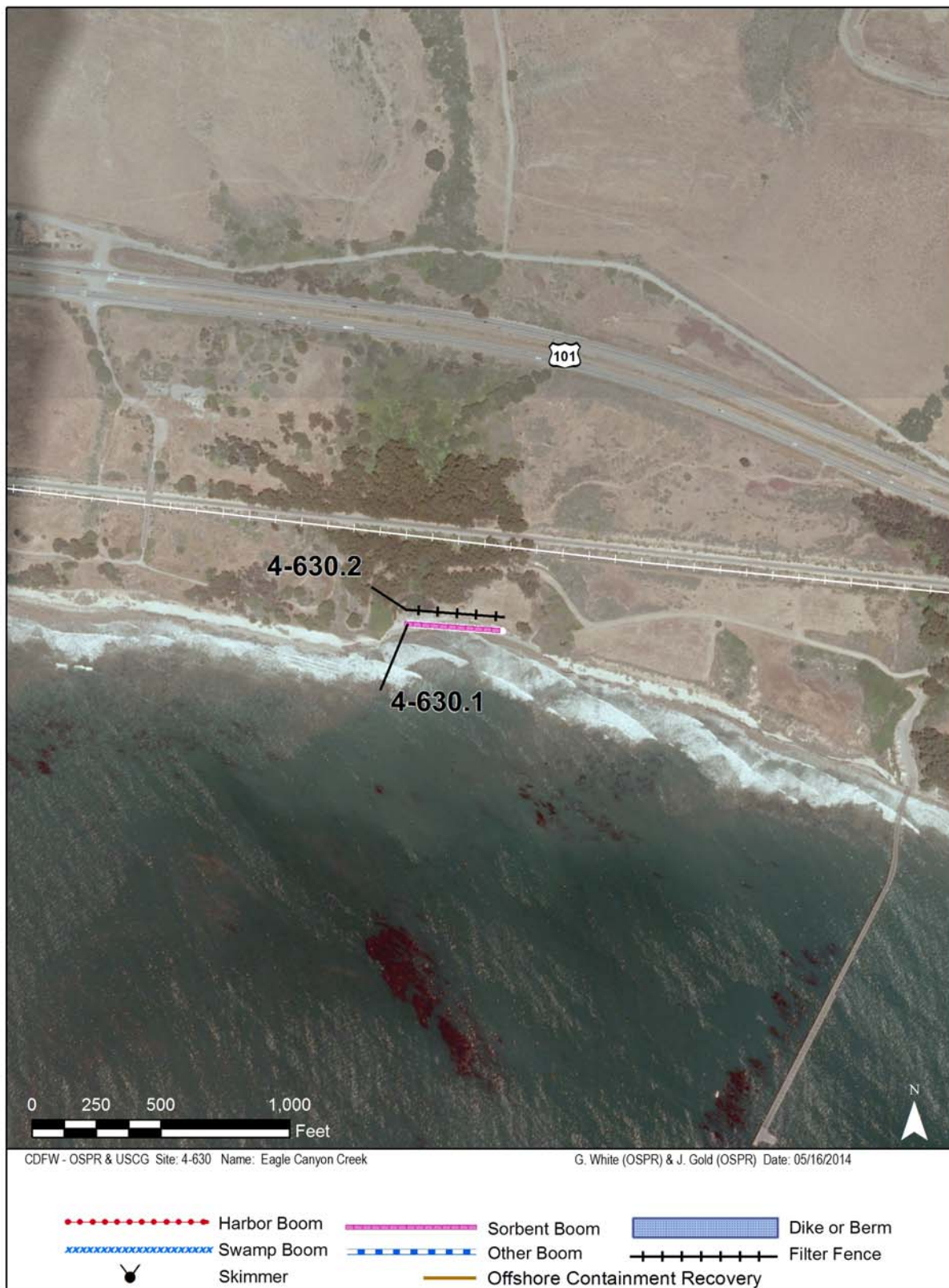
FACILITIES, STAGING AREAS, POSSIBLE FIELD POSTS AND EQUIPMENT AVAILABLE:

SPECIAL CONSIDERATIONS

California Department of Fish and Wildlife must be consulted before the staging of motorized equipment and heavy traffic are permitted.

COMMUNICATIONS PROBLEMS:

ADDITIONAL OPERATIONAL COMMENTS:



Imagery: NAIP 2010 (Summer) 4-Band