

4-645-A Site Summary - Devereux Slough**4-645-A****County:** Santa Barbara **ACP Division/Segment:** SB - N - S02**NOAA Chart:** 18721**Map Book:** 993 H x 4-5**Decimal Degrees:** 34.41047 -119.88126**Site Description:**

The lagoon lies just NW of Coal Oil point. This 45-acre slough contains freshwater emergent vegetation, salt marsh, tidal flats and sand dune habitats. The mouth is generally cut off from the ocean by a well-developed sand berm except during heavy rainfall. East and West of the slough are extensive medium-grained sand beaches backed by vegetated dunes. Large surf and strong winds are common, especially in winter. The slough is part of the larger coal oil point natural reserve, managed by the University of California at Santa Barbara. Campus Point State Marine Conservation Area is included in this site. Abundant seabirds, shorebirds, waterfowl and raptors are present. Extensive eelgrass and kelp bed are offshore. There are research plot resources at various habitats.

Resources at Risk:**ESI and Habitat:** 10A Salt - and brackish-water marshes

10B Freshwater marshes

9A Sheltered tidal flats

9B Vegetated low banks

3A Fine- to medium-grained sand beaches

List of Resources at Risk:

	Resource Name	Status	Presence	Sensitivity
Amphibians	California red-legged frog	FT, SSC	Year-round	
Birds	Western snowy plover	FT, SSC	Year-round	
Birds	Belding's savannah sparrow	SE	Year-round	
Birds	California least tern	FE, SE	Apr-Sep	
Fish	tidewater goby	FE, SSC	Year-round	
Invertebrates	Pismo clam		Year-round	
Mammals	Southern sea otter	FT, SP	Year-round	
Plants	Ventura marsh milk-vetch	FE, SE	Year-round	
Plants	kelp beds		Year-round	

FT-Federally Threatened, FE-Federally Endangered, FP-Federally Protected, SE-State Endangered, ST-State Threatened, SP -State Protected, SR-State Rare, SSC-Species of Special Concern, BGEPA-Bald and Golden Eagle Protection Act, SSSP-State Special Status Species

List of Key Contacts:

Type	Name/Title	Organization	Phone
C	/	Central Coast Information Center	(805) 682-4711
C	/Coordinator	Native American Heritage Commission	(916) 373-3710
E	Cristina Sandoval/Director	University California Santa Barbara, Coal Oil Pt.	(805) 451-2403
E	Dispatch 24 Hr./Campus Police	University of California Santa Barbara	(805) 893-3447
T	Steve Wertz/Senior Env. Scientist Supervisor	California Department of Fish and Wildlife, MPAs	(562) 343-3808
T	/Spill Response Coordinator	US Fish and Wildlife Service, Federal T&E Species	(805) 644-1766

C – Cultural, Historic, Archaeological; E – Entry/Owner/Access; O – Other; S – Safety; T – Trustee; X – Exclusion or Security

Additional Site Summary Comments:

Western snowy plovers nest from Mar-Sep and California least terns' nest from Apr-Sep.

Concerns and Advice to Responders:

USE OF MECHANICAL EQUIPMENT WILL REQUIRE PRIOR DISCUSSION WITH THE RESERVE MANAGER.

The lagoon is habitat for endangered fish. Two T/E birds' nest in the dunes and upper beaches from Mar-Sep. Animals and habitat can be injured by oil/response activities unless responders minimize disturbance in lagoon, and associated vegetation; avoid disturbing the dunes and upper beaches; and only drive vehicles on wet sand; avoid trampling oil into sediments and follow protective conditions from IC and resource biologists.

Hazard and Restrictions:

Unhealthy levels of coliform bacteria have been found intermittently in streams and on beaches in this area. Use appropriate PPE, safety procedures, and include reference to potential health problems in any site safety plan.

Site Strategies:**Site Validation Level: III**

Strategy: 4-645.1 Objective: Exclude Oil

Strategy: Deploy exclusion booms across the inlet to minimize the likelihood of oiling the estuary. Place the booms in a configuration that forms an adjustable oil collection pocket that can accommodate changes in flow direction. Back exclusion booms with sorbent booms to minimize leakage. Line the shorelines and any side channels within the inlet to prevent collateral oiling. If there is recoverable oil on-water, deploy sorbents and contact the IC immediately regarding the use of skimmers. Monitor, adjust, and replace booms as needed to maintain effectiveness.

Table of Response Resources

Equipment	Sub-Type	Size	Unit	QTY	Unit
Boom	Swamp Boom			600	feet
Boom	Sorbent Boom			600	feet
Staff				5	
Anchor				6	
boat	Skiff			1	
skimmer				1	

Last Page Update

Strategy Updated:

Last Test: 10/23/2019

Logistics:

Directions: From U.S. 101, North of Santa Barbara, take Storke Road exit- south to Isla Vista (residential district for UCSB). At the corner of Storke and El Colegio roads, take Slough Road southwest to the reserve area parking lot.

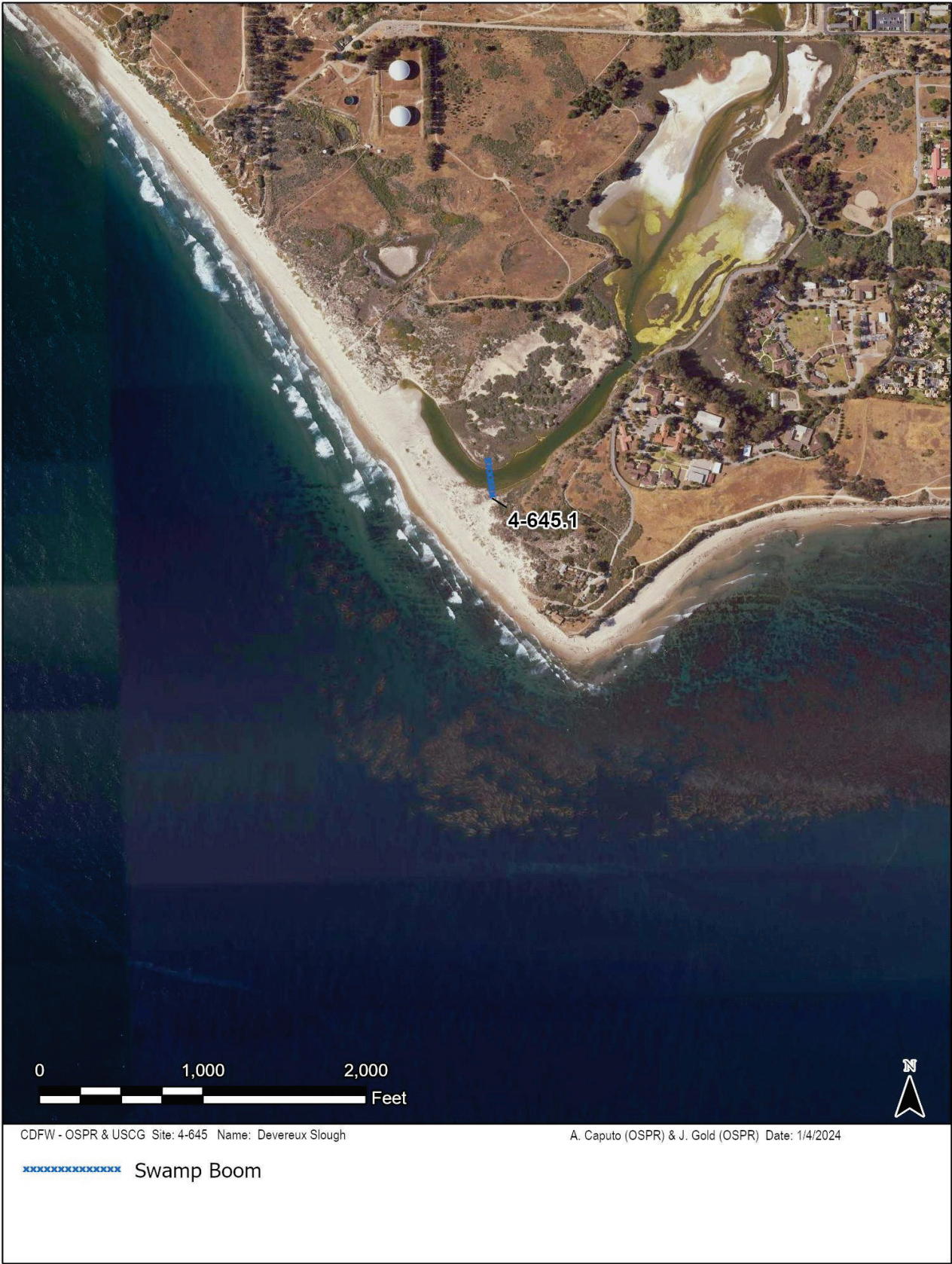
Land Access: A. Access - Two footpaths provide access to the slough and one footpath provides access to the beach. USE OF MECHANICAL EQUIPMENT WILL REQUIRE DISCUSSION WITH RESERVE MANAGER. If mechanical equipment is used, keep below high tide line on the wet sand, keep vehicle speed under 5 mph and maintain radio communication with all vehicles on the beach. All beach access will be approved by IC under recommendation from agency resource biologist.

On-Water Limitations: Santa Barbara Harbor is the nearest full service civilian harbor for full-service berthing, launching and fueling.

Facilities, Staging Areas, Command Posts, Available Equipment: Staging area: Coal Oil Point Reserve Parking Potential command post sites: Contact UCSB Closest airport is in Santa Barbara, 2.5 miles east.

Communications Problems: none

Additional Operational Comments: Due to the occurrence of western snowy plovers and/or California least terns at this site, please review the Sandy Beach Site Summary and Strategies (Site 4-000-A) for information on response operations when dealing with these sensitive species. Response activities should avoid impacting the fragile dune vegetation. Moderate recreational use (primarily surfing) especially during the summer. Protect the Marine Protected Area (MPA) boundaries.



CDFW - OSPR & USCG Site: 4-645 Name: Devereux Slough

A. Caputo (OSPR) & J. Gold (OSPR) Date: 1/4/2024

XXXXXXXXXXXX Swamp Boom