

**4-625-A Site Summary - Naples****4-625-A****County:** Santa Barbara **ACP Division/Segment:** SB - M - S01 SB - M - S02**NOAA Chart:** 18721 **Map Book:** 992 G-HJ x 1-2 **Decimal Degrees:** 34.4403 -119.964**Site Description:**

Bounded by Dos Pueblos Canyon to the west and Eagle Canyon to the east. Naples area is approximately two miles long. The shoreline is primarily wave-cut rock platforms with some fine-grained sand and mixed sand and gravel beaches backed by coastal bluffs. Offshore is Naples reef a popular fishing, diving and marine research area. Offshore Dos Pueblos Ranch is The Cultured Abalone that grows red abalone. Naples State Marine Conservation Area is located at this site. Harbor seal pupping and breeding occur from Dec-May, with significant haul out occurring year-round. Grunion spawning occurs in the spring and summer during high tides. Extensive kelp beds exist offshore.

**Resources at Risk:****ESI and Habitat:** 6A Gravel Beach

5 Mixed sand and gravel beaches

3A Fine- to medium-grained sand beaches

2A Exposed wave-cut platforms in bedrock, mud, or clay

1A Exposed Rocky Shore

**List of Resources at Risk:**

	Resource Name	Status	Presence	Sensitivity
Fish	California grunion		Mar-Aug	
Mammals	Southern sea otter	FT, SP	Year-round	
Mammals	harbor seal	FP	year-round	

FT-Federally Threatened, FE-Federally Endangered, FP-Federally Protected, SE-State Endangered, ST-State Threatened, SP -State Protected, SR-State Rare, SSC-Species of Special Concern, BGEPA-Bald and Golden Eagle Protection Act, SSSP-State Special Status Species

**List of Key Contacts:**

Type	Name/Title	Organization	Phone
C	/	Central Coast Information Center	(805) 682-4711
C	/Coordinator	Native American Heritage Commission	(916) 373-3710
T	Steve Wertz/Senior Env. Scientist Supervisor	California Department of Fish and Wildlife, MPAs	(562) 343-3808
T	Justin Viezbicke/Marine Mammal Stranding	NOAA National Marine Fisheries Service	(562) 506-4315
T	/Spill Response Coordinator	US Fish and Wildlife Service, Federal T&E Species	(805) 644-1766

C – Cultural, Historic, Archaeological; E – Entry/Owner/Access; O – Other; S – Safety; T – Trustee; X – Exclusion or Security

**Additional Site Summary Comments:**

**Concerns and Advice to Responders:**

Inshore waters and shorelines contain sensitive habitat for invertebrates, birds, sea otters, and other marine mammals which can be injured or killed by oil. Because there are no practicable onshore response strategies for protecting these resources and the shorelines are virtually inaccessible except by foot traffic, landing craft or helicopter, it is best to collect and/or disperse oil offshore, before it reaches inshore areas or the shoreline.

**Hazard and Restrictions:**

A. Unhealthy levels of coliform bacteria have been found intermittently in streams and on beaches in this area. Use appropriate PPE, safety procedures, and include reference to potential health problems in any site safety plan.

B. Safety Considerations- Roads, trails, beach cliffs and hillsides may be unstable in wet weather. Beware of flashfloods in canyons during rainy weather, ticks, poison oak, and rattlesnakes. Beware of trains at unregulated Railroad Crossings. Care must be taken when working on beaches backed by high cliffs. Safe entries to and exits from beaches in this area are related to tides and beach sand levels. Sand surface may be soft. YOU MAY GET STRANDED ON THE BEACH - Plan accordingly.

**Site Strategies:****Site Validation Level: V**

**Strategy: 4-625.1 Objective:** Shoreline Pre-Clean: Resource Specialist Supervision Required

**Strategy:** Consult with resource trustees regarding wildlife issues before undertaking this activity. Hand crews to move and store kelp, driftwood, vegetative debris, trash, and other materials above high-tide line. Dispose of trash. Replace unoiled debris in its former location once the threat of oiling is past.

Table of Response Resources

Equipment	Sub-Type	Size	Unit	QTY	Unit
Vehicle	ATV			1	
Misc.	Trash Bags				
Staff				5	

**Last Page Update**

*Strategy Updated:*

*Last Test: 5/21/2015*

**Logistics:**

**Directions:** From US 101 (west of Santa Barbara) several roads connect to shoreline.

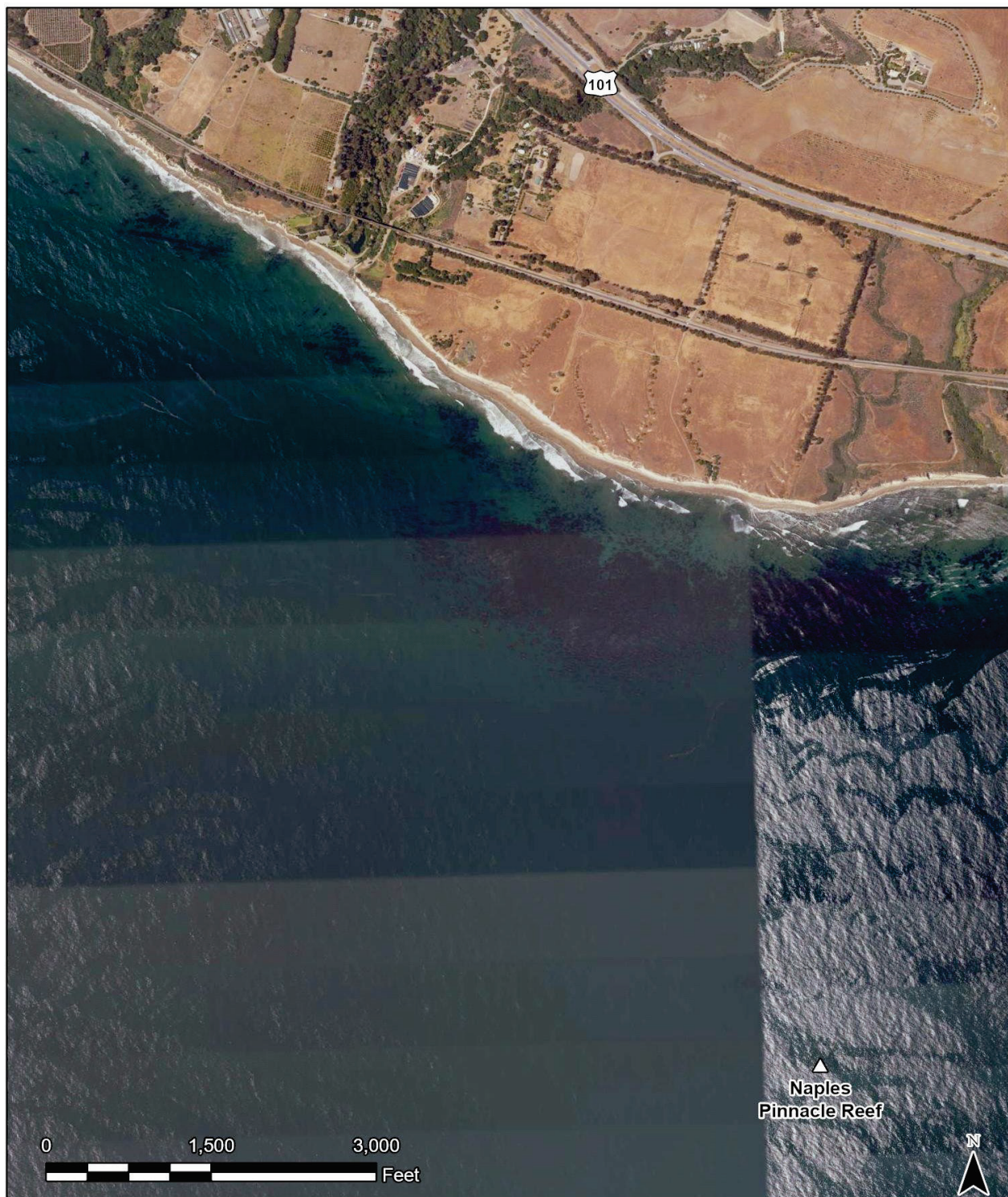
**Land Access:** Access - Shorelines and streams in this site are accessible only through private property. Contact the landowner for permission to enter and information on road conditions.

**On-Water Limitations:** Santa Barbara Harbor is the nearest full service civilian harbor for full-service berthing, launching and fueling.

**Facilities, Staging Areas, Command Posts, Available Equipment:** Parking lot with restrooms at Haskall's beach.

**Communications Problems:** none

**Additional Operational Comments:** Protect the Marine Protected Area (MPA) boundaries.



CDFW - OSPR & USCG Site: 4-625 Name: Naples

A. Caputo (OSPR) & J. Gold (OSPR) Date: 1/4/2024

**No shoreline strategies;  
consider offshore strategies**