

4-445-A Site Summary - Guadalupe Oil Field**4-445-A****County:** San Luis Obispo **ACP Division/Segment:** SL - J - S003**NOAA Chart:** 18700**Map Book:** 774 B-4**Decimal Degrees:** 34.98098 -120.64691**Site Description:**

Fine to medium grained sandy beach just north of the Santa Maria River and just south of the Guadalupe-Nipomo National Wildlife Refuge (site 440). Site of the former Guadalupe Oil Field, owned by Chevron. This is a high energy beach. Species of concern are present year-round. Designated critical habitat for leatherback sea turtles just offshore; beach critical habitat for western snowy plovers and California least terns. Southern sea otters, harbor seals, pacific bottlenose dolphin, and California sea lions can be observed offshore. Dune species of concern California horned lizard, and the silvery legless lizard. Red-legged frogs are found in the wetlands on site. Seabirds and shorebirds include brown pelicans, surf scoters, loons, grebes, willets, sanderlings. Sensitive dune plant species of concern include crisp monardella, beach spectacle pod, dandelion and la graciosa thistle near wetlands.

Resources at Risk:**ESI and Habitat:** 3A Fine- to medium-grained sand beaches**List of Resources at Risk:**

	Resource Name	Status	Presence	Sensitivity
Birds	Western snowy plover	FT, SSC	Year-round	
Birds	California least tern	FE, SE	Apr - Sep	
Mammals	Southern sea otter	FT, SP	Year-round	
Mammals	harbor seal	FP	Year-round	
Mammals	bottlenose dolphin	FP	Year-round	
Mammals	California sea lion	FP	Year-round	
Plants	La Graciosa thistle	FE, ST	Year-round	
Plants	beach spectaclepod	ST	Year-round	
Plants	crisp monardella		Year-round	
Plants	dandelion		Year-round	
Reptiles	California legless lizard	SSC	Year-round	
Reptiles	California horned lizard		Year-round	
Reptiles	leatherback sea turtle	FE	Aug - Nov	

FT-Federally Threatened, FE-Federally Endangered, FP-Federally Protected, SE-State Endangered, ST-State Threatened, SP -State Protected, SR-State Rare, SSC-Species of Special Concern, BGEPA-Bald and Golden Eagle Protection Act, SSSP-State Special Status Species

List of Key Contacts:

Type	Name/Title	Organization	Phone
C	/	Central Coast Information Center	(805) 682-4711
C	/Coordinator	Native American Heritage Commission	(916) 373-3710
E	Bradley Rogers/Project Manager	Chevron	(714) 504-4792
T	Justin Viezbicke/Marine Mammal Stranding	NOAA National Marine Fisheries Service	(562) 506-4315
T	Tina Fahy/Sea Turtle Recovery Coordinator	NOAA National Marine Fisheries Service	(562) 980-4023
T	/Spill Response Coordinator	US Fish and Wildlife Service, Federal T&E Species	(805) 644-1766

C – Cultural, Historic, Archaeological; E – Entry/Owner/Access; O – Other; S – Safety; T – Trustee; X – Exclusion or Security

Additional Site Summary Comments:

Western snowy plovers nest March - September; California least terns nest April - September. Refer to Typical Sandy Beach Site Summary and Strategy pages (Site 4-000-A) for information on response operations when dealing with snowy plovers and least terns. Leatherback sea turtles are most commonly observed August - November. Sea otters pup year-round.

Concerns and Advice to Responders:

Beach is designated snowy plover and least tern critical habitat; refer to Typical Sandy Beach Site Summary and Strategy pages (Site 4-000-A) for information on response operations when dealing with snowy plovers and least terns.

Hazard and Restrictions:

California Department of Fish and Wildlife and USFWS should be consulted before staging motorized equipment and heavy traffic are permitted. Contact for entry via vehicle through oil field, Danielle Wold (805)-858-3028

Site Strategies:**Site Validation Level: II**

Strategy: 4-445.1 **Objective:** No Onsite Options: Consider Offshore Containment/Recovery/ART
Strategy: Offshore containment and recovery (OCR) are the preferred option although heavy surf may hinder these operations. No specific response equipment listed due to the many variables associated with each spill regarding OCR. Early consideration should be given to the use of applied response technologies.
Table of Response Resources

Last Page Update**Logistics:**

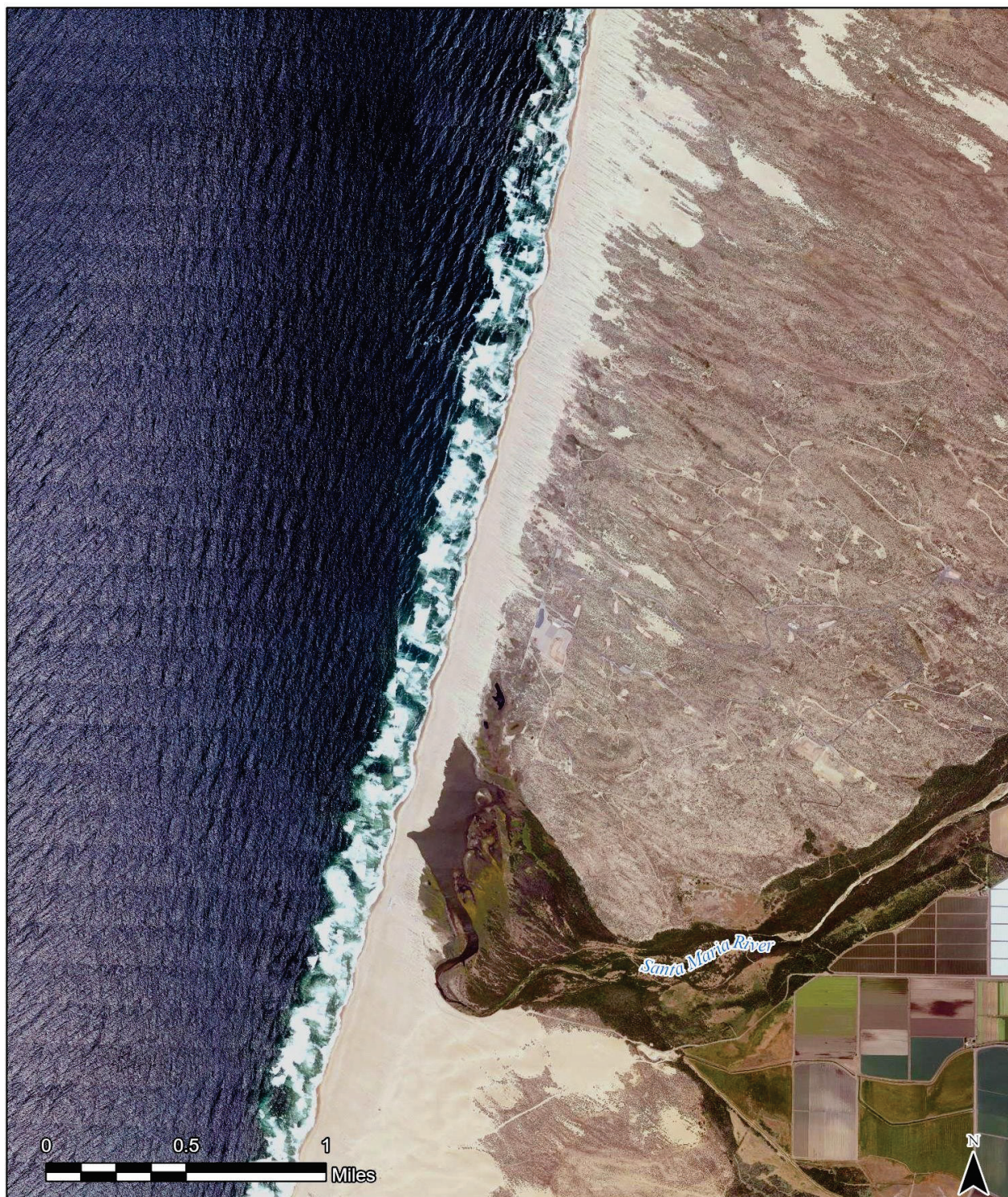
Directions: From the north: Take Hwy 101 S (or Hwy 5 S to Hwy 41 W to Hwy 46 W to Hwy 101 S) to Halcyon Rd. exit in Arroyo Grande and go straight (south) to Hwy 1 (Cienega St. which turns into Mesa View Dr.), turn left (south) on Hwy 1. Continue on Hwy 1 for approx. 8 miles to Thornberry Rd., turn right at the Unocal gate, approx. 1 mile. From the south: Take Hwy 101 N to Hwy 166 W (main St) exit in Santa Maria. Continue on Hwy 166 to Hwy 1 N (Cabrillo Hwy), turn right on Hwy 1. Continue on Hwy 1 to first left past the Santa Maria Bridge, Thornberry Rd. Unocal Gate is approx. 1-mile down Thornberry Rd.

Land Access: ATV or 4-wheel drive possible with access permission from Chevron.

On-Water Limitations: Limitations: Launching, Loading, Docking and Services Available: Port San Luis Harbor is approx. 40 miles north.

Facilities, Staging Areas, Command Posts, Available Equipment: Staging Area: Guadalupe Oil Field. Command Post: Guadalupe Oil Field office; CDFW office in San Luis Obispo. Airports: San Luis Obispo County Airport, approx. 45 min. north. Oceano Airport for small planes, approx. 15 miles north. Santa Maria Airport approx. 15 miles southeast.

Communications Problems: None.



CDFW - OSPR & USCG Site: 4-445 Name: Guadalupe Oil Field

A. Caputo (OSPR) & J. Gold (OSPR) Date: 11/13/2023

**No shoreline strategies;
consider offshore strategies**