

4-410-A Site Summary - Pismo Creek Upstream**4-410-A****County:** San Luis Obispo**ACP Division/Segment:****NOAA Chart:** 18700**Map Book:** 694**Decimal Degrees:** 35.18588 -120.6191**Site Description:**

Pismo Creek upstream. Sentinel Peak Resources oil production and storage facility; crude produced at this facility is 14.6 API. Southern Pacific Railroad track also borders creek. Much of the creek is bordered by private property, agriculture land. Species of concern are present year-round. Creek designated critical habitat for Steelhead and tidewater goby; beach critical habitat for western snowy plovers. Plant species in creek include sycamores, willows, coast live oaks, poison oak, horsetail, duckweed, blackberry. Western pond turtles and red-legged frogs inhabit this creek.

Sentinel Peak oil pipeline crosses Pismo Creek approx. 3.5 miles upstream from the creek mouth. Sentinel Peak has NPDES permit associated with water reclamation project and has ability to reduce or increase flow into creek. Sentinel Peak also has oil spill response equipment at their facility

Resources at Risk:

ESI and Habitat: 9B Vegetated low banks

List of Resources at Risk:

	Resource Name	Status	Presence	Sensitivity
Amphibians	California red-legged frog	FT, SSC	Year-round	
Fish	steelhead - Central/Northern California	FT	Year-round	
Fish	tidewater goby	FE, SSC	Year-round	
Reptiles	Western pond turtle	SSC	Year-round	

FT-Federally Threatened, FE-Federally Endangered, FP-Federally Protected, SE-State Endangered, ST-State Threatened, SP -State Protected, SR-State Rare, SSC-Species of Special Concern, BGEPA-Bald and Golden Eagle Protection Act, SSSP-State Special Status Species

List of Key Contacts:

Type	Name/Title	Organization	Phone
C	/	Central Coast Information Center	(805) 682-4711
C	/Coordinator	Native American Heritage Commission	(916) 373-3710
E	Johnny Simpson/Safety Supervisor	Sentinel Peak Resources	(661) 316-7387
T	Kyle Evans/Steelhead	California Department of Fish & Wildlife	(805) 794-9547
T	SURCOM (24-hr)/	California State Parks (Dispatch)	(951) 443-2969
T	/Spill Response Coordinator	US Fish and Wildlife Service, Federal T&E Species	(805) 644-1766

C – Cultural, Historic, Archaeological; E – Entry/Owner/Access; O – Other; S – Safety; T – Trustee; X – Exclusion or Security

Additional Site Summary Comments:

Steelhead peak spawning March - July; California red-legged frogs breed November - March; tidewater goby peak nest April - July; western pond turtles breed May - August; western snowy plovers and least terns nest March - September on beach; refer to Typical Sandy Beach Site Summary and Strategy pages (Site 4-000-A) for information on response operations when dealing with snowy plovers and least terns.

Concerns and Advice to Responders:

Minimize disturbance in riparian/wetland areas when possible. When crews must walk in soft bottom wetland/riparian areas, restrict the number and size of pathways and avoid trampling oil into sediments. If creek conditions allow, boom/fencing deployment and recovery to be done by only having one person slowly walk across creek to position the boom/fencing to reduce disturbance. Avoid disturbing bottom lagoon sediments to protect tidewater gobies (endangered) especially April-July, goby nesting season. Equipment and foot traffic entering wetted areas should be avoided to the maximum extent practical to prevent crushing tidewater gobies, their burrows, and eggs. If supplemental water is used to flush recommend gradually increasing the intensity/volume during the flush for gobies. Steelhead (critical habitat upstream) peak spawning March - July.

Sentinel Peak Resources has spill response equipment at their facility; and they have a NPDES permit associated with water reclamation project and have ability to reduce or increase flow into creek.

ACCESS LOCATIONS FOR STRATEGY IMPLEMENTATION:

- 1) NE side of oil field entrance at Hyla Creek/Pismo Creek crossing (35.185022, -120.617373); also slide gate location (Strategy .2); vacuum truck access
- 2) 1056 ft. south of Ormonde Rd, (Avila Ranch, private property), vacuumed truck access. Access to west side of creek N35.17488, W120.62249 and access site east side of creek N35.17364, W120.62129; to access eastside of creek turn onto Ormonde Rd. drive 600' to dirt road which parallels RR track; Sentinel Peak has key to gate.
- 3) Bello Street, at railroad bridge crossing (35.142826, -120.633130)
- 4) Dolliver St. Bridge at estuary (35.136820, -120.638763); this access site requires 300' of boom to cross creek; and to line riprap on both sides of bridge abutment will require an additional 1500 feet of boom; vacuum truck access

Hazard and Restrictions:

Poison oak.

Site Strategies:

Site Validation Level: III

Strategy: 4-410.1 Objective: Deploy Containment Boom

Strategy: Boom creek with swamp boom at appropriate angle for swift currents. Foot access for boom deployment. Length of boom needed is dependent on creek width which varies; most access locations would only require approximately 100 feet of boom; but access location #4, Dolliver St. Bridge, 300 feet of boom required. At access location #4 consider lining rip rap on both sides of bridge abutment in estuary with boom; this will require an additional 1500 feet of containment boom. See access locations under Concerns and Advice to Responders section. Consider placing secondary containment just downstream from primary boom using sorbent boom or pom poms.

Table of Response Resources

Equipment	Sub-Type	Size	Unit	QTY	Unit
Boom	Swamp			300	feet
skimmer				1	
Misc.	Stakes			10	
Vac truck				1	
Staff				4	
Misc.	Stake Driver			1	

Last Page Update

Strategy Updated:

Last Test: 5/30/2012

Strategy: 4-410.2 Objective: Other: See Strategy Box

Strategy: Slide gate strategy: Strategy for spill from northeast side of oil field, at Hyla Creek/Pismo Creek crossing (within Sentinel Peak oil field property). Existing bridge crossing has slide gates and boards to block existing culverts. Leave openings at bottoms of culverts to allow water to flow through bottom but allow slide gate to contain oil. Vacuum truck access to bridge. See Concerns and Advice to Responders section for access locations.

Table of Response Resources

Equipment	Sub-Type	Size	Unit	QTY	Unit	Last Page Update
Vac Truck				1		
Staff				4		

Strategy: 4-410.3 Objective: Erect Filter Fence

Strategy: Use a filter fence barrier for exclusion/containment at creek access locations 1, 2, 3 (refer to Concerns and Advice to Responders section for access locations). Use this method when the cross-section of the watercourse does not exceed 30 feet in width, water flow volume is low, the channel bottom is capable of receiving and holding metal stakes, and the spill consists of heavy oil. If creek conditions allow, filter fence deployment and recovery to be done by only having one person slowly walk across the creek to position fencing (and fence posts) to reduce disturbance. Maintenance/monitoring of filter fencing necessary.

Table of Response Resources

Equipment	Sub-Type	Size	Unit	QTY	Unit	Last Page Update
Fence	Construction Fencing			100	feet	
Misc.	Oil Snare (pom-pom)			1		
Misc.	Stakes			10		
Misc.	Stake Driver			1		
skimmer				1		
Staff				4		

Logistics:

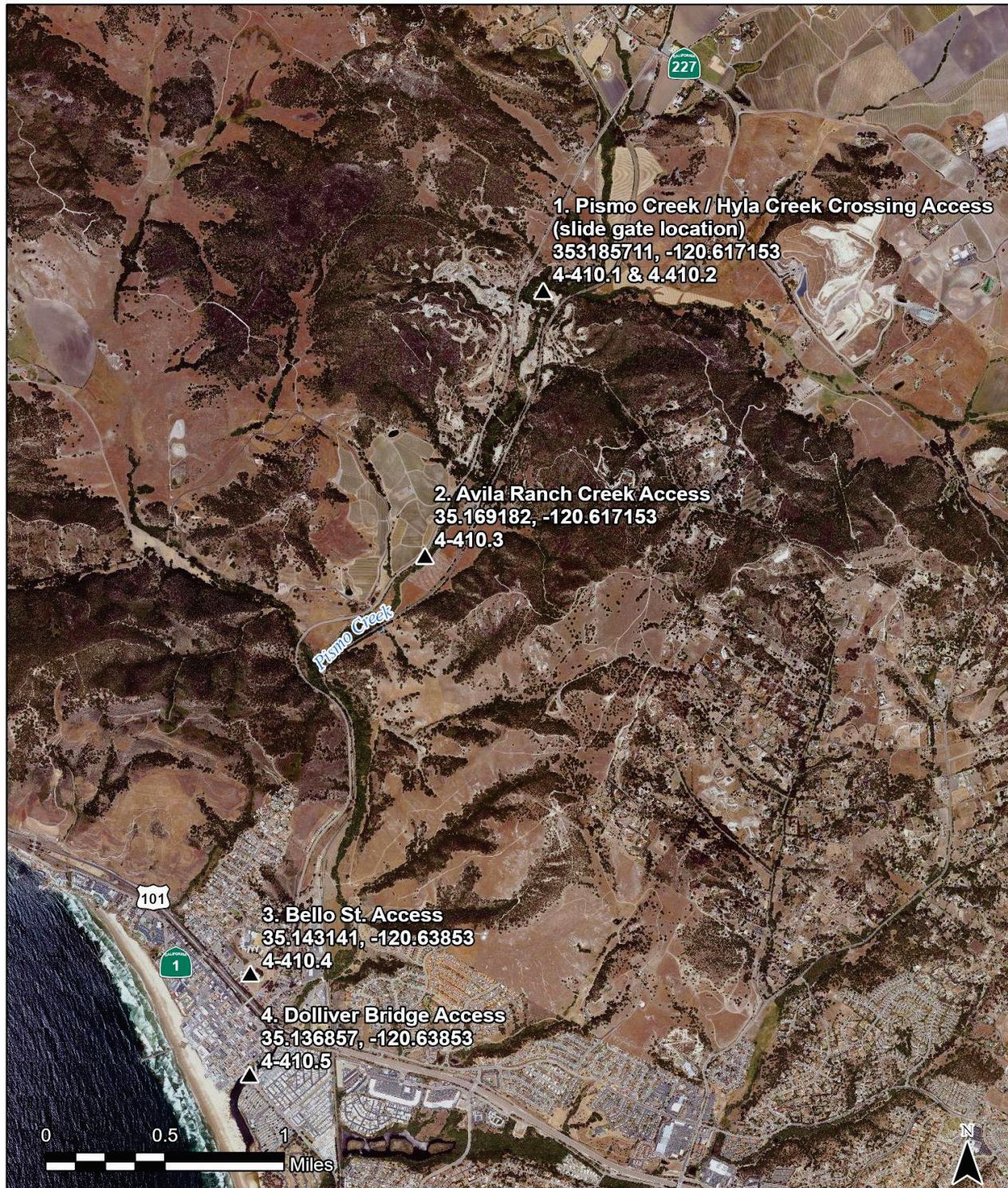
Directions: From the south: Take Hwy 101N to Pismo Beach/ Price Street exit; right (east) onto Price Canyon Rd (PCR), to the west is Hinds Ave). Continue east on PCR approx. 4 miles to Sentinel Peak Resources facility. From the north: Take Hwy 101 S (or Hwy 5 S to Hwy 41 W to Hwy 46 W to Hwy 101 S) to HWY 1/Dolliver St./Price St. (exit 191A); straight on Price St; left (east) at PCR/ Hinds Ave. intersection. Continue east on PCR approx. 4 miles to Sentinel Peak Resources facility.

Land Access: Vehicle/heavy equipment limited in upper regions of creek.

On-Water Limitations: None.

Facilities, Staging Areas, Command Posts, Available Equipment: Staging Area: Sentinel Peak Resources Oil & Gas production/storage facility located at 1821 Price canyon Road, Arroyo Grande. Command Post: Sentinel Peak Resources Oil & Gas oil field office located at 1821 Price canyon Road, Arroyo Grande. Airports: SLO County Airport approx. 15 miles north.

Communications Problems: None.



CDFW - OSPR & USCG Site: 4-410 Name: Pismo Creek Upstream

A. Caputo (OSPR) & J. Gold (OSPR) Date: 1/8/2024

▲ Pismo Creek Access Locations