

4-325-B Site Summary - Deer Canyon Rocky Intertidal**4-325-B****County:** San Luis Obispo **ACP Division/Segment:** SL - H - S001**NOAA Chart:** 18704**Map Book:** 345 A-4**Decimal Degrees:** 35.18918 -120.81241**Site Description:**

Restricted shoreline access through PG&E Diablo Canyon Nuclear Power Plant. Site is within Point Buchon State Marine Conservation Area and Marine Reserve MPA, fisheries management areas that extend 3 miles offshore, and is governed by special protections established by the CDFW Marine Region. Off-shore rocks are part of the Coastal National Monument under BLM jurisdiction. Species of concern are present year-round. Designated critical habitat for leatherback sea turtles and black abalone. This is a haul out area for large numbers of harbor seals. 1,000 animals have been observed here. Sea otters common offshore.

Resources at Risk:**ESI and Habitat:** 5 Mixed sand and gravel beaches

2A Exposed wave-cut platforms in bedrock, mud, or clay

List of Resources at Risk:

	Resource Name	Status	Presence	Sensitivity
Mammals	harbor seal	FP	Year-round	
Mammals	Southern sea otter	FT, SP	Year-round	
Reptiles	leatherback sea turtle	FE	Aug - Nov	

FT-Federally Threatened, FE-Federally Endangered, FP-Federally Protected, SE-State Endangered, ST-State Threatened, SP -State Protected, SR-State Rare, SSC-Species of Special Concern, BGEPA-Bald and Golden Eagle Protection Act, SSSP-State Special Status Species

List of Key Contacts:

Type	Name/Title	Organization	Phone
C	/	Central Coast Information Center	(805) 682-4711
C	/Coordinator	Native American Heritage Commission	(916) 373-3710
E	John Hodge/Associate Field Manager	Bureau of Land Management, Coastal Natl. Monu	(661) 301-1659
O	/24hr	Point San Luis Harbor	(805) 595-5435
T	Leisyka Parrott/CCNM Manager	Bureau of Land Management	(707) 513-3891
T	Steve Wertz/Senior Env. Scientist Supervisor	California Department of Fish and Wildlife, MPAs	(562) 343-3808
T	Justin Viezicke/Marine Mammal Stranding	NOAA National Marine Fisheries Service	(562) 506-4315
T	Melissa Neuman/Marine Biologist	NOAA National Marine Fisheries Service	(562) 481-4594
T	Tina Fahy/Sea Turtle Recovery Coordinator	NOAA National Marine Fisheries Service	(562) 980-4023
T	/Spill Response Coordinator	US Fish and Wildlife Service, Federal T&E Species	(805) 644-1766

C – Cultural, Historic, Archaeological; E – Entry/Owner/Access; O – Other; S – Safety; T – Trustee; X – Exclusion or Security

Additional Site Summary Comments:

Harbor seals pup March - June; southern sea otters pup year-round; leatherback sea turtles most commonly observed August - November.

Concerns and Advice to Responders:

Black abalone (endangered) may be present on nearby rocky intertidal habitat (designated critical habitat). Harbor Seal pupping March- June, sea otters pup year-round. Leatherback sea turtles designated Critical Habitat extends from shore out to 100 miles offshore; most commonly observed Aug - Nov. Site within Point Buchon State Marine Conservation Area and Marine Reserve MPA, fisheries management areas that extend 3 miles offshore.

Hazard and Restrictions:

Restricted shoreline access through PG&E Diablo Canyon Nuclear Power Plant. 24-hour number (805) 545-3377.

Site Strategies:**Site Validation Level: II****Strategy: 4-325. Objective:***Strategy:*

Table of Response Resources

Last Page Update**Strategy: 4-325.1 Objective:** No Onsite Options: Consider Offshore Containment/Recovery/ART

Strategy: Offshore containment and recovery (OCR) are the preferred option although heavy surf may hinder these operations. No specific response equipment listed due to the many variables associated with each spill regarding OCR. Early consideration should be given to the use of applied response technologies.

Table of Response Resources

Last Page Update**Logistics:**

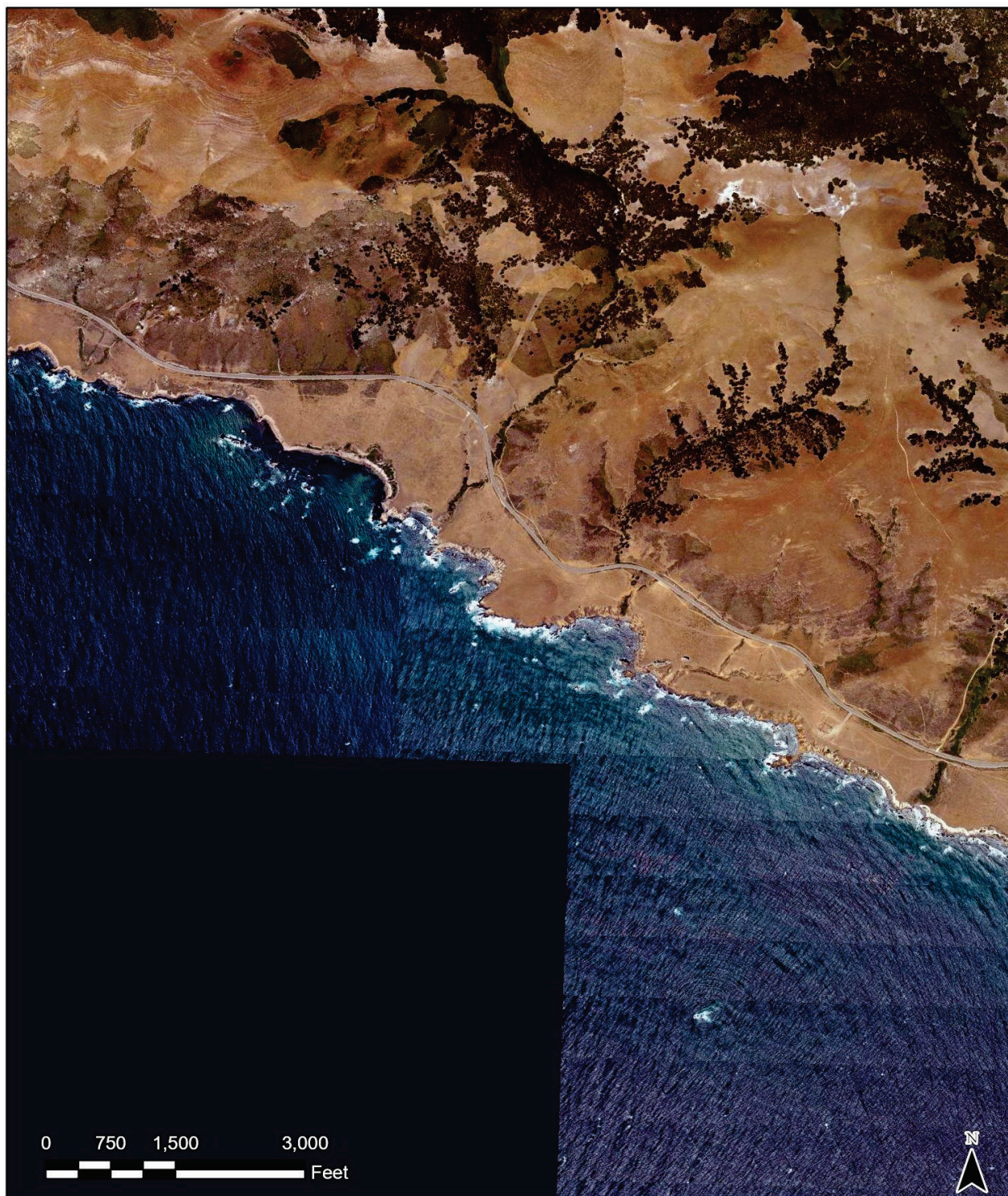
Directions: From the south: Hwy 101 N to the Avila Beach Dr. exit. Take Avila Beach Dr. almost to the end to Diablo Canyon Rd, power plant entrance, and check in with security check point. After approx. 7 miles, you'll approach the power plant. From the north: Take Hwy 101 (or 5 S to Hwy 46 W to Hwy 41 W to Hwy 101 S) to Avila Beach exit, San Luis Bay Dr. Take San Luis Bay Dr. to stop sign, turn right on Avila Beach Dr. Follow directions from above.

Land Access: Foot access only, Rattlesnake Creek has dirt road with beach access.

On-Water Limitations: Limitations: Launching, Loading, Docking and Services Available: Port San Luis. PG&E Diablo Canyon has a small boat launching facility.

Facilities, Staging Areas, Command Posts, Available Equipment: Staging Area: Diablo Canyon Nuclear Power Plant. Port San Luis Harbor District Parking lot. Command Post: Port San Luis Harbor District. CDFW office in San Luis Obispo. Airports: SLO County Airport is approx. 20 min.

Communications Problems: None.



CDFW - OSPR & USCG Site: 4-325 Name: Deer Canyon Rocky Intertidal

A. Caputo (OSPR) & J. Gold (OSPR) Date: 11/6/2023

**No shoreline strategies;
consider offshore strategies**