

2-970 -A Site Summary- Middle River: Upper Jones Tract

2-970 -A

County: **San Joaquin**

Thomas Guide Location

Latitude N
3 7 54

Longitude W
121 30

USGS Quad: **Holt & Woodward Island**

NOAA Chart: **18661 Sacramento & San Joaquin River**

Last Page Update : 7/1/2017

SITE DESCRIPTION:

This site is the reach from SP railroad crossing on the north to the Highway 4 bridge on the south. A large river reach with several in-channel tule marsh islands. Bordering island levees are ripped with emergent marsh along the levee margins.

SEASONAL and SPECIAL RESOURCE CONCERNS

"A" priority for protection all year.

RESOURCES OF PRIMARY CONCERN

This site has large in-channel tule marsh, islands, and associated wildlife.

The following species are found here: Swainson's hawk (ST), California clapper rail (CE/FE), herons egrets, waterfowl, marsh birds, songbirds

River otter, beaver

Winter-run Chinook salmon (CE/FE) adults in winter, smolts in spring and summer.

CULTURAL, HISTORIC, and ARCHEOLOGICAL SENSITIVITIES

Contact the California Dept of Parks and Recreation - Office of Historic Preservation (Eric Allison (916) 653-9125), and the Northwest Information Center, (Bryan Much, Sonoma State College (707) 332-1117) for specific information on historic or cultural resources in this area.

KEY CONTACTS: Trustee (T); Entry/Owner/Access (E); Cultural (C); or Other Assistance (O)

Type	Name / Title	Organization	Phone
------	--------------	--------------	-------

ADDITIONAL SITE SUMMARY COMMENTS:

2-970 -A Site Strategy - Middle River: Upper Jones Tract

County and Thomas Guide Location

San Joaquin

NOAA CHART

18661 Sacramento & San Joaquin River

2-970 -A

Latitude N

Longitude W

3 7 54

121 30

Last Page Update : 7/1/2017

CONCERNS and ADVICE to RESPONDERS:

The concern is two-fold: first, that oil will be transported though this site to other parts of the delta; and second, that marshy islands and margins will become oiled. These marshy areas are sensitive and habitat to many sensitive species. There is always the concern of impacts from response and cleanup: trampling vegetation, disturbing wildlife, and tracking oil into marshes and mudflats

HAZARDS and RESTRICTIONS:

The low clearance of the bridge is a restriction to boat travel.

SITE STRATEGIES

Strategy 2-970.1 Objective: North End: prevent oil from contaminating in-channel marshes

a) For oil from the north; deploy 1000 ft of 9X9 Hboom near the UP railroad cut. Deflect oil away from islands towards levees for shore-based skimming and recovery.

b) Boom off entrances (2) to ski areas inside larger tule-island (200 ft each). Fall back position is up river towards Woodward Island Ferry.

c) Place 800 ft 9X9 Hboom in front of islands or outline with curtain or sorbent boom.

Use 50ft of Oil Snare (OS), 100ft of sorbent boom to collect oil that may accumulate. Contact IC if oil accumulates in skimmable quantities.

Strategy 2-970.2 Objective: South End: Prevent oil from contaminating in-channel marches.

For oil coming down Middle river; deploy two legs of 600' 9X9 Hboom across channel north of Trapper Slough confluence. Overlapping boom legs allow vessel traffic to pass. Deflect to east side levee for collection. Collect accumulated oil with absorbents and/or vacc truck. Use 50ft of Oil Snare (OS), 100ft of sorbent boom to collect oil that may accumulate.

Strategy 2-970.3 Objective: Oil Recovery by Shoreside skimming

Deploy skimmers when oil accumulates in skimmable quantities. Consult with IC prior to the initiation of this strategy.

Table of Response Resources

strategy number	harbor boom	swamp boom	Other boom type	sorb boom	Anchoring		Boom boat	Skiffs punts	Skimmers		Special Equipment or comment		staff deploy	Staff tend
					no	type and gear			No	Type	No	and kinds		
2-970.1	2200		50 OS	100	12	12-18 / 25lb Danforth	1	1					5	
2-970.2	1200		50 OS	100	5	12-18 / 25lb Danforth	1	1			vacc truck		5	
2-970.3	0	0	0	0	0		0	0	3	SSS	0			

LOGISTICS

DIRECTIONS: to site (by land and/or by water, to nearest launch ramp and are access permits required.)

Key access is from Highway 4 east to Union Pacific at Middle River. Turn left on levee road across Trapper Slough to Bacon Island Road. This site is the reach from SP railroad crossing on the north to the Highway 4 bridge on the south.

LAND ACCESS: all types on paved levee roads

WATER LOGISTICS: SHALLOW WATER NEAR ISLANDS

Limitations: depth, obstruction

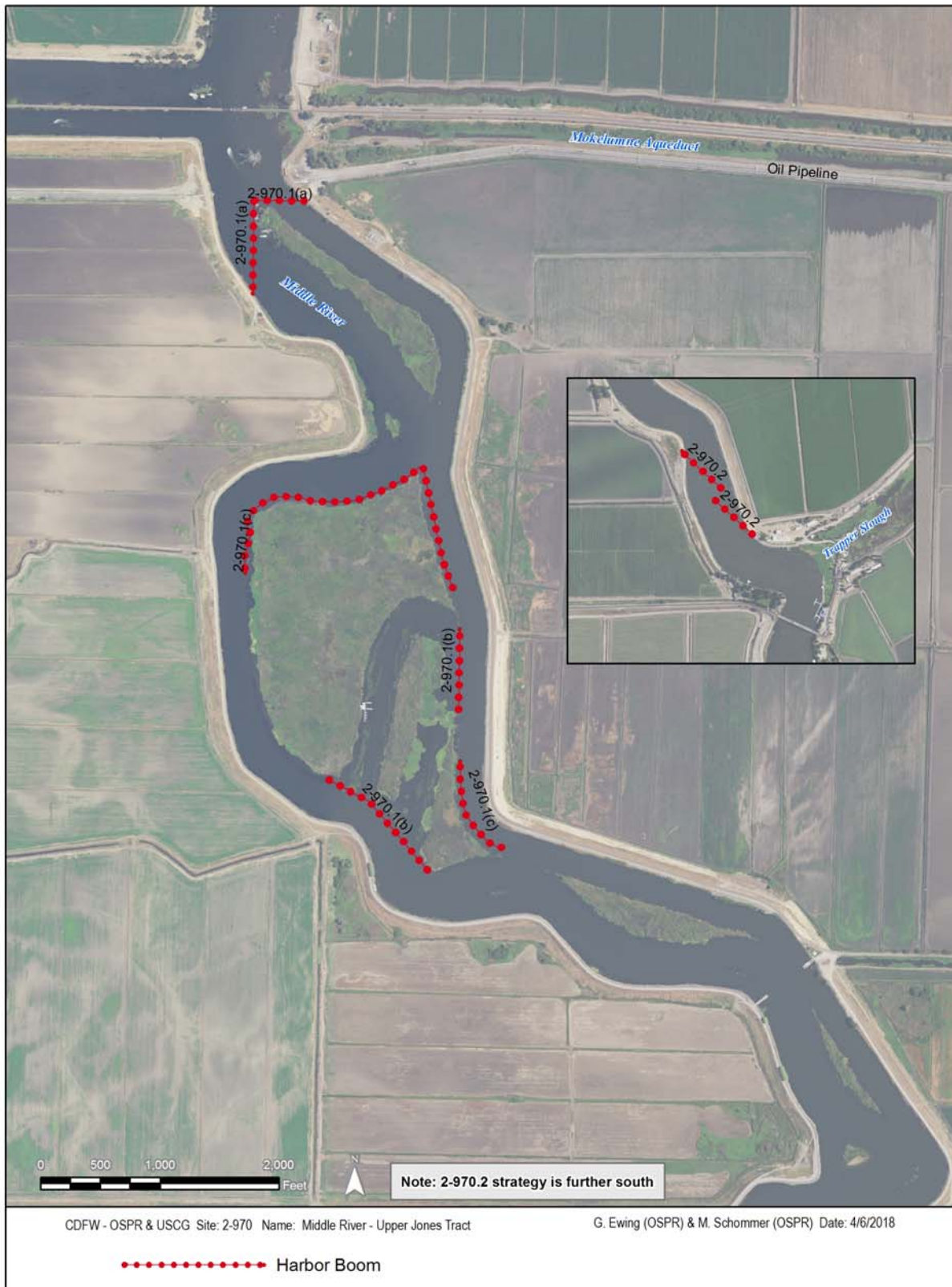
Launching, Loading, Docking Launch skiffs from levee, larger vessels launch from Discovery Bay.
and Services Available:

FACILITIES, STAGING AREAS, POSSIBLE FIELD POSTS AND EQUIPMENT AVAILABLE:

Staging at Union Point or along levees.

COMMUNICATIONS PROBLEMS:

ADDITIONAL OPERATIONAL COMMENTS:



Imagery: NAIP 2016, 60 cm resolution

Harbor / Curtain Boom	Sorbent boom	SSS - Shoreside Skimming System
Swamp / River Boom	Berm, Dam, or Dike	SFS - Stationary Floating Skimmer
all other boom types	Filter fence	SPS - Self Propelled Skimmer
Boom tow	Skimmer	TSA - Towed Skimming Array