

County: San Joaquin

Thomas Guide Location

Latitude N

Longitude W

USGS Quad: Clifton Court Forebay & Holt

3 7 52

121 32

NOAA Chart: 18661 Sacramento & San Joaquin River

Last Page Update : 7/1/1996

SITE DESCRIPTION:

A straight canal located between Victoria and Union Islands, this connects Old River on the west to Middle River on the east. Sensitive resources in the site include tule marshes and berm island down the middle. Bounded on both sides by rip-rap lined levees.

SEASONAL and SPECIAL RESOURCE CONCERN

"A" priority for protection all year for the freshwater marsh and associated special status species.

RESOURCES OF PRIMARY CONCERN

Tule marsh and berm islands along center of canal. A small riparian forest exists on a mid-channel island at the east end of the canal.

Swainson's hawk (ST), waterfowl, egrets, herons,

River otters and beaver.

Winter-run Chinook salmon (SE/FE) are present all year as adults (winter) and smolts (spring and summer).

Delta tule pea, delta button celery, tules and phragmites

Mason's Lilaeopsis (SR), California hibiscus,

CULTURAL, HISTORIC, and ARCHEOLOGICAL SENSITIVITIES

Contact the California Dept of Parks and Recreation - Office of Historic Preservation (Eric Allison (916) 653-9125), and the Northwest Information Center, (Bryan Much, Sonoma State College (707) 332-1117) for specific information on historic or cultural resources in this area.

KEY CONTACTS: Trustee (T); Entry/Owner/Access (E); Cultural (C); or Other Assistance (O)

Type	Name / Title	Organization	Phone
	John Henderson F/W Biologist	US Fish & Wildlife Service, Environmental Contam	(916) 414-6595
	Eric Larson	CA Dept. of Fish & Wildlife, Bay/Delta	(707) 944-5528
	Dab Nomellini President	Central Delta Water Agency	(209) 465-5883

ADDITIONAL SITE SUMMARY COMMENTS:

2-929 -A Site Strategy - Victoria Canal

County and Thomas Guide Location

San Joaquin

NOAA CHART

18661 Sacramento & San Joaquin River

2-929 -A

Latitude N

3 7 52

Longitude W

121 32

CONCERNS and ADVICE to RESPONDERS:

Last Page Update : 7/1/2005

There are many important ecological resources in this reach of river and upstream sites where oil may be carried on tides and currents. The intent is to limit the free movement of oil into and through this site by exclusion and collection booming. Oil issues within the site are oiling of marshy vegetation and penetration into riprap. Minimize disturbance of vegetation and wildlife. Do not tie boom to trees on the levee.

HAZARDS and RESTRICTIONS:

Vessels be aware of shallow water near middle on canal. Aircraft beware of powerlines at west end.

SITE STRATEGIES

Strategy 2-929.1 Objective: West end of canal: Keep oil out of marsh areas located in middle of canal.

For oil coming from northern reaches of Old River, deploy strategy as described for Widdows and Eucalyptus Islands

(2-927-A) and Old River: Coney Island (2-925-A). Oil may be deflected to levees of Victoria Canal. For resources necessary see the above mentioned strategy.

Strategy 2-929.2 Objective: Exclude oil and stop spread when oil threatens from east end of canal.

For oil coming from Highway 4 or Middle River, deploy 18" harbor boom to deflect oil to either levee in J-hook configuration. Angle boom to fit the best current and wind conditions and shoreside recovery needs. Recover oil with 50ft Oil Snare (OS), 100ft sorbent boom from levees of Union Island or Victoria Island. Contact IC if oil accumulates in skimmable quantities.

Strategy 2-929.3 Objective: Exclude oil from entering Clifton Court Forebay.

Notify facility of oil spill and instruct to shut down pumps to stop or decrease the flow of water and oil through the canal.

Strategy 2-929.4 Objective: Oil Recovery by Shoreside skimming

Recover oil with skimmers from levees of Union Island or Victoria Island if oil accumulates in skimmable quantities. Consult with IC prior to the initiation of this strategy.

Table of Response Resources

strategy number	harbor boom	swamp boom	Other boom type	sorb boom	Anchoring no	type and gear	Boom boat	Skiffs punts	Skimmers No	Type	Special Equipment or comment and kinds	staff deploy	Staff tend
2-929.1	0	0	0	0	0	0	0	0	0		See SF-925-A and SF-927-A strategies.		
2-929.2	800		50 OS	100			1	0				5	
2-929.3	0	0	0	0	0	0	0	0	0		See SF-925.03-A		
2-929.4	0	0	0	0	0		0	0	1	SSS	0		

LOGISTICS

DIRECTIONS: to site (by land and/or by water, to nearest launch ramp and are access permits required.)

Access is from Highway 4 east to Union Point at confluence with Middle River and Victoria Canal. A straight canal located between Victoria and Union Islands, this connects Old River on the west to Middle River on the east.

LAND ACCESS: 2WD, LG TRUCK, HVY EQ, 4WD, ATV, FOOT

WATER LOGISTICS: SHALLOW WATER, POWERLINES

Limitations: depth, obstruction

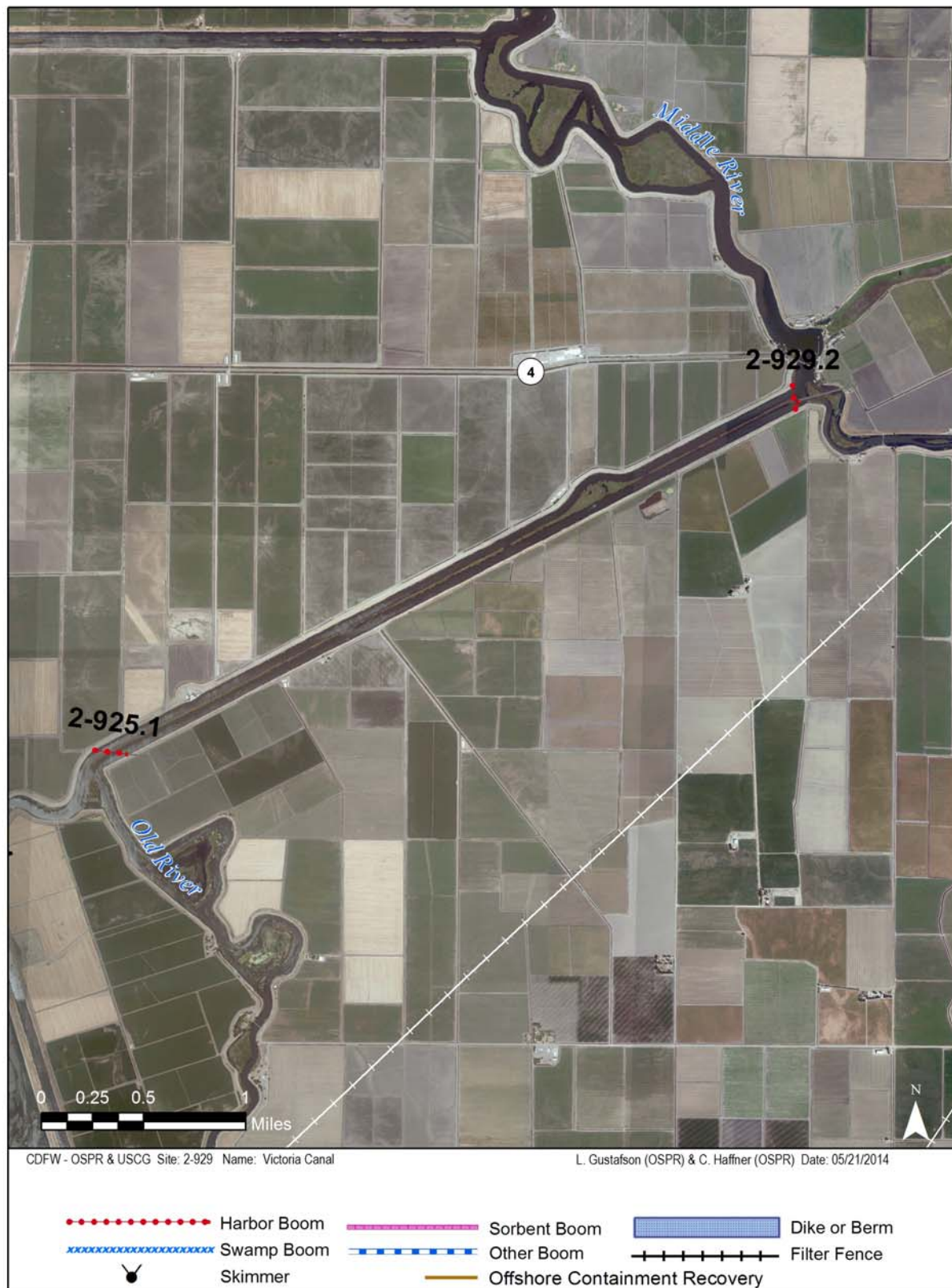
Launching, Loading, Docking and Services Available: Larger boats launch from Discovery Bay. Skiffs from levees.

FACILITIES, STAGING AREAS, POSSIBLE FIELD POSTS AND EQUIPMENT AVAILABLE:

Staging and boat mooring at Union Point.

COMMUNICATIONS PROBLEMS:

ADDITIONAL OPERATIONAL COMMENTS:



Imagery: NAIP 2010 (Summer) 4-Band