

County: **Contra Costa**
USGS Quad: **Antioch North**

Thomas Guide Location

Latitude N

Longitude W

3 8 01

121 46

NOAA Chart: **18661 Sacramento / San Joaquin River**

Last Page Update : 7/1/2005

SITE DESCRIPTION:

The waterfront exposure of this site is from the Fiberboard factory east to the PG&E plant and includes a revegetated remnant of the Antioch Dunes which was a sand quarry and is now part of the Antioch Dunes National Wildlife Refuge. The site is notable for its remnant dunes which, though degraded, support a unique dune ecosystem. The dunes were an extensive historic habitat throughout this portion of Contra Costa County from Antioch to Oakley. The dunes had a characteristic flora and fauna some of which were unique to this habitat. Now only these two sites, 718 and 719, remain: marshes, riverine dunes, and former dunes along the south bank of the San Joaquin River. Although this dunes habitat is high in elevation and, consequently, not very vulnerable to oiling the sensitive dune ecosystem, there is danger of encroachment and disturbance during response. The waterfront margin is sandy beach which rises steeply and has a narrow emergent marsh at the shoreline.

SEASONAL and SPECIAL RESOURCE CONCERN

The site is an "A" priority year-round. Several Special Status Species occur here. No one may enter this area without accompaniment of USFWS representative.

RESOURCES OF PRIMARY CONCERN

The site is notable for its remnant dunes which supports a unique dune ecosystem with its characteristic flora and fauna, some of which were unique to this habitat. The waterfront margin is sandy beach and emergent marsh. Although this dune habitat is high in elevation and, consequently, not very vulnerable to oiling, there is danger of encroachment and disturbance during response to the shoreline oiling.

The rare flora supports a community of rare insect life (12 rare species) and one endangered butterfly: Lang's Metalmark. Silvery Legless Lizard also resides here.

A number of rare plant occur here including Antioch dunes evening primrose, Mason's lileopsis, Contra Costa wallflower, Suisun aster, Delta tule pea, Contra Costa goldfields, diamond petalled California poppy.

CULTURAL, HISTORIC, and ARCHEOLOGICAL SENSITIVITIES

Contact the California Dept of Parks and Recreation - Office of Historic Preservation (Eric Allison (916) 653-9125), and the Northwest Information Center, (Bryan Much, Sonoma State College (707) 332-1117) for specific information on historic or cultural resources in this area.

KEY CONTACTS: Trustee (T); Entry/Owner/Access (E); Cultural (C); or Other Assistance (O)

Type	Name / Title	Organization	Phone
TBE	E. Fernandez	US Fish Wildlife Service	(510) 792-0222
	John Henderson F/W Biologist	US Fish & Wildlife Service, Environmental Contam	(916) 414-6595
	Eric Larson	CA Dept. of Fish & Wildlife, Bay/Delta	(707) 944-5528

ADDITIONAL SITE SUMMARY COMMENTS:

2-719 -A Site Strategy - Antioch Dunes and Quarry Canyon

County and Thomas Guide Location

Contra Costa

NOAA CHART

18661 Sacramento / San Joaquin River

2-719 -A

Latitude N

3 8 01

Longitude W

121 46

CONCERNS and ADVICE to RESPONDERS:

Last Page Update : 7/1/2005

No one may enter this site without the accompaniment or direction of the US Fish & Wildlife Service Representative in charge of this refuge. The main concern is that response personnel will accidentally damage the endangered plant or animal living in this dune site. If this site is oiled, no entry or cleanup should be attempted without USFWS concurrence. Oil impacts will be limited to a narrow band along the waterfront. Shoreline is steep and easily accessed from water.

HAZARDS and RESTRICTIONS:

Air traffic should be attentive to high power wires and smoke stacks.

SITE STRATEGIES

Strategy 2-719.1 Objective: NEAR SHORE CONTAINMENT AND RECOVERY - Shoreside skimming

Deploy 100 feet of deflection boom extending into the current from the shoreline so as to direct oil onto the shoreline. Back the recovery boom with a half length of swamp boom and sorbent boom to insure recovery. To collect oil that may accumulate, use 50ft of Oil Snare (OS), 100ft of sorbent boom. If oil accumulates in skimmable quantities, activate Shoreside Skimmer.

Table of Response Resources

strategy number	harbor boom	swamp boom	Other boom type	sorb boom	Anchoring no type and gear	Boom boat	Skiffs punts	Skimmers No Type	Special Equipment or comment No and kinds	staff deploy	Staff tend
2-719.1	100	50	50 OS	100		0	1			2	

LOGISTICS

DIRECTIONS: to site (by land and/or by water, to nearest launch ramp and are access permits required.)

From Highway 4 go north on A Street then east on Wilbur Ave. about 2.5 miles. Antioch Sand Dunes National Wildlife Refuge - Quarry Canyon is on the north side between the Fiberboard Plant and the PG&E plant and is posted, fenced and gated. (You can also access Wilber Road from the Antioch Bridge toll plaza area and drive westerly.) When approaching by water use the factories as orientation. The waterfront exposure of this site is from the Fiberboard factory east to the PG&E plant and includes a revegetated remnant of the Antioch Dunes which was a sand quarry and is now part of the Antioch Dunes National Wildlife Refuge.

LAND ACCESS: All types are possible but none are permitted. Nearby is good.

WATER LOGISTICS: good access. Beware of obstructions.

Limitations: depth, obstruction

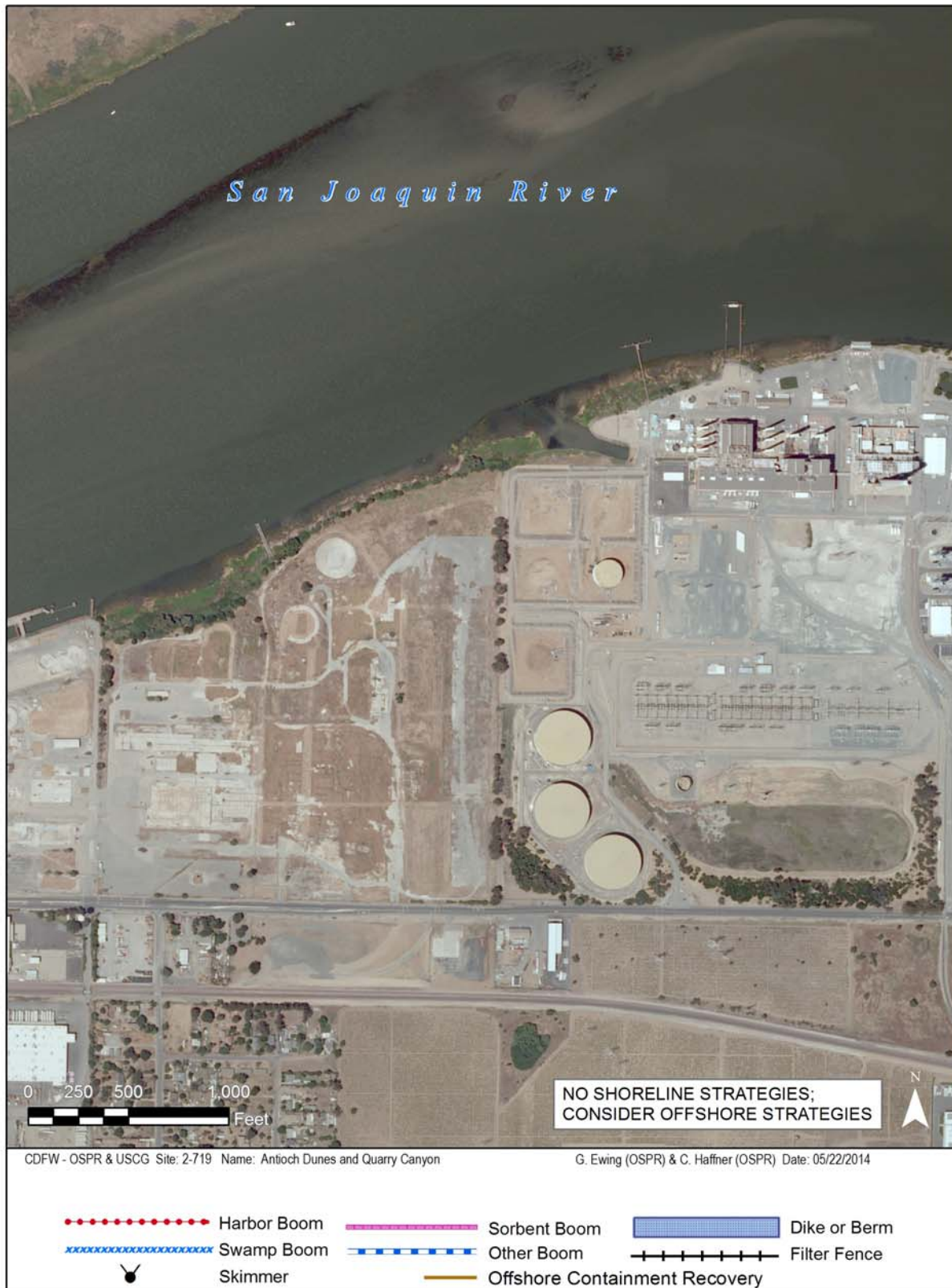
Launching, Loading, Docking and Services Available: Launching at Antioch public launch, Bridge Head Marina, Lawrenson's Marina, Antioch Marina. Full services are at marinas.

FACILITIES, STAGING AREAS, POSSIBLE FIELD POSTS AND EQUIPMENT AVAILABLE:

All access to this site should be from the water only. Boats may be launched at Antioch Marina or Fulton's Shipyard which is the property immediately to the west of Antioch Dunes. Staging for this site may be at marina's or nearby Fulton's Shipyard.

COMMUNICATIONS PROBLEMS: none known

ADDITIONAL OPERATIONAL COMMENTS:



Imagery: NAIP 2010 (Summer) 4-Band