

County: **Contra Costa**  
 USGS Quad: **Richmond**

Thomas Guide Location

AAA Richmond

NOAA Chart:

**Entrance to San Francisco Bay 18649**

Latitude N

3 7 54

Longitude W

122 21.5'

Last Page Update : 7/1/2017

#### SITE DESCRIPTION:

Brook's Island lies south of the Richmond Channel and at the west side of the Richmond Inner Harbor and includes the spit but not the rocky channel breakwater. It is the property of East Bay Regional Parks District and no trespassing is permitted at any time because of the extreme ecologic sensitivity. This small rocky island, 400 X 1,700 yards, consists of about 160 acres of rocky upland rising to a maximum elevation of 163 ft. Most shorelines of the island are mixed sand and gravel. A 2,300 yard long breakwater is attached to the west end of the island with a shipping channel along its north side. There is a small, 35 acre, seasonal wetland near where the breakwater connects to the island. The wetland is protected on the north by the breakwater and a sandy beach. Sand beaches and dunes have accumulated at several points along the breakwater. To the south the marsh is open to San Francisco Bay. There are tidal flats to the north, east, and south of Brook's Island and the breakwater. Eelgrass beds are present in shallow water ( less than 6 feet below MLLW ) south of the breakwater.

#### SEASONAL and SPECIAL RESOURCE CONCERNS

"A" priority all year. The marsh is sensitive to oiling year round, and the eelgrass beds are most sensitive to oil during the growing season of spring and summer when the leaves lay on the surface, especially at low tide. Site is especially sensitive March through June when multiple ground nesting species are breeding.

#### RESOURCES OF PRIMARY CONCERN

The wetland is sensitive year-around; the eelgrass beds are most sensitive to oil during the growing season of spring and summer when the leaves lay on the surface, especially at low tide. Harbor seals use the island as a haul-out site, and some birds are present throughout the year.

Several species are of special interest; the Snowy Egret, Black-crowned Night Heron, and Caspian Tern inhabit the marsh and waters surrounding the island. Terns and shorebirds nest here in large numbers and use area as a rookery..

Harbor seals haul out on the island.

A rich community of invertebrates inhabit the sand and gravel beaches of the island and the tidal flats.

There is a 35 acre wetland on the island. The eelgrass beds are an extremely valuable habitat for spawning herring in the winter and as a nursery area for fish and invertebrates throughout the summer and fall. The eelgrass beds are an extremely valuable food source for waterfowl in the spring.

#### CULTURAL, HISTORIC, and ARCHEOLOGICAL SENSITIVITIES

There are cultural and historic resources at this site. Contact Rick Parmer (EBRPD) (510) 544-2551 for cultural/historic resources at this site. Also, contact the California Dept of Parks and Recreation -Office of Historic Preservation (Eric Allison -(916) 653-9125), and the Northwest Information Center, (Bryan Much, Sonoma State College ((707) 332-1117)) for specific information on historic or cultural resources in this area.

#### KEY CONTACTS: Trustee (T); Entry/Owner/Access (E); Cultural (C); or Other Assistance (O)

Type	Name / Title	Organization	Phone
E	Brook's Island Caretaker	East Bay Regional Park District	(510) 283-4746
E/T	Brook's Island Shoreline Parks Manager	East Bay Regional Park District	(510) 544-3108
C	Chevron Long Wharf	Chevron Corp., Operations Control Room (24hrs.)	(510) 242-4494
E	EBRPD Dispatch EBRP	East Bay Regional Park District	(510) 881-1833
E/T	Shoreline Park Supervisor	East Bay Regional Park District	(510) 544-3172
L	Mike Williams	Port of Richmond	(510) 778-3325

#### ADDITIONAL SITE SUMMARY COMMENTS:

## 2-453 -A Site Strategy - Brook's Island

County and Thomas Guide Location

AAA Richmond Contra Costa

NOAA CHART

Entrance to San Francisco Bay 18649

## 2-453 -A

Latitude N

Longitude W

3 7 54

122 21.5'

### CONCERNS and ADVICE to RESPONDERS:

Last Page Update : 7/1/2017

This site has heavy bird nesting activity which is concentrated on the spit. No foot traffic is permitted on the Island except with biologist supervising. Even activity nearby can be destructive to nesting success. There are marshy areas at the northwest corner of the island and along north margin of the spit.

### HAZARDS and RESTRICTIONS:

Shallow water, submerged rocks near north tip of island, debris, and pilings may be present throughout area south and east of island and breakwater. No foot traffic on shore without first notifying East Bay Regional Park District.

### SITE STRATEGIES

Waters are shallow on both sides but workable. Response staff should stay off and away from shores except to anchor to shoreline. There are rocks at north tip of Island.

Strategy 2-453.1 Objective: PRIMARY: Exclusion Booming on south side of spit: exclude oil from high marsh and break in spit

On the south of the Brooks Island spit (on west end), deploy 5000 ft of 9X9+ Hboom across the cove from the SSE spit, forming a chevron configuration to the SW corner of the main island to include Bird Rock. Boom should be anchored on shore, but foot traffic must be kept to absolute minimum to avoid disturbing ground nesting birds and marsh life. Apex of configuration should be directly into prevailing wind to reduce entrainment and overtopping. Place anchors at 500' intervals or as necessary.

Strategy 2-453.2 Objective: North shore exclusion for north-side threat to shoreline, jetty breach, marsh entry (Sante Fe Channel and Richmond Channel side & threat sources)

On the north of the Brooks Island spit (on west end), deploy 3200 ft of swamp boom from the rocky point at northeast tip to west of the jetty breach. Probably only minimal mid-boom anchoring will be necessary. For the opening to the interior marsh, a small length of boom may be staked across the shallow entry in a chevron formation.

### Table of Response Resources

strategy number	harbor boom	swamp boom	Other boom type	sorb boom	Anchoring no type and gear	Boom boat	Skiffs punts	Skimmers No Type	Special Equipment or comment No and kinds	staff deploy	Staff tend
2-453.1	5000	0	0	0	12 22#+ danforths	1	1	0	0	4	
2-453.2	0	3200	0	0	8 5/22#+ danforths+ 3 stakes	1	1	0	0	4	

### LOGISTICS

**DIRECTIONS: to site (by land and/or by water, to nearest launch ramp and are access permits required.)**

Access by vessel only. Launch at Richmond Marina. Island is managed by East Bay Regional Park District and all activity on or near the island must be coordinated with them. Brook's Island lies south of the Richmond Channel and at the west side of the Richmond Inner Harbor and includes the spit but not the rocky channel breakwater. It is the property of East Bay Regional Parks District and no trespassing is permitted at any time because of the extreme ecologic sensitivity.

**LAND ACCESS:** none

**WATER LOGISTICS:** Very shallow water

Limitations: depth, obstruction

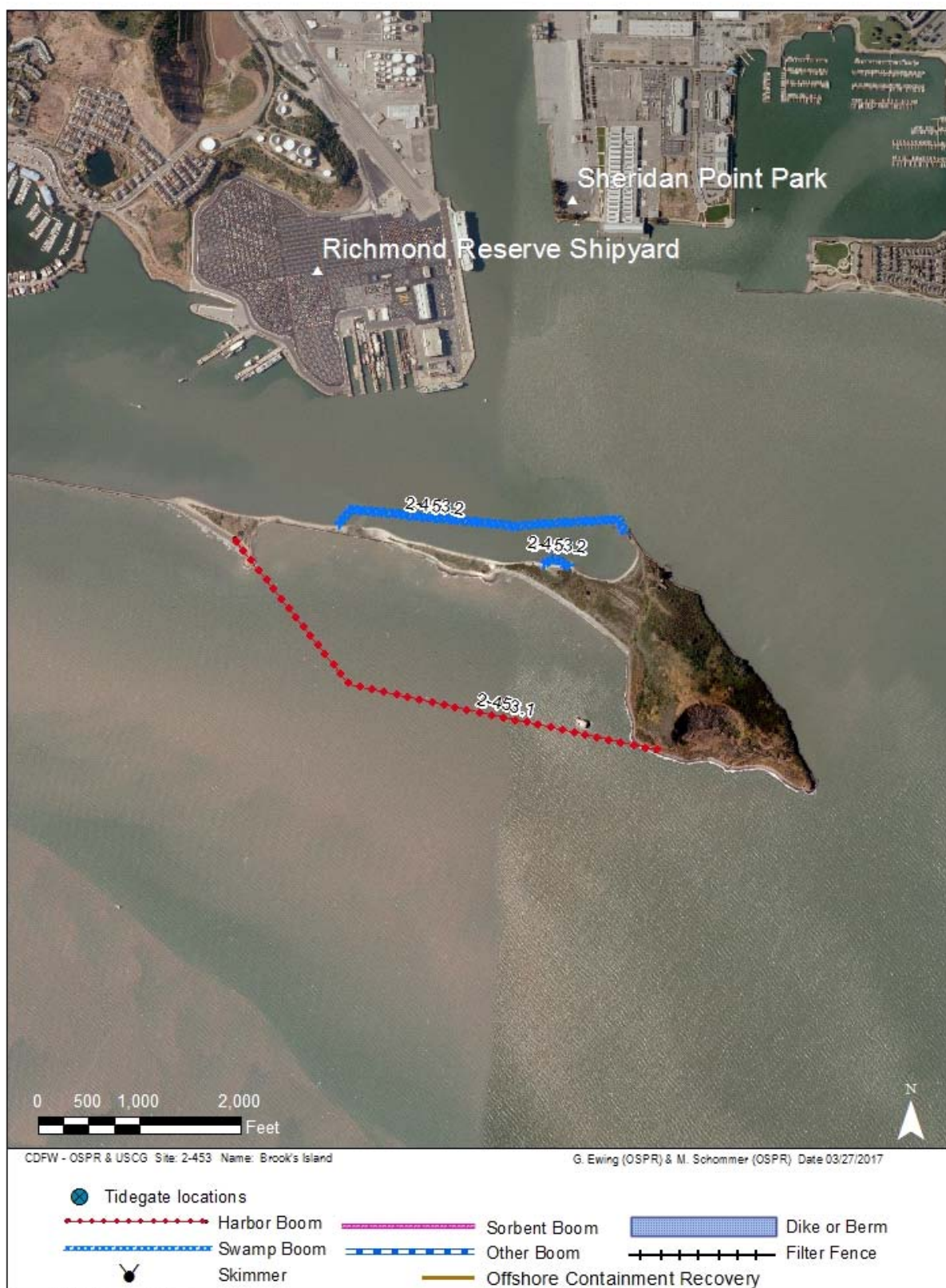
Launching, Loading, Docking Launch ramp at Richmond Marina  
and Services Available:

### FACILITIES, STAGING AREAS, POSSIBLE FIELD POSTS AND EQUIPMENT AVAILABLE:

Large staging area available at MSRC in Richmond Harbor or at the Richmond Marina. Possible field posts at any of the several marine terminals along Santa Fe channel in Richmond Harbor.

**COMMUNICATIONS PROBLEMS:** none known

**ADDITIONAL OPERATIONAL COMMENTS:**



Imagery: NAIP 2012 (Summer) 4-Band

