

**2-045 -A Site Summary- Disappointment Slough****2-045 -A**

County: **San Joaquin**  
USGS Quad: **Holt**

Thomas Guide Location

SF Bay and Delt

Latitude N

38 02.4

Longitude W

121 28.9

NOAA Chart: **18661 SACRAMENTO / SAN JOAQUIN RIVER**

Last Page Update : 7/1/2017

**SITE DESCRIPTION:**

This site extends about 7 miles from its mouth behind north Fern Island (north of Ward Cut) easterly to I-5, and includes the side channels Honker and Bishop Cuts. Throughout its length, it is laced with cross channels between its many marshy berm and channel islands. These islands are ecologically rich and covered with shrub-scrub and emergent vegetation. At the upper end near I-5 are several acres of mature riparian growth. Levee banks are ripped with pockets of emergent marshy/riparian growth. The Slough is a Delta Master Recreation Plan designated Natural Resource Area with Significant Habitat Values.

**SEASONAL and SPECIAL RESOURCE CONCERNS**

Marsh and riparian vegetation zones here are of "A" concern year-round. Special Status Species here include: winter-run chinook (F/SE) are a considerable concern from Oct 15- May 31; Swainson's hawk (ST); several rare plants occur here.

**RESOURCES OF PRIMARY CONCERN**

Ecologically sensitive and valuable marshy islands, margins and riparian growths are found throughout the length of this site. The water supports the typical diversified Delta aquatic community.

The Swainson's hawk (ST) occurs in this area. Site is rich in bird life typical of marshy and riparian species including waterfowl and marsh birds.

Other vertebrates are typical riverine species. Western pond turtle occurs here.

Juvenile winter-run chinook can be of some concern here. Juvenile and adult striped bass are typical as are warm water species.

In addition to the rich marshy, shrub-scrub, and riparian growths on islands and margins, rare plants occur here including California hibiscus, Suisun marsh aster and Mason's lilaeopsis.

**CULTURAL, HISTORIC, and ARCHEOLOGICAL SENSITIVITIES**

Contact the California Dept of Parks and Recreation - Office of Historic Preservation (Eric Allison (916) 653-9125), and the Northwest Information Center, (Bryan Much, Sonoma State College (707) 332-1117) for specific information on historic or cultural resources in this area.

**KEY CONTACTS: Trustee (T); Entry/Owner/Access (E); Cultural (C); or Other Assistance (O)**

Type	Name / Title	Organization	Phone
	John Henderson F/W Biologist	US Fish & Wildlife Service, Environmental Contam	(916) 414-6595
	Eric Larson	CA Dept. of Fish & Wildlife, Bay/Delta	(707) 944-5528
OEL	Dab Nomellini President	Central Delta Water Agency	(209) 465-5883

**ADDITIONAL SITE SUMMARY COMMENTS:**

## 2-045 -A Site Strategy - Disappointment Slough

County and Thomas Guide Location

SF Bay and Delta San Joaquin

NOAA CHART

18661 SACRAMENTO / SAN JOAQUIN RIVER

## 2-045 -A

Latitude N

Longitude W

38 02.4 121 28.9

### CONCERNS and ADVICE to RESPONDERS:

Last Page Update :7/1/2017

Concern here is protecting the many marshy channel islands and sensitive plants found there from oiling. The strategies are designed to keep oil from entering this channel by exclusion/collection booming. Responders should beware that sensitive plants are common here, and should avoid trampling vegetation. Also avoid tramping oil into sediments.

### HAZARDS and RESTRICTIONS:

Aerial traffic beware of high wires. Poison Oak. Slips trips and falls on levee riprap. Beware of shallows and snags in side channels.

### SITE STRATEGIES

Strategy 2-045.1 Objective: Exclude/Contain booming the slough mouth near the Ship Channel) at west end

Set harbor boom across channels at slough mouth. Anchor one boom end near west side riprap levee (Empire Tract) 800 ft across the slough on an upstream diagonal to the tip of Fern Island. Anchor a second boom length from Fern Island to mid-channel berm island and then on to the tip of Rindge Tract (500ft). Overlap boom legs to allow vessel traffic. Leave trailing boom lengths for a tidal seal. Back each leg with sorbent boom.

Strategy 2-045.2 Objective: Exclude/Contain booming at Honker Cut and Bishop Cut.

Honker Cut: At the intersection of Honker Cut and Disappointment Slough anchor one end of 4X4+ boom (200) at King Island levee and the other at Empire Tract, leaving trailing boom ends for tidal seal. This strategy can be deployed nearer 8 Mile Road if circumstances are favorable. Site may be appropriate for Shore-Side Skimming.

Bishop Cut: At the intersection of Bishop Cut and Disappointment Slough anchor one end of 4X4 boom (200) at Bishop Tract levee and the other at King Island leaving trailing boom ends for tidal seal. This strategy can be deployed nearer 8 Mile Road if circumstances are favorable. Site may be appropriate for Shore-Side Skimming.

### Table of Response Resources

strategy number	harbor boom	swamp boom	Other boom type	sorb boom	Anchoring no type and gear	Boom boat	Skiffs punts	Skimmers No Type	Special Equipment or comment No and kinds	staff deploy	Staff tend
2-045.1	1300			1500	5 2/25 & 3/15/DANFORTH	1	1			5	
2-045.2	0	400			3 2/15lb/danfort4	0	1			3	

### LOGISTICS

**DIRECTIONS: to site (by land and/or by water, to nearest launch ramp and are access permits required.)**

Key access to deployment is by boat. Site is water accessible from Stockton Deep Water Channel north at G 14 and from marinas on adjacent islands. Key land access is from private levee roads Rindge and Empire Tracts via 8-mile Rd from I-5. This site extends about 7 miles from its mouth behind north Fern Island (north of Ward Cut) easterly to I-5, and includes the side channels Honker and Bishop Cuts.

**LAND ACCESS:** LEVEE ROADS good unless wet

**WATER LOGISTICS:** depth problems only near shore

Limitations: depth, obstruction

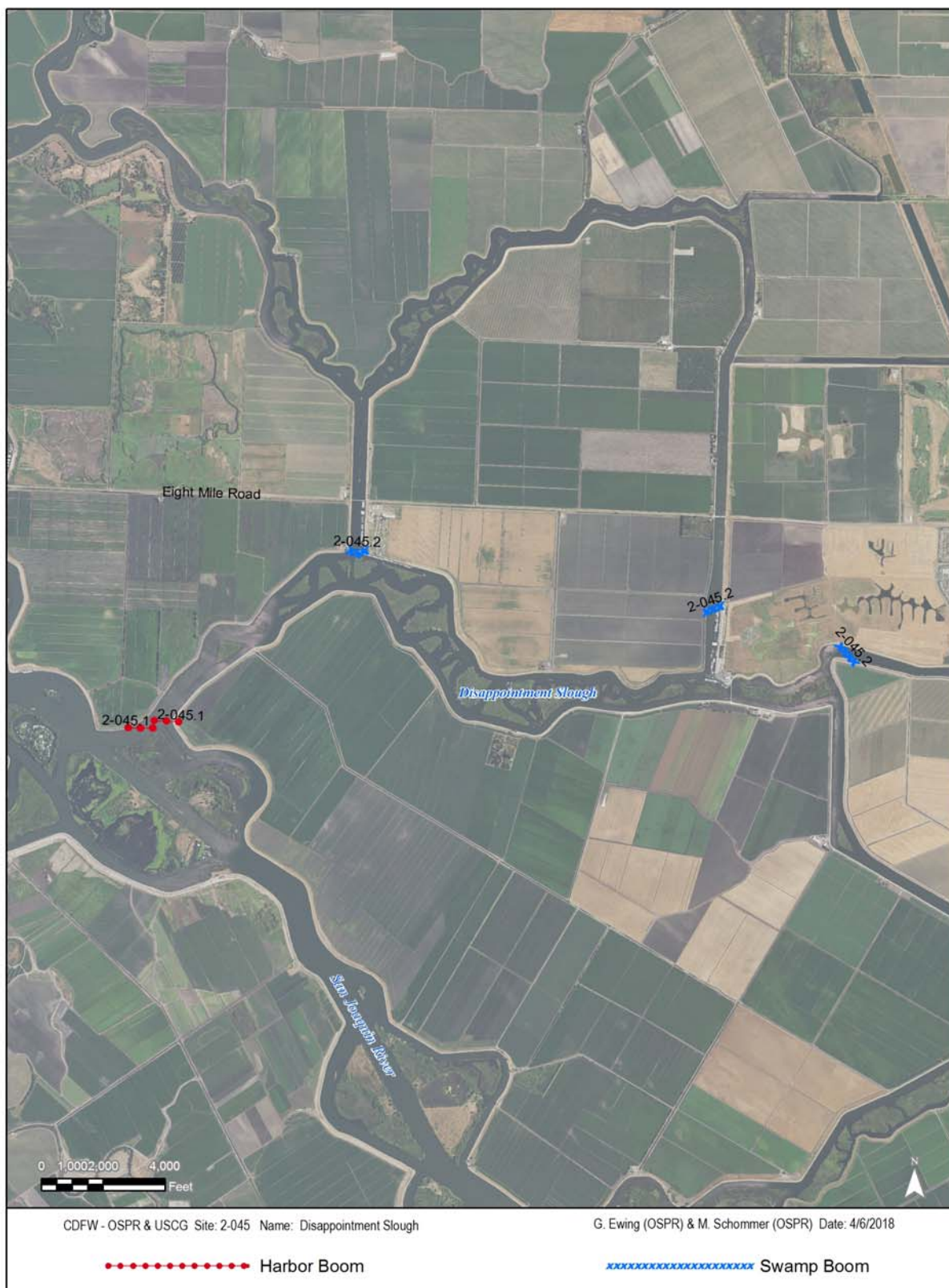
Launching, Loading, Docking and Services Available: Marina service and boat launch are available at Herman & Helen's at end of 8-mile Rd, Paradise Point Marina at Bishop Cut, and also at Honker Cut.

### FACILITIES, STAGING AREAS, POSSIBLE FIELD POSTS AND EQUIPMENT AVAILABLE:

Deployment possible from nearby levees. Also from nearby marinas consider using the end of 8-mile Rd as a major deployment site for this section of the Delta. Rental boats, restaurants, water, power, gas, marine repair and some camping is available at nearby marina/resorts.

**COMMUNICATIONS PROBLEMS:** none known

**ADDITIONAL OPERATIONAL COMMENTS:**



Imagery: NAIP 2016, 60 cm resolution

