

2-373-A Site Summary - Mountain View Slough**2-373-A****County:** Santa Clara **ACP Division/Segment:** SC - Y - S001 SC - Y - S002**NOAA Chart:** 18654 San Francisco Bay Southern Part **Map Book:** **Decimal Degrees:** 37.44802 -122.07806**Site Description:**

This site includes Mountain View Slough to North Shoreline Blvd. and the bay frontage for a one-half mile on each side of its mouth, and the extensive mudflat at the mouth. It is located on the southwest shore of South San Francisco Bay, approx 4.5 miles south of Dumbarton Bridge (Hwy 84). This site is within the San Francisco Bay National Wildlife Refuge (USFWS). This slough has a riparian cordgrass and pickleweed marsh at the mouth and along its banks. An extensive sheltered mudflat, over 1 mile wide, extends from the mouth out to the main channel of south San Francisco Bay.

Resources at Risk:*ESI and Habitat:* 9B Vegetated low banks

9A Sheltered tidal flats

10A Salt - and brackish-water marshes

List of Resources at Risk:

	Resource Name	Status	Presence	Sensitivity
Birds	California Ridgeway's rail	FE, SE	Year-round	Feb-Aug
Birds	California least tern	FE, SE	Apr-Sep	Apr-Jun
Birds	Western snowy plover	FT, SSC	Year-round	Mar-Oct
Fish	longfin smelt	ST	Year-round	Nov-May
Mammals	salt-marsh harvest mouse	FE, SE	Year-round	
Mammals	salt-marsh wandering shrew	SSC	Year-round	
Mammals	harbor seal	FP	Year-round	Mar-Jun

FT-Federally Threatened, FE-Federally Endangered, FP-Federally Protected, SE-State Endangered, ST-State Threatened, SP -State Protected, SR-State Rare, SSC-Species of Special Concern, BGEPA-Bald and Golden Eagle Protection Act, SSSP-State Special Status Species

List of Key Contacts:

Type	Name/Title	Organization	Phone
C	/Coordinator	Native American Heritage Commission	(916) 373-3710
C	/Coordinator	Northwest Information Center	(707) 588-8455
E	/Solar Plant Manager	Cargill Salt	(541) 261-9719
O	/Office	Point Blue Conservation Science	(707) 781-2555
T	/Spill Response Coordinator	USFWS, SF Bay-Delta Office	(916) 799-0588

C – Cultural, Historic, Archaeological; E – Entry/Owner/Access; O – Other; S – Safety; T – Trustee; X – Exclusion or Security

Additional Site Summary Comments:

A wide variety of bird species reside in the area.

Concerns and Advice to Responders:

The many rare and endangered species and plants living here are threatened by oil and oil spill response and trampling. Primary concern is to exclude oil from entering the Slough. Secondary concern is to minimize the exposure of the marshes fronting the bay by protective booming. Additional impacts from response and cleanup, and tramping of oil into soft marsh and mudflat sediments are also a concern.

Hazard and Restrictions:

Aircraft beware of overhead powerlines in the area. Watercraft be aware: the outlet to the bay is mostly silted in and undefined and the water is shallow (tide dependent); the extensive mudflat is over one mile wide.

Site Strategies:**Site Validation Level: II**

Strategy: 2-373.1 Objective: Exclude oil from entering Slough and small marsh channels.

Strategy: a. Deploy several (3-4) layers of 6X6 Sboom in an inverted "V" formation (chevron exclusion) at mouth of slough. Deploy sorbent boom between each layer of containment boom. Anchor with conventional anchors and stakes.

b. Place fence booms in small marsh channels.

c. Notify Cargill Salt to close all salt water intake culverts to the salt ponds.

NOTE: Airboat, hovercraft, helicopter deployment may be the only way to gain access to this site. In summer (dry season) it may be possible to deploy from south levee near towers.

Table of Response Resources

Equipment	Sub-Type	Size	Unit	QTY	Unit	Last Page Update
Boom	Swamp	6x6 inch		2000	feet	
Boom	Sorbent			2000	feet	
Anchor	Danforth	22 lb		12		
Vessel	Boom Boat			1		
Vessel	Skiff or Punt			1		
Staff	Staff to Deploy			7		

Strategy: 2-373.2 Objective: Shore line protection booming.

Strategy: Deploy oil snare, 6X6 Sboom or sorbent boom along marsh front. Anchor and/or stake in place.

Table of Response Resources

Equipment	Sub-Type	Size	Unit	QTY	Unit	Last Page Update
Boom	Swamp	6x6 inch		3800	feet	
Anchor	Danforth	22 lb		8		
Vessel	Boom Boat			1		
Vessel	Skiff or Punt			1		
Staff	Staff to Deploy			6		

Logistics:

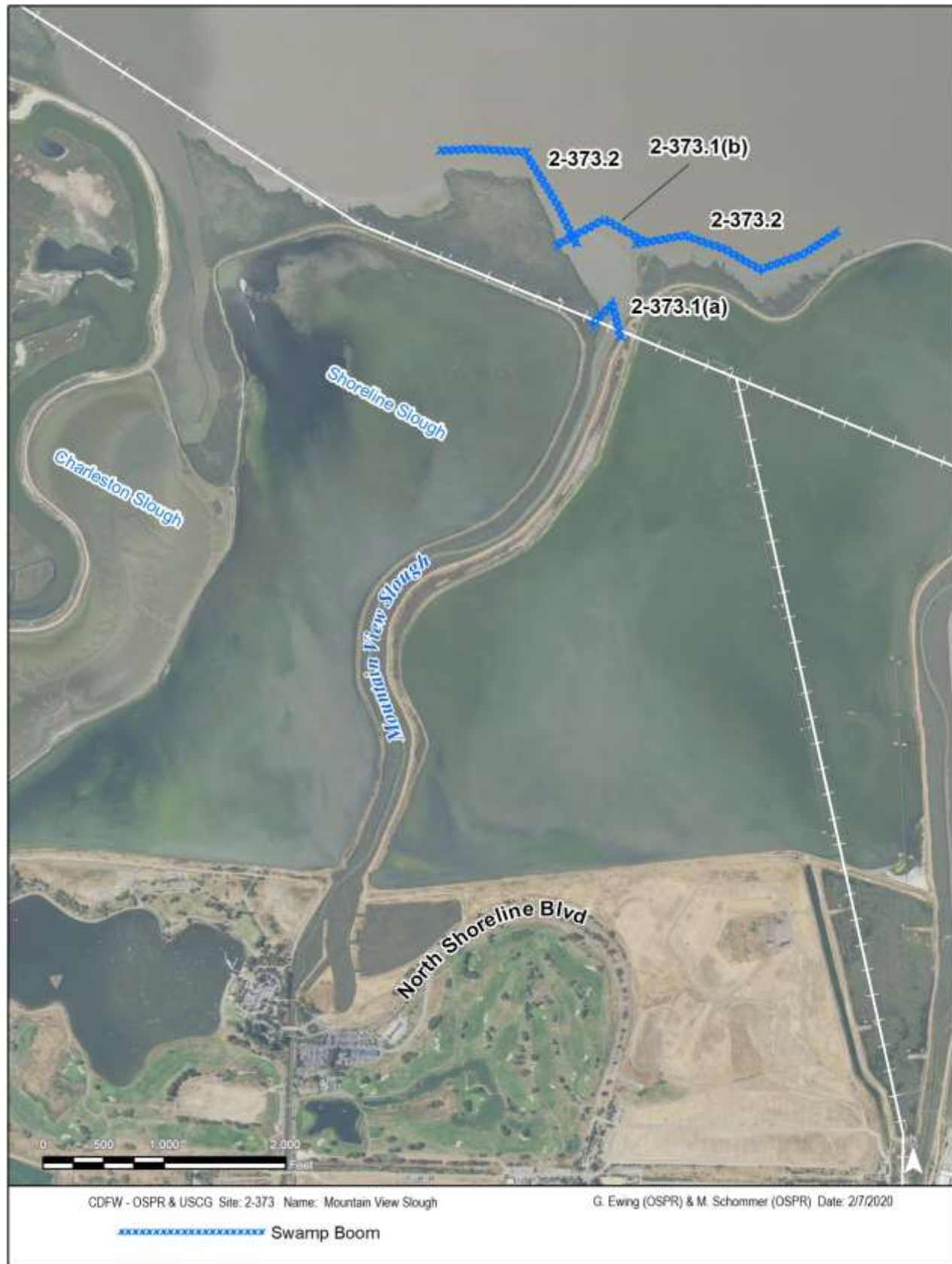
Directions: From Hwy 101, exit at Shoreline Blvd/Sterlin Rd and proceed bayward to Shoreland at Mountain View Park. Vehicle access is restricted: for levee road access contact City of Mountain View or Cargill Salt Co.

Land Access: Large trucks and ATV when levees are dry.

On-Water Limitations: EXTREME SHALLOW WATER; Boat launch ramps at Redwood City. Small hand launched boats can deploy from the south levee during summer (dry season). Also, small craft launch at Mayfield Slough.

Facilities, Staging Areas, Command Posts, Available Equipment: Staging at Port of Redwood City or public access at Mayfield Slough.

Communications Problems: Good reception throughout south bay.



Imagery: NAIP 2016, 60 cm resolution