

County: **Mendocino**  
 USGS Quad: **Albion**

Thomas Guide Location  
 CA Road Atlas  
 NOAA Chart: **18626**

Latitude N Longitude W  
 39 13' 30" 123 47' 30"

Last Page Update : 7/1/1996

#### SITE DESCRIPTION:

The site to protect is from the mouth of the Albion river upstream to the upper extent of tidal influence. The outer coast has a small semiprotected harbor that is open to navigation to shallow draft vessels. There are lots of offshore rocks and an extensive submerged reef in the near shore area around the mouth. The shoreline north and south of the mouth is characterized by vertical seawalls and steep rocky bluffs. Offshore rocks near Albion Cove are managed by BLM as part of the California Coastal National Monument.

#### SEASONAL and SPECIAL RESOURCE CONCERN

The site is a popular tourist attraction and should be protected from oiling. The river has a viable population of salmonids.

#### RESOURCES OF PRIMARY CONCERN

Eelgrass and associated communities in estuary

Extensive areas of surfgrass along vertical seawalls on northern side of entrance bay

Fringing marsh within estuary

Seabird rookeries (03-09): rocky headlands, offshore rocks, and seastacks shelter Pelagic cormorant, Pigeon guillemot.

Osprey (01-12)

Anadromous salmonids: Coho salmon (FE,SE), Steelhead (FT):

- spawning runs (09-06)

- juveniles/smolts (02-08)

Tidewater goby (FE,SSC)

Striped surfperch nursery

Red abalone

Eelgrass in estuary

#### CULTURAL, HISTORIC, and ARCHEOLOGICAL SENSITIVITIES

Cultural, Historical, and Archeological sites are known to exist in the area, however, the exact locations of these sites must be ascertained by contacting the Native American Heritage Commission at (916) 653-4082 and State Office of Historical Preservation (916) 445-7000, and/or Ms. Leigh Jordan, Coordinator of the Northwest Information Center (707) 588-8455.

#### KEY CONTACTS: Trustee (T); Entry/Owner/Access (E); Cultural (C); or Other Assistance (O)

Type	Name / Title	Organization	Phone
O		Mendocino County Sheriff's Dept.	(707) 463-4086
E		Albion River Campground	(707) 937-0606
T		California Dept of Fish and Game, Fort Bragg	(707) 964-9078
O	Troy Nicolini	National Weather Service Woodley Island	(707) 442-2171

#### ADDITIONAL SITE SUMMARY COMMENTS:

For further information about coastal access in this area, please refer to the California Coastal Commission's California Coastal Access Guide. For photos of the coastline in this area, please refer to the California Coastal Records Project ([www.californiacoastline.org](http://www.californiacoastline.org)).

# 1-468 -A Site Strategy - Albion River

County and Thomas Guide Location  
CA Road Atlas Mendocino

NOAA CHART  
18626

1-468 -A  
Latitude N Longitude W  
39 13' 30 123 47' 30"

## CONCERNS and ADVICE to RESPONDERS:

Excluding oil from impacting this popular boating and fishing port is a primary concern of this strategy. The senator has a camping site here.

## HAZARDS and RESTRICTIONS:

Water in the river is shallow at the boat ramp.

Last Page Update :

## SITE STRATEGIES

Strategy 1-468.1 Objective: Diversionary boom. Divert oil away from sensitive habitat.

Diversionary boom could be used to divert oil out of the current and onto the shore or to a suitable collection point, (where a skimmer can be operated). Place sorbent boom or pompoms upstream of the oil to limit spread on incoming tides.

Strategy 1-468.2 Objective: Minimize impacts to shoreline in impractical response locations, or when site conditions preclude mechanical recovery.

No strategy will be successful under prevailing conditions. Offshore dispersants should be considered.

## Table of Response Resources

strategy number	harbor boom	swamp boom	Other boom type	sorb boom	Anchoring no type and gear	Boom boat	Skiffs punts	Skimmers No Type	Special Equipment or comment No and kinds	staff deploy	Staff tend
1-468.1	300	0	0	300	12 22lb+ danforth anchors	0	1	0	0	5	
1-468.2	0	0	0	0	0	0	0	0	Off site dispersion may be the only option.		

## LOGISTICS

**DIRECTIONS: to site (by land and/or by water, to nearest launch ramp and are access permits required.)**

From U.S. hwy 101 at Cloverdale, take state hwy 128 to state hwy 1 at the mouth of the Navarro River. Go north on hwy 1 to M.P. 45.47, at north end of the Albion River bridge. Turn east on Albion Riverside Road at this point and follow road to Albion River Campground. The site to protect is from the mouth of the Albion river upstream to the upper extent of tidal influence. The outer coast has a small semiprotected harbor that is open to navigation to shallow draft vessels. There are lots of offshore rocks and an extensive submerged reef in the near shore area around the mouth. The shoreline north and south of the mouth is characterized by vertical seawalls and steep rocky bluffs. Offshore rocks near Albion Cove are managed by BLM as part of the California Coastal National Monument.

**LAND ACCESS:** Large truck access is possible but access is narrow and winding.

**WATER LOGISTICS:** The site has a boat ramp for shallow draft vessels.

Limitations: depth, obstruction

Launching, Loading, Docking

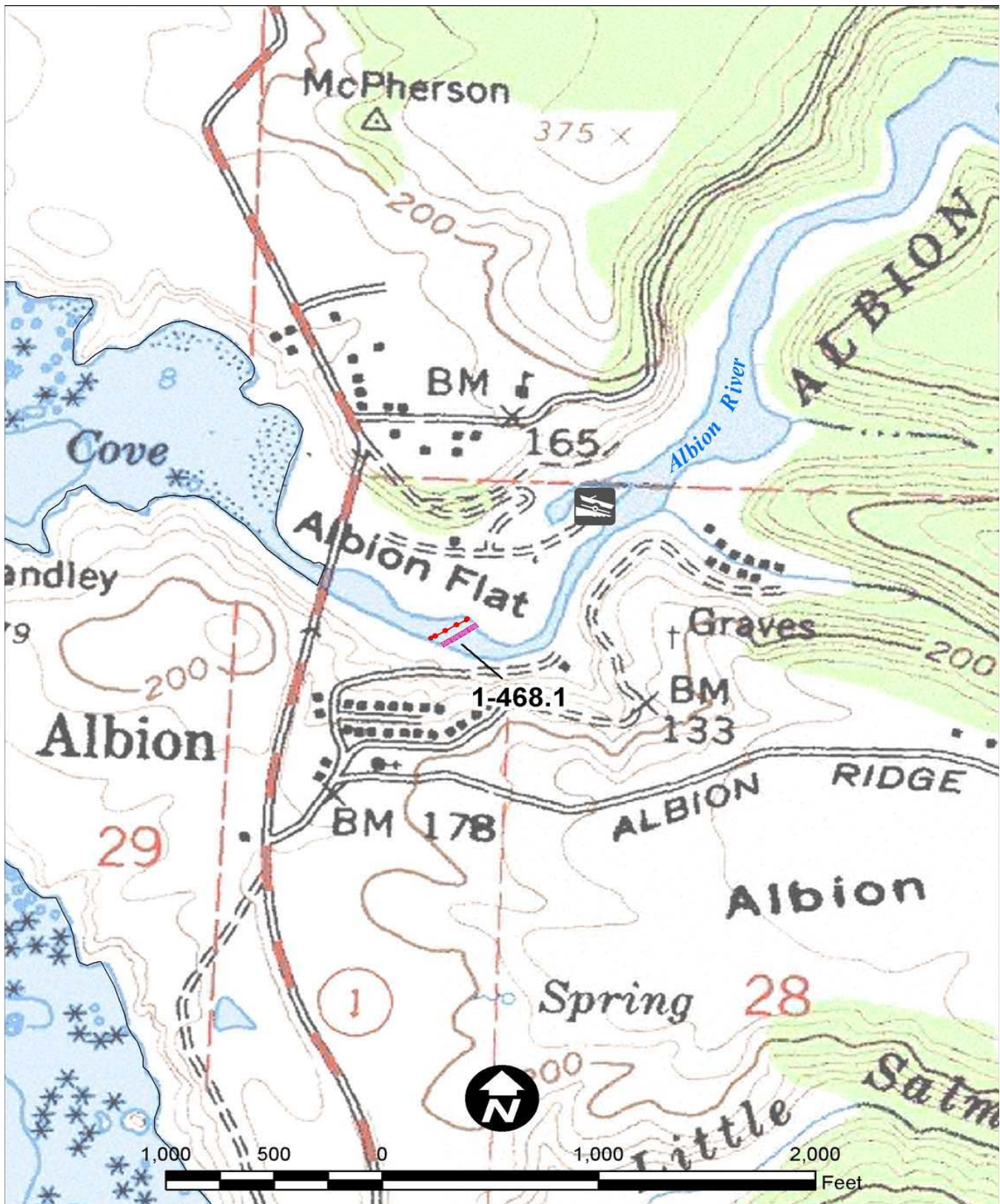
and Services Available:

## FACILITIES, STAGING AREAS, POSSIBLE FIELD POSTS AND EQUIPMENT AVAILABLE:

The harbor area has adequate staging to provide for local area response needs including a rugged small boat ramp. Public phones are available, but lodging, food and other utilities are very limited on site. For these missing items, please note that it is only a short drive to Ft. Bragg.

**COMMUNICATIONS PROBLEMS:** Remote, limited communications

## ADDITIONAL OPERATIONAL COMMENTS:



CALIFORNIA DEPARTMENT OF FISH & GAME (OSPR) and UNITED STATES COAST GUARD  
 Site: 1-468 Site Name: Albion River

Jeff Dayton (OSPR) & Greg Ewing (OSPR)  
 Date: May18, 2011

