

County: **Mendocino**
USGS Quad: **Mendocino**

Thomas Guide Location
CA Road Atlas
NOAA Chart: **18620**

Latitude N Longitude W
39 42' 30" 123 48' 30"

Last Page Update : 7/1/1996

SITE DESCRIPTION:

This site is a small tidal inlet at the mouth of Hardy Creek. The site is private property. Offshore rocks in the area are managed by BLM as part of the California Coastal National Monument. Small stream incises a sand and gravel beach and abuts a bedrock bluff on the northside of the valley. The narrow beach has a well developed storm berm. During severe storm conditions the entire beach is apparently overwashed, as evidenced by the presence of large logs up in the marsh on the south side of valley.

SEASONAL and SPECIAL RESOURCE CONCERN

Any response at this location would occur when oil threatens to enter the marsh by overwashing the berm or when the inlet mouth is open.

RESOURCES OF PRIMARY CONCERN

Marsh system behind beach forms small wetland.

Shorebirds and waterfowl utilize estuary and marsh habitat behind beach.

Red abalone

CULTURAL, HISTORIC, and ARCHEOLOGICAL SENSITIVITIES

Cultural, Historical, and Archeological sites are known to exist in the area, however, the exact locations of these sites must be ascertained by contacting the Native American Heritage Commission at (916) 653-4082 and State Office of Historical Preservation (916) 445-7000, and/or Ms. Leigh Jordan, Coordinator of the Northwest Information Center (707) 588-8455.

KEY CONTACTS: Trustee (T); Entry/Owner/Access (E); Cultural (C); or Other Assistance (O)

Type	Name / Title	Organization	Phone
O		Mendocino County Sheriff's Dept.	(707) 463-4086
T		California Dept of Fish and Game, Fort Bragg	(707) 964-9078
O	Troy Nicolini	National Weather Service Woodley Island	(707) 442-2171

ADDITIONAL SITE SUMMARY COMMENTS:

For further information about coastal access in this area, please refer to the California Coastal Commission's California Coastal Access Guide. For photos of the coastline in this area, please refer to the California Coastal Records Project (www.californiacoastline.org).

1-416 -A Site Strategy - Hardy Creek

County and Thomas Guide Location
CA Road Atlas Mendocino

NOAA CHART
18620

1-416 -A
Latitude N Longitude W
39 42' 30 123 48' 30"

CONCERNS and ADVICE to RESPONDERS:

Last Page Update :

The rugged coastline will prevent on shore response over most of this area. Off site measures including dispersants should be considered when a spill threatens to impact this area. Overflights should be careful to maintain flight path and altitude clearance distances that are large enough to prevent the flushing of birds and marine mammals from their nests, roosts, and haul outs sanctuaries on the offshore rocks in this area.

HAZARDS and RESTRICTIONS:

SITE STRATEGIES

This site is best protected by preventing the oil from arriving here, when possible. Off site response options including dispersants should be considered.

Strategy 1-416.1 Objective: Fly over or visit site to determine if any response is needed

This site will probably not benefit from on-site deployment of protection equipment. Site response will likely be limited to oil removal from off the beach.

Table of Response Resources

strategy number	harbor boom	swamp boom	Other boom type	sorb boom	Anchoring no type and gear	Boom boat	Skiffs punts	Skimmers No Type	Special Equipment or comment No and kinds	staff deploy	Staff tend
1-416.1	0	0	0	0	0	0	0	0	0		

LOGISTICS

DIRECTIONS: to site (by land and/or by water, to nearest launch ramp and are access permits required.)

Take U.S. hwy 101 north to state route 1 at Leggett. Follow state route 1 south to private road at M.P. 83.78. Follow this access road until it terminates at the head of the marsh/wetland. Road ends here, it does not access the beach. Proceed by foot. Beach access by steep foot path from state hwy 1 M.P. 83.53. This site is a small tidal inlet at the mouth of Hardy Creek. The site is private property. Offshore rocks in the area are managed by BLM as part of the California Coastal National Monument.

LAND ACCESS: Foot access only

WATER LOGISTICS:

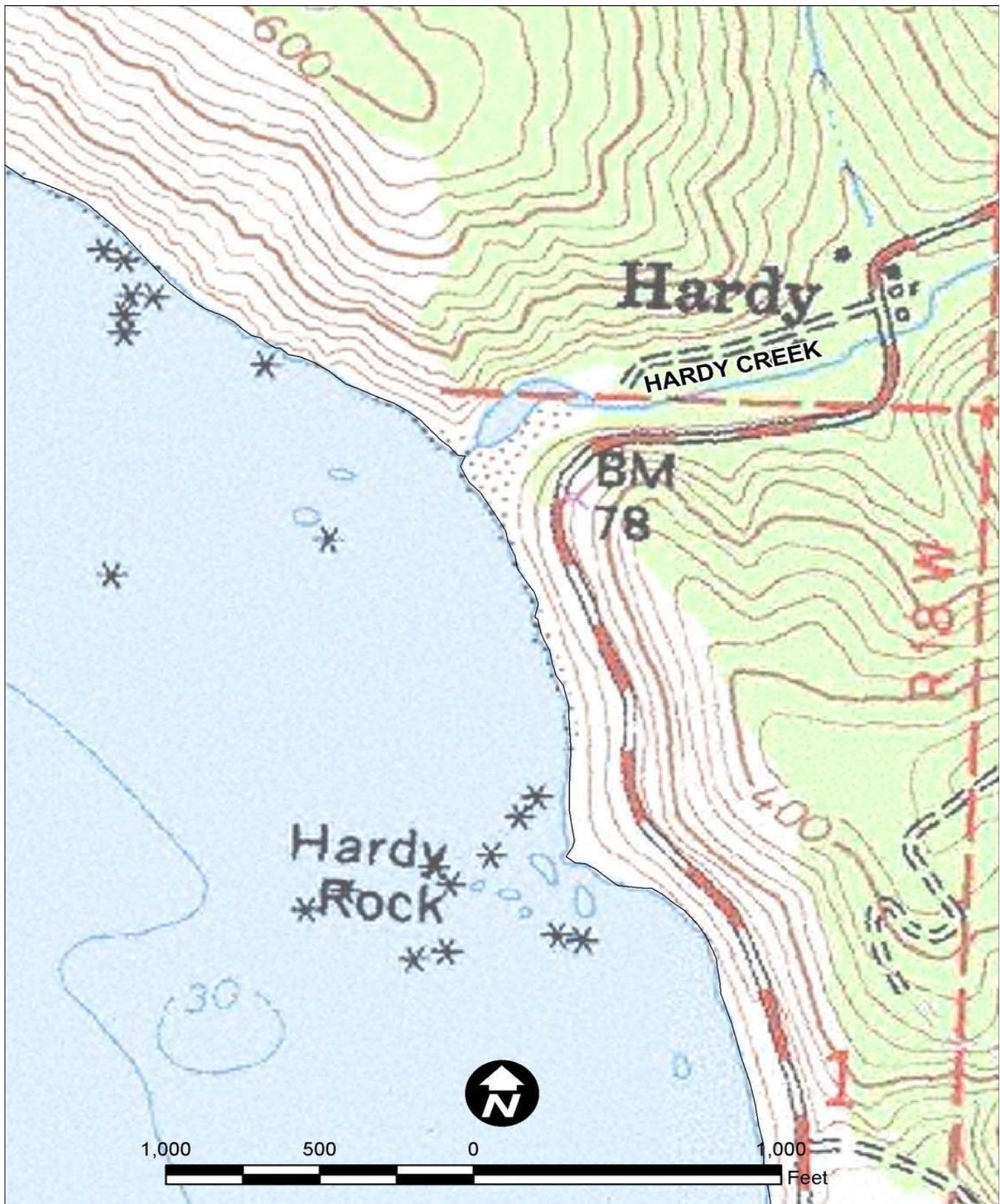
Limitations: depth, obstruction
Launching, Loading, Docking
and Services Available:

FACILITIES, STAGING AREAS, POSSIBLE FIELD POSTS AND EQUIPMENT AVAILABLE:

Very small roadside turn out for staging limited local response equipment. No utilities or facilities.

COMMUNICATIONS PROBLEMS: Remote, limited communications

ADDITIONAL OPERATIONAL COMMENTS:



CALIFORNIA DEPARTMENT OF FISH & GAME (OSPR) and UNITED STATES COAST GUARD
 Site: 1-416 Site Name: Hardy Creek

Jeff Dayton (OSPR) & Greg Ewing (OSPR)
 Date: May 18, 2011

