

County: **Humboldt**  
USGS Quad: **Capetown**

Thomas Guide Location  
CA Road Atlas  
NOAA Chart: **18623**

Latitude N Longitude W  
40 22' 30" 124 22' 30"

Last Page Update : 7/1/1996

**SITE DESCRIPTION:**

This site includes the coastline and tidal estuary near the mouth of the Bear River. This site is private property. Offshore rocks in the area are managed by BLM as part of the California Coastal National Monument. Tidal flats occur throughout range of map

**SEASONAL and SPECIAL RESOURCE CONCERN**

Breeding seabirds will use these rocks for nesting in the spring. Offshore rocks provide roosting and nesting habitat for birds and haul out locations for marine mammals. Care should be taken so that response activities do not flush wildlife from these areas. The offshore rocks have cultural significance for local tribes.

**RESOURCES OF PRIMARY CONCERN**

The rocks are sensitive to human intrusion year round, especially during nesting season (03-09) when the adults are on eggs and until the young have fledged from the nest.

Shorebirds and seabirds present.

Anadromous salmonids in Bear River

**CULTURAL, HISTORIC, and ARCHEOLOGICAL SENSITIVITIES**

Cultural, Historical, and Archeological sites are known to exist in the area, however, the exact locations of these sites must be ascertained by contacting the Native American Heritage Commission at (916) 653-4082 and State Office of Historical Preservation (916) 445-7000, and/or Ms. Vicki Bates, Coordinator of the North Coast Information Center (707) 482-1822.

**KEY CONTACTS: Trustee (T); Entry/Owner/Access (E); Cultural (C); or Other Assistance (O)**

Type	Name / Title	Organization	Phone
O		Humboldt County Sheriff	(707) 445-7251
T	Rick Hanks Manager	California Coastal National Monument	(831) 915-4621
O	Troy Nicolini	National Weather Service Woodley Island	(707) 442-2171

**ADDITIONAL SITE SUMMARY COMMENTS:**

For further information about coastal access in this area, please refer to the California Coastal Commission's California Coastal Access Guide. For photos of the coastline in this area, please refer to the California Coastal Records Project ([www.californiacoastline.org](http://www.californiacoastline.org)).

# 1-270 -B Site Strategy - Bear River

County and Thomas Guide Location

CA Road Atlas Humboldt

NOAA CHART

18623

# 1-270 -B

Latitude N

Longitude W

40 22' 30 124 22' 30"

## CONCERNS and ADVICE to RESPONDERS:

Last Page Update :

The rugged coastline will prevent on shore response over most of this area. Off site measures including dispersants should be considered when a spill threatens to impact this area. Overflights should be careful to maintain flight path and altitude clearance distances that are large enough to prevent the flushing of birds and marine mammals from their nests, roosts, and haul outs sanctuaries on the offshore rocks in this area.

## HAZARDS and RESTRICTIONS:

Extreme current, high energy shoreline, offshore rocks.

## SITE STRATEGIES

This site is best protected by preventing the oil from arriving here, when possible. Off site response options including dispersants should be considered.

Strategy 1-270.1 Objective: Prevent spilled oil from floating to this site.

Conventional on-scene response is not possible at this site. Protect with off-site response measures only.

## Table of Response Resources

strategy number	harbor boom	swamp boom	Other boom type	sorb boom	Anchoring no type and gear	Boom boat	Skiffs punts	Skimmers No Type	Special No and kinds	Equipment or comment	staff deploy	Staff tend
1-270.1	0	0	0	0	0	0	0	0	0	Protect with off-site response measures only.		

## LOGISTICS

**DIRECTIONS: to site (by land and/or by water, to nearest launch ramp and are access permits required.)**

From Eureka, take U.S. hwy 101 south and take Fernbridge/Ferndale exit. Continue on this road, turn right onto bridge (State route 211). Follow state route 211 through Ferndale. Turn left onto Mattole Road (2 lane road reduced by earthquake damage to 1 lane road in spots). Access to this area is just off Mattole Road along coast, where Mattole Road crosses Bear River bridge.

Private landowner values and defends his privacy. This site includes the coastline and tidal estuary near the mouth of the Bear River. This site is private property. Offshore rocks in the area are managed by BLM as part of the California Coastal National Monument.

**LAND ACCESS:** Access may be denied by landowner; Contact Sheriff or BLM

## WATER LOGISTICS:

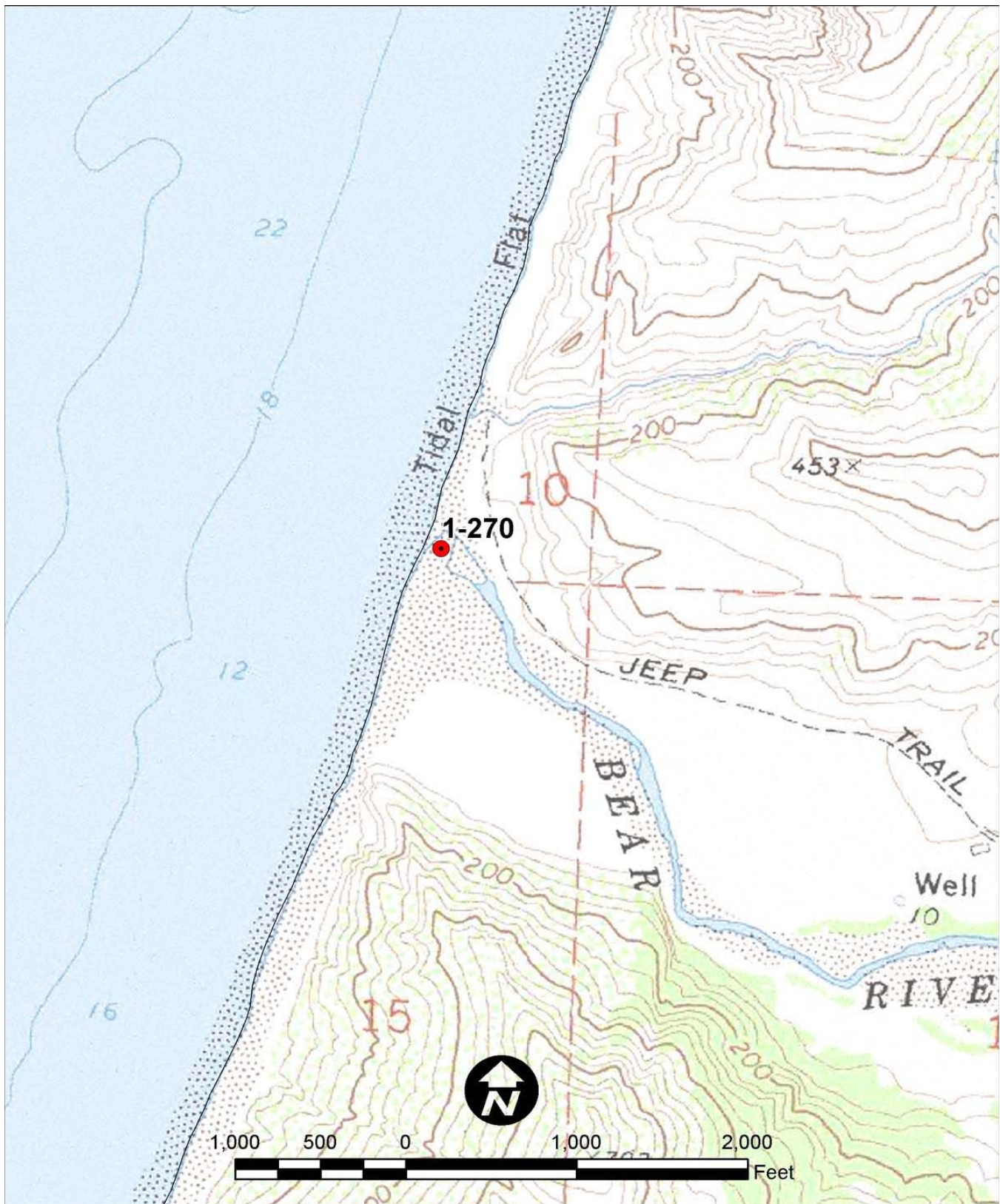
Limitations: depth, obstruction

Launching, Loading, Docking No launch in area  
and Services Available:

## FACILITIES, STAGING AREAS, POSSIBLE FIELD POSTS AND EQUIPMENT AVAILABLE:

**COMMUNICATIONS PROBLEMS:** Remote, limited communications

**ADDITIONAL OPERATIONAL COMMENTS:** Lost Coast area cell phone may not work



CALIFORNIA DEPARTMENT OF FISH & GAME (OSPR) and UNITED STATES COAST GUARD  
 Site: 1-270 Site Name: Bear River

Jeff Dayton (OSPR) & Greg Ewing (OSPR)  
 Date: June 10, 2011

