

1-210 -A Site Summary- Redding Rock

1-210 -A

County: **Humboldt**
USGS Quad: **Orick**

Thomas Guide Location
CA Road Atlas
NOAA Chart: **18600**

Latitude N Longitude W
41 20' 30" 124 05' 30"

Last Page Update : 7/1/1996

SITE DESCRIPTION:

Redding Rock is managed as part of the California Coastal National Monument by the Bureau of Land Management. Redding Rock is a large offshore rock that is 7.25 miles west northwest of Orick and 5 miles offshore.

SEASONAL and SPECIAL RESOURCE CONCERN

Breeding seabirds will use these rocks for nesting in the spring. Offshore rocks provide roosting and nesting habitat for birds and haul out locations for marine mammals. Care should be taken so that response activities do not flush wildlife from these areas. The offshore rocks have cultural significance for local tribes.

RESOURCES OF PRIMARY CONCERN

The rocks are sensitive to human intrusion year round, especially during nesting season (03-09) when the adults are on eggs and until the young have fledged from the nest.

Seabirds: Common murre, Brandt's cormorant, Western gull, Pigeon guillemot

Steller sea lion (FT)(01-12) in low numbers

CULTURAL, HISTORIC, and ARCHEOLOGICAL SENSITIVITIES

Cultural, Historical, and Archeological sites are known to exist in the area, however, the exact locations of these sites must be ascertained by contacting the Native American Heritage Commission at (916) 653-4082 and State Office of Historical Preservation (916) 445-7000, and/or Ms. Vicki Bates, Coordinator of the North Coast Information Center (707) 482-1822.

KEY CONTACTS: Trustee (T); Entry/Owner/Access (E); Cultural (C); or Other Assistance (O)

Type	Name / Title	Organization	Phone
T		Redwood National & State Parks	(707) 464-6101
T	Randy Brown	US Fish and Wildlife Service	(707) 822-7201
T	Rick Hanks Manager	California Coastal National Monument	(831) 915-4621
O	Troy Nicolini	National Weather Service Woodley Island	(707) 442-2171

ADDITIONAL SITE SUMMARY COMMENTS:

For further information about coastal access in this area, please refer to the California Coastal Commission's California Coastal Access Guide. For photos of the coastline in this area, please refer to the California Coastal Records Project (www.californiacoastline.org).

1-210 -A Site Strategy - Redding Rock

County and Thomas Guide Location

CA Road Atlas Humboldt

NOAA CHART

18600

1-210 -A

Latitude N

Longitude W

41 20' 30 124 05' 30"

CONCERNS and ADVICE to RESPONDERS:

Last Page Update :

Overflights and response vessels should give this rock a wide berth to avoid flushing birds and marine mammals from off of the rock. The rugged coastline will prevent on shore response over most of this area. Off site measures including dispersants should be considered when a spill threatens to impact this area. Overflights should be careful to maintain flight path and altitude clearance distances that are large enough to prevent the flushing of birds and marine mammals from their nests, roosts, and haul outs sanctuaries on the offshore rocks in this area.

HAZARDS and RESTRICTIONS:

Offshore rock with steep sides. Seas can be dangerous. Extreme currents, high energy shoreline. Other offshore rocks in area.

SITE STRATEGIES

The site is 5 miles from the mainland and the ocean currents and waves can be large and unpredictable. This site is best protected by preventing the oil from arriving here, when possible. Off site response options including dispersants should be considered.

Table of Response Resources

strategy number	harbor boom	swamp boom	Other boom type	sorb boom	Anchoring no	Boom boat	Skiffs punts	Skimmers No Type	Special Equipment or comment No and kinds	staff deploy	Staff tend
--------------------	----------------	---------------	--------------------	--------------	-----------------	--------------	-----------------	---------------------	--	-----------------	---------------

LOGISTICS

DIRECTIONS: to site (by land and/or by water, to nearest launch ramp and are access permits required.)

No access. Rock lies approximately 6 miles offshore. Boat access limited due to steep sides. Survey area by helicopter. Redding Rock is managed as part of the California Coastal National Monument by the Bureau of Land Management.

LAND ACCESS: None

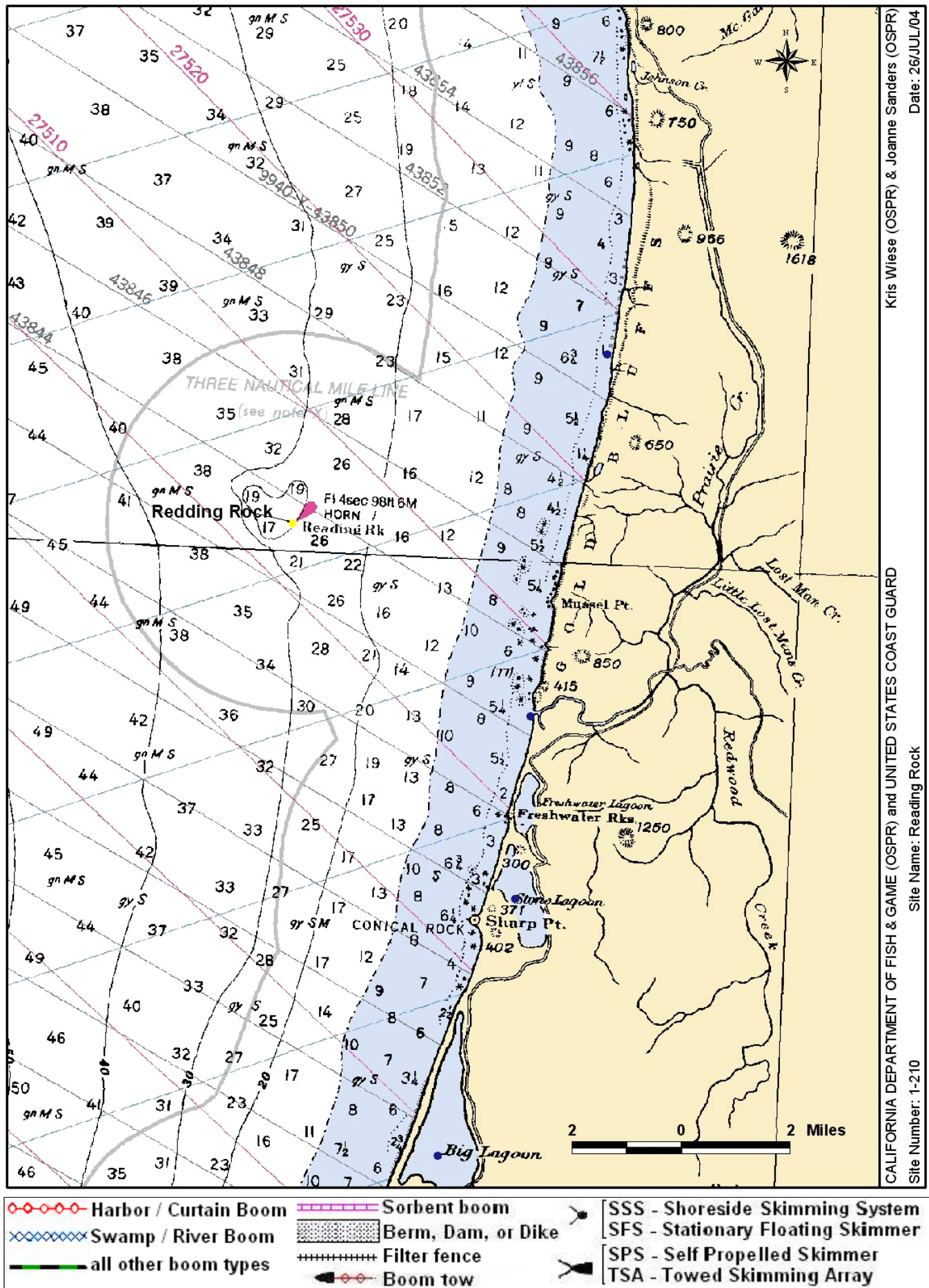
WATER LOGISTICS: Vessels are discouraged from landing personnel on this rock.
Limitations: depth, obstruction
Launching, Loading, Docking
and Services Available:

FACILITIES, STAGING AREAS, POSSIBLE FIELD POSTS AND EQUIPMENT AVAILABLE:

The nearest staging area in on the mainland at the Redwood National & State Park facility in Orick.

COMMUNICATIONS PROBLEMS:

ADDITIONAL OPERATIONAL COMMENTS: Offshore rocks can contain copious amounts of seabird guano. APR, gloves, and Tyvex



Kris Wiese (OSPR) & Joanne Sanders (OSPR)
Date: 26/JUL/04

CALIFORNIA DEPARTMENT OF FISH & GAME (OSPR) and UNITED STATES COAST GUARD
Site Name: Redding Rock

Site Number: 1-210