

# Shrimp ID

*Palaemonetes* sp.



- Freshwater only.
- Straight rostrum, no crest.
- No gastric spine.
- Medium sized, gravid at >30mm (length w/o rostrum).
- Body looks similar to *Exopalaemon*.

# Shrimp ID

## *Exopalaemon modestus*



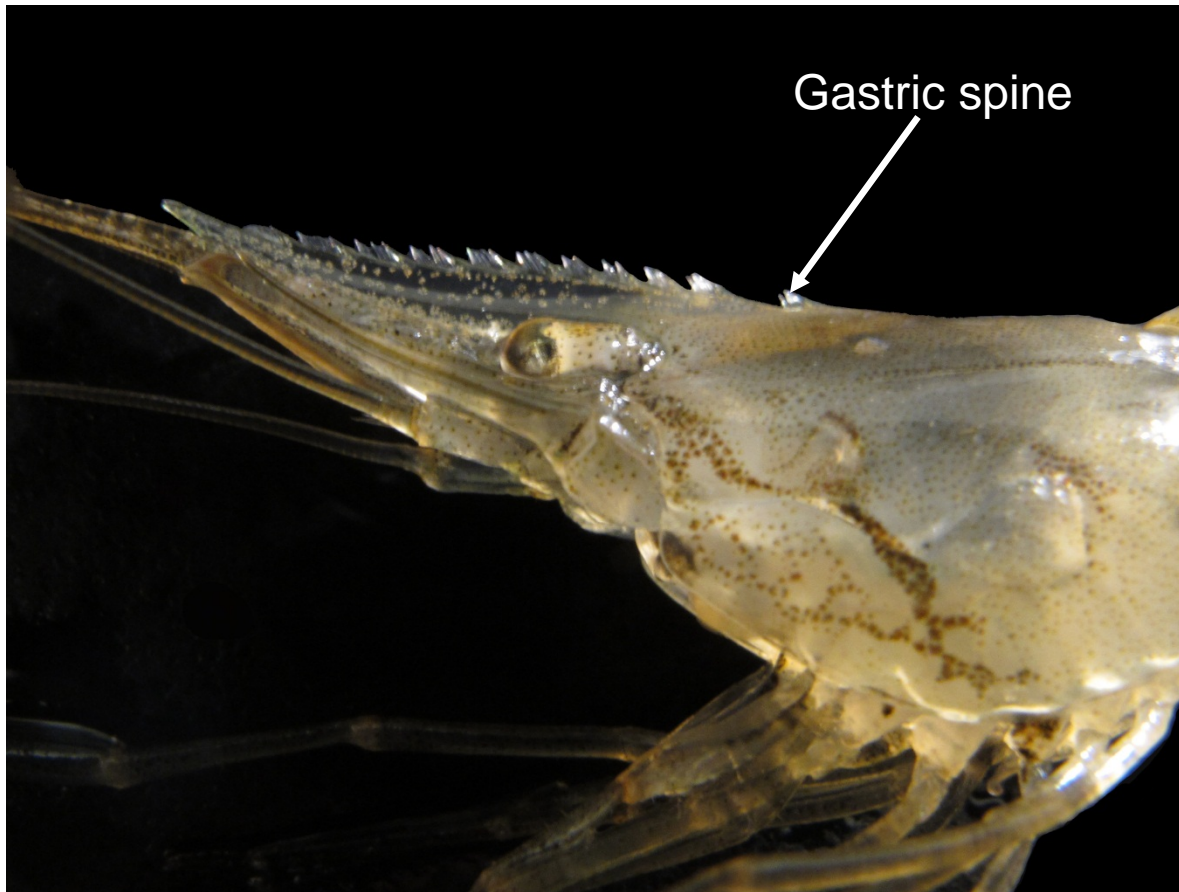
- Introduced species usually found in freshwater but in brackish up to 18 ppt.
- Rarely seen below Carquinez Strait.
- Rostrum with high crest.
- No gastric spine.
- Translucent body when caught in field.

Gastric spine absent



# Shrimp ID

*Palaemon macrodactylus*



- Species found in marine to brackish water and occasionally in tidal freshwater.
- Straight “saw-like” rostrum, no crest.
- Gastric spine located directly behind the base of the rostrum.

# Shrimp ID

*Crangon spp.*



[http://en.wikipedia.org/wiki/Crangon\\_crangon](http://en.wikipedia.org/wiki/Crangon_crangon)

- Salt and pepper coloration.
- Very reduced rostrum, in field ID, rostrum will not be visible.
- Small gastric spine visible, but not rostrum.
- *C. franciscorum* is common in low salinities, including the western Delta. Other species more marine.



# Shrimp ID

*Heptacarpus spp.*



© L. Schroeder



[http://www.baue.org/images/galleries/v/local/crb\\_breakwater/DSC9305.jpg.html](http://www.baue.org/images/galleries/v/local/crb_breakwater/DSC9305.jpg.html)



[www.baue.org/images/galleries/v/FieldGuide/Crustaceans/Heptacarpus\\_stimpsoni/DSC\\_0888.jpg.html](http://www.baue.org/images/galleries/v/FieldGuide/Crustaceans/Heptacarpus_stimpsoni/DSC_0888.jpg.html)

- “Broken-back” body style.
- Small rostrum with < 8 teeth.
- Found in a variety of colors including, blues, reds, greens, and all with vertical stripes on body.
- Very small shrimp compared to other species caught, usually less than 25 mm total length.
- Marine species.

# Shrimp ID

## *Pandalus danae*

Dock shrimp, *Pandalus danae*

Continuous diagonal stripes

Photo: Scott Groth, ODFW

- Dock (Coonstripe) Shrimp
- Long up-turned rostrum with large teeth along the dorsal margin
- Bright red stripes along posterior of body

- Marine species
- Usually in sandy or rocky substrates



Photo: Larry Ellis