



October 30, 2007

Mr. Dan Klemann  
800 South Victoria Ave.  
Ventura, CA 93009  
Submitted via email: *Daniel.klemann@ventura.org*

Subject: Botanical Survey Report for the North Marr Ranch Project (Case No. SD06-0057/ZN06-008)

Dan:

Tetra Tech Inc. has completed a rare plant survey at the North Marr Ranch project site. The results of the survey are documented within this report.

## **BACKGROUND**

A general survey of the project site to assess the potential presence of special-status plant and wildlife species and their habitat was previously conducted by Tetra Tech, Inc. biologists Ms. Michelle Bates and Ms. Heather Moine. During completion of the survey, it was determined that portions of the site are undeveloped open space that requires botanical surveys. Botanical surveys are required in order to identify potential habitat for special-status plant species and the potential occurrence of special-status plant species within the project site.

For the purposes of this report, special-status species meet one or more of the following criteria:

- Federal or state listed threatened or endangered species,
- Federal or state proposed threatened or endangered species,
- Federal candidate species,
- State rare species,
- Species monitored by the California Natural Diversity Database (CNDDB),
- Plant species on the California Native Plant Society (CNPS) List, or
- Locally important species.

Locally important species are those on the Ventura County Locally Important Species List or that meet Ventura County's definition of a Locally Important Species (Ventura County 2006).

## **PROJECT LOCATION AND DESCRIPTION**

The project site is located at 4730 Tapo Canyon Road, in unincorporated, Ventura County, California just east of Tapo Canyon Road and about 3 miles north of the Simi Valley Freeway, as shown in Figure 1. The entire project parcel is undeveloped hilly open space with non-native grassland and scattered oak trees.

Vegetation at the site was classified according to *A Manual of California Vegetation* (Sawyer and Keeler-Wolf 1995). Plant communities within the site include non-native annual grasses with a mixture of California sagebrush (*Artemisia californica*) series and mixed sage series. Oak trees are also scattered throughout the site. No standing water has been observed at the site during the site visits and surveys conducted.

It should be noted that the 2007 water year is one of the driest years on record. Tetra Tech biologists have been conducting rare plant surveys in many sites within Ventura County during 2007. At these reference sites, flowering species have been observed, including mariposa lilies, dudleyas, and buckwheats. As a result, the results of this rare plant survey adequately characterize the potential for occurrence of special-status plant species within the North Marr Ranch project site.

## **METHODS AND RESULTS**

Prior to completion of field surveys, the California Department of Fish and Game (CDFG) Natural Diversity Database (CNDDDB) was searched in order to determine which special-status plant species could occur within the project site (CDFG 2007). Special-status plant species with the potential to occur at the project site based on the search of the CNDDDB are described in Table 1.

Based on the flowering periods shown in Table 1, rare plant surveys were conducted within July 2007.

A botanical field survey was conducted on July 5, 2007 by Tetra Tech biologists Ms. Michelle Bates and Ms. Heather Moine. During completion of the field survey, the areas proposed for disturbance and a buffer area around these areas was systematically walked by surveyors. Inaccessible areas were evaluated through binoculars (rocky cliff faces, etc.).

**Table 1: Special-status Plant Species that Could Occur at the Marr Ranch Project Site**

Scientific Name	Common Name	Status	Habitat	Flowering Period	Nearest Record
<i>Calochortus plummerae</i>	Plummer's mariposa lily	1B.2	Coastal scrub, chaparral, grassland, woodland, lower montane coniferous forest. Rocky and sandy sites. Common after fire. 90-1610 meters.	May-July	Within 0.5 mile of the sites. Previous report states that this species has been found within Marr Ranch, but may be extirpated.
<i>Deinandra minthornii</i>	Santa Susana tarplant	SR, 1B.2	Chaparral, coastal scrub. Sandstone outcrops and crevices, in shrubland. 280-760 m. Crevices of sandstone bluffs and outcrops in the chaparral in the Santa Susana and Santa Monica mountains of Los Angeles and Ventura counties.	July-November	Within 5 miles.

**Notes:** Nearest record is based from the CNDDDB, search results for the Santa Susana Quadrangle. Distances are approximate.

**Status Codes:**

SR – State Rare

CNPS Lists

1B.2 – Plants that are fairly endangered in California, and rare or endangered elsewhere.

During completion of the botanical survey, plant species found within the survey area were identified. Not all trees were surveyed. Species found during the survey are listed in Table 2.

**Table 2: Plant Species Observed at the North Marr Ranch Project Site**

Scientific Name	Common Name
<i>Amsinckia menziesii</i> (=A. <i>intermedia</i> )	Common fiddleneck
<i>Artemisia californica</i>	California sagebrush
<i>Asclepias fascicularis</i>	Narrow-leaved milkweed
<i>Avena barbata</i>	Rye grass
<i>Baccharis pilularis</i>	Coyote brush
<i>Baccharis salicifolia</i>	Mule fat
<i>Brassica nigra</i>	Black mustard
<i>Bromus diandrus</i>	Ripgut grass
<i>Bromus hordeaceus</i>	Brome
<i>Bromus madritensis</i>	Foxtail chess
<i>Calystegia macrostegia</i>	Morning glory
<i>Centaurea melitensis</i>	Tocalote
<i>Chamaesyce albomarginata</i> (=Euphorbia <i>albomarginata</i> )	Rattlesnake weed
<i>Chenopodium ambrosioides</i>	Mexican tea
<i>Chlorogalum pomeridianum</i>	Soap plant
<i>Croton californicus</i>	California croton
<i>Cucurbita foetidissima</i>	Stinking gourd
<i>Datura wrightii</i>	Jimson weed
<i>Deinandra fasciculata</i>	Slender tarplant
<i>Encelia farinose</i>	Brittlebush, sunflower

**Table 2: Plant Species Observed at the North Marr Ranch Project Site**

<i>Eremocarpus setigerus</i>	Doveweed
<i>Eriogonum elongatum</i> var. <i>elongatum</i>	Longstem buckwheat
<i>Eriogonum fasciculatum</i>	California buckwheat
<i>Gnaphalium californicum</i>	California everlasting
<i>Hazardia squarrosa</i> (= <i>Haplopappus squarrosus</i> )	Goldenbush
<i>Isomeris arborea</i>	Bladderpod
<i>Lessingia filaginifolia</i>	California aster
<i>Leymus condensatus</i>	Giant wild rye
<i>Lotus scoparius</i>	Deer weed
<i>Lupinus bicolor</i>	Dove lupine
<i>Malacothamnus fasciculatus</i>	Bush mallow
<i>Malosma laurina</i> (= <i>Rhus laurina</i> )	Laurel sumac
<i>Marrubium vulgare</i>	Horehound
<i>Mimulus aurantiacus</i> (= <i>M. longiflorus</i> )	Bush monkey flower
<i>Nicotiana glauca</i>	Tree tobacco
<i>Opuntia littoralis</i>	Coastal prickly pear
<i>Paeonia californica</i>	Wild celery – red stemmed
<i>Penstemon centranthifolius</i>	Scarlet bugler
<i>Phacelia cicutaria</i>	Caterpillar phacelia
<i>Quercus agrifolia</i>	Coast live oak
<i>Quercus berberidifolia</i>	Scrub oak
<i>Quercus lobata</i>	Valley oak
<i>Rosa californica</i>	California wild rose
<i>Salsola tragus</i>	Russian thistle
<i>Salvia apiana</i>	White sage
<i>Salvia leucophylla</i>	Purple sage
<i>Salvia mellifera</i>	Black sage
<i>Sambucus mexicana</i>	Mexican elderberry
<i>Toxicodendron diversilobum</i>	Poison oak
<i>Verbena lasiostachys</i>	Verbena
<i>Yucca whipplei</i>	Our Lord's candle

## DISCUSSION

No special-status plants were found during the rare plant survey conducted during July 2007. Therefore, future development within the survey area would not generate impacts to special-status plant species.

## QUALIFICATIONS

Ms. Michelle Bates, a senior biologist with 8 years of experience, has a background in endangered species issues and ecology; habitat restoration; wetlands delineation; and ecological risk assessment. Ms. Bates has completed many rare plant surveys at sites throughout California, including Santa Barbara and Ventura Counties. She also designed and implemented a rare plant population study at Edwards Air Force Base. Ms. Bates is currently on the list of approved biologists for the Counties of Santa Barbara, Ventura, and San Luis Obispo.



Ms. Heather Moine, a biologist/environmental scientist with 2 years of experience, has a background in rare plant surveys, habitat restoration, general biological surveys and impact assessments, water quality monitoring, permitting services, and steelhead habitat assessments. She has conducted several previous rare plant surveys at sites within Santa Barbara and Ventura Counties.

## CONCLUSIONS

No special-status plants were found during the rare plant survey conducted during July 2007. Therefore, future development within the survey area would not generate impacts to special-status plant species.

Please feel free to contact Ms. Michelle Bates at (805) 681-3100 x 147 or [michelle.bates@tetrattech.com](mailto:michelle.bates@tetrattech.com) if you have any questions or comments on this report.

Sincerely,

A handwritten signature in black ink that reads 'Michelle Bates'.

Michelle Bates  
Project Manager/Senior Biologist, Tetra Tech, Inc.

A handwritten signature in black ink that reads 'Heather Moine'.

Heather Moine  
Biologist, Tetra Tech, Inc.

## Attachments

Figure 1: Site Location Map



## REFERENCES

California Department of Fish and Game (CDFG)

- 2007 California Natural Diversity Database (CNDDDB). Rarefind: A database application for the California Department of Fish and Game, Natural Heritage Division data, California Diversity Database, Sacramento. Commercial Version, data to expire December 2, 2007.

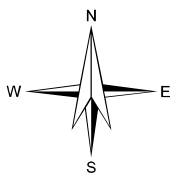
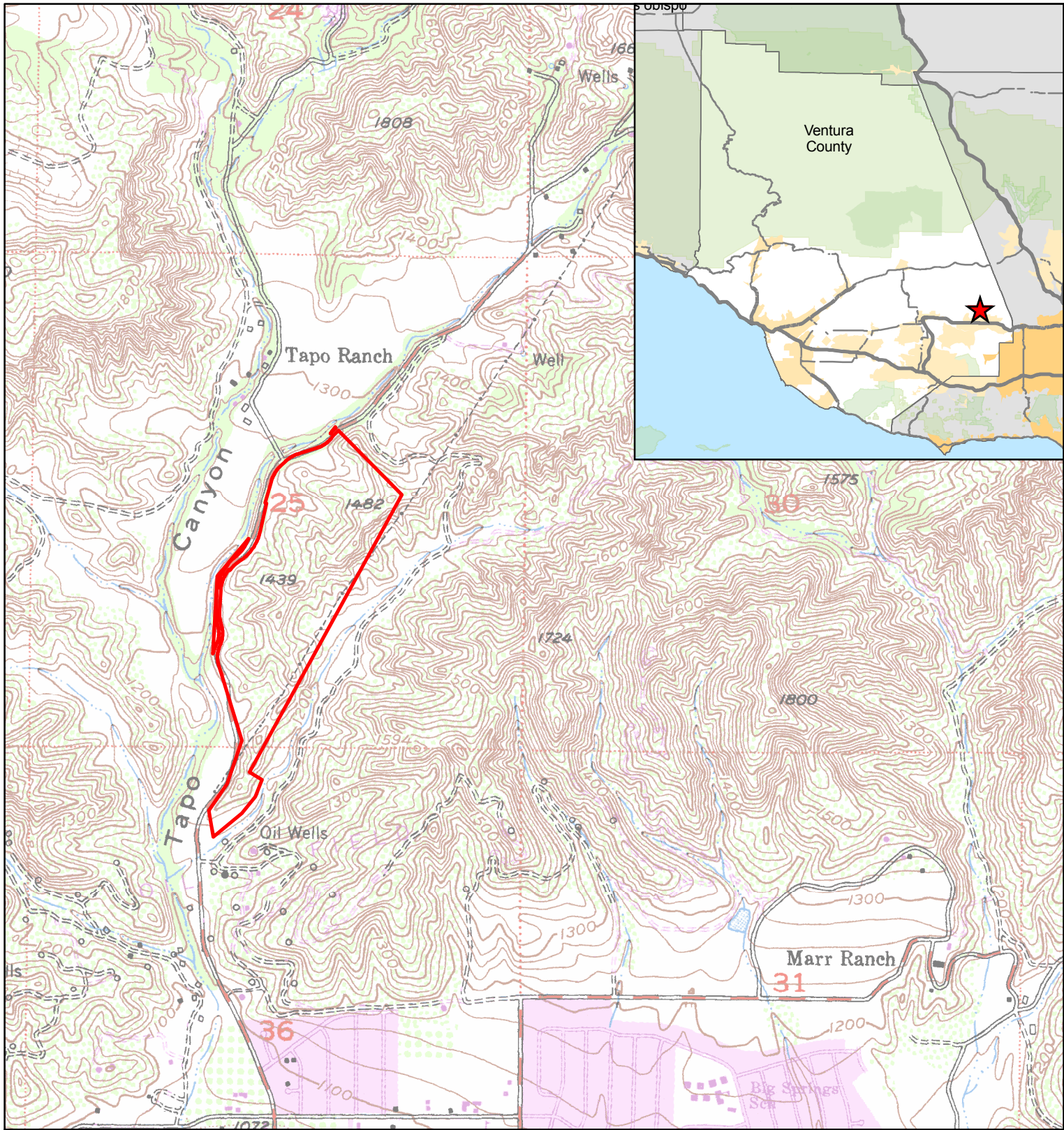
Sawyer, J. and T. Keeler-Wolf

- 1995 *A Manual of California Vegetation*. California Native Plant Society.

Ventura County

- 2006 Ventura County's list of Locally Important Species. Available online:  
[http://www.ventura.org/planning/programs\\_services/bio\\_resources/bio\\_resources.htm](http://www.ventura.org/planning/programs_services/bio_resources/bio_resources.htm).





0 500 1,000 2,000 3,000 Feet

## North Marr Ranch Site

### Site Location Map



4213 State Street, Suite 100  
Santa Barbara, CA 93110

TC NO.	DATE	DRAWN BY	DWG NO.	FIGURE
19756-04	10/30/07	REYNOLDS	6539	1