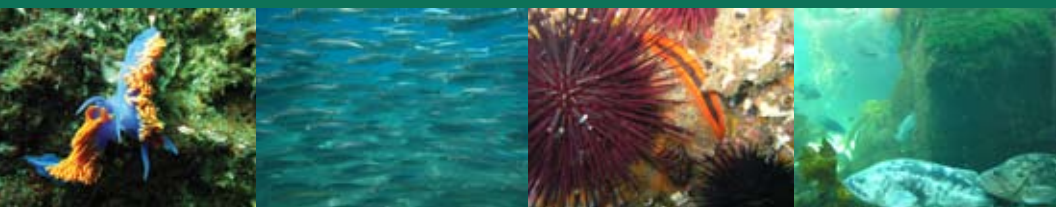


Guide to the Central California Marine Protected Areas

Pigeon Point to Point Conception



Gopher Rockfish, *Sebastes carnatus*

MLPA Contact Information

Fax: (916) 653-8102
Attn: MLPA Initiative

Mail: MLPA Initiative
c/o California Resources Agency
1416 Ninth Street, Suite 1311
Sacramento, CA 95814

E-mail: MLPAComments@resources.ca.gov

Web: www.dfg.ca.gov/mlpa

Public Involvement in the MLPA Initiative

This Initiative was founded on solid public leadership, and seeks the advice of public policy advisors, scientists, stakeholders, and the interested public through a fair and inclusive process. The success of the first phase of the MLPA Initiative was, to a large extent, brought about by the active participation of stakeholders and the general public through the regional stakeholder group, workshops, public meetings, and providing input on documents and MPA plans as they developed. The second phase of the MLPA Initiative will again afford many opportunities for public involvement (see below).

Opportunities for Public Involvement*

- Attend public meetings, or watch them (live or archived) on the Internet
- Add yourself to the mailing list
- Comment on draft public documents
- Send comments (e-mail or written)



* Links to these opportunities can be found at www.dfg.ca.gov/mlpa



Guide to the Central California MPAs

Table of Contents

Marine Life Protection Act (MLPA) Goals	2
MLPA Common Terms and Definitions	3
Frequently Asked Questions.....	4
<i>Maps, Coordinates, Regulations</i>	
Central Coast MPAs (North) - Año Nuevo to Big Creek	6
Central Coast MPAs (South) - Piedras Blancas to Vandenberg.....	7
<i>Individual MPAs, listed north to south</i>	
Año Nuevo SMCA.....	8
Greyhound Rock SMCA	10
Natural Bridges SMR.....	12
Elkhorn Slough SMR	14
Elkhorn Slough SMCA.....	14
Moro Cojo Slough SMR.....	16
Soquel Canyon SMCA.....	18
Portuguese Ledge SMCA.....	20
Edward F. Ricketts SMCA.....	22
Lovers Point SMR.....	24
Pacific Grove Marine Gardens SMCA.....	26
Asilomar SMR.....	28
Carmel Pinnacles SMR	30
Carmel Bay SMCA.....	32
Point Lobos SMR.....	34
Point Lobos SMCA	36
Point Sur SMR.....	38
Point Sur SMCA.....	40
Big Creek SMR.....	42
Big Creek SMCA.....	44
Piedras Blancas SMR.....	46
Piedras Blancas SMCA	48
Cambria SMCA.....	50
White Rock (Cambria) SMCA.....	52
Morro Bay SMR	54
Morro Bay SMRMA.....	56
Point Buchon SMR	58
Point Buchon SMRMA.....	60
Vandenberg SMR	62



Marine Life Protection Act (MLPA) - Goals

California Fish and Game Code Section 2853

- (a) The Legislature finds and declares that there is a need to reexamine and redesign California's MPA system to increase its coherence and its effectiveness at protecting the state's marine life, habitat and ecosystems.
- (b) To improve the design and management of that system, the Commission, pursuant to Section 2859, shall adopt a Marine Life Protection Program which shall have all of the following goals:
1. To protect the natural diversity and abundance of marine life, and the structure, function and integrity of marine ecosystems.
 2. To help sustain, conserve and protect marine life populations, including those of economic value, and rebuild those that are depleted.
 3. To improve recreational, educational, and study opportunities provided by marine ecosystems that are subject to minimal human disturbance, and to manage these uses in a manner consistent with protecting biodiversity.
 4. To protect marine natural heritage, including protection of representative and unique marine life habitats in California waters for their intrinsic value.
 5. To ensure that California's MPAs have clearly defined objectives, effective management measures and adequate enforcement and are based on sound scientific guidelines.
 6. To ensure that the state's MPAs are designed and managed, to the extent possible, as a network.



MLPA Commonly Used Terms & Definitions

Marine Protected Area (MPA)

Named, discrete geographic marine or estuarine area seaward of the mean high tide line or the mouth of a coastal river, including any area of intertidal or subtidal terrain, together with its overlying water and associated flora and fauna that has been designated by law or administrative action to protect or conserve marine life and habitat.

State Marine Reserve (SMR)

The most restrictive classification, these are no-take areas (i.e. extractive activities are prohibited).

State Marine Park (SMP)

May allow recreational take, or limit it in some way, but does NOT allow commercial take.

State Marine Conservation Area (SMCA)

May limit recreational and/or commercial take to protect a specific resource or habitat.

State Marine Recreational Management Area (SMRMA)

A non-terrestrial marine or estuarine area designated so the managing agency may provide, limit, or restrict recreational opportunities to meet other than purely local needs while preserving basic resource values for present and future generations.

Note: Only one State Marine Recreational Management Areas was adopted in the central coast region.



Frequently Asked Questions



How much area was set aside off the central coast as MPAs and how much of that area **will be closed to fishing?**

The adopted regulations include 29 MPAs with varying degrees of protection; these MPAs cover approximately 204 square miles, or about 18%, of state waters within the central coast study region (Pigeon Point to Point Conception). Of the total 29 MPAs, 13 are no-take state marine reserves which represent about 85 of the 204 square miles, or about 7.5% of the study region.

Type of MPA	Area of MPAs on Central Coast (mi ²)	Percent of Central Coast Waters
SMR	85.34	7.42%
SMP*	6.35	0.55%
SMCA	112.19	9.76%
Total	203.88	17.73%

How will the MLPA be **implemented across the state?**

Implementation has been split into five (5) distinct study regions that when completed will have assessed all state waters. The study regions are:



- North Coast: Oregon/CA border to Point Arena/Alder Creek
- North-Central Coast: Alder Creek/Point Arena to Pigeon Point (assessment started summer 2007)
- San Francisco Bay
- Central Coast: Pigeon Point to Point Conception (Implemented 9/21/07)
- South Coast: Point Conception to CA/Mexico border



Can I travel through or anchor in an MPA with catch onboard?

Yes, transit and anchoring are allowed. The language is found in Section 632 (a)(7) and (8), Title 14, California Code of Regulations:



(7) **Anchoring.** Vessels shall be allowed to anchor in any marine protected area or marine managed area with catch onboard unless otherwise specified in sub-section 632(b), areas and special regulations for use. Fishing gear shall not be deployed in the water while anchored in a state marine reserve. Fishing gear, except legal fishing gear used to take species identified as allowed for take in sub-section 632(b), shall not be deployed in the water while anchored in a state marine recreational management area, state marine park or state marine conservation area. Anchoring regulations shall be consistent with federal law and allowances made for anchoring required by emergency or severe weather.

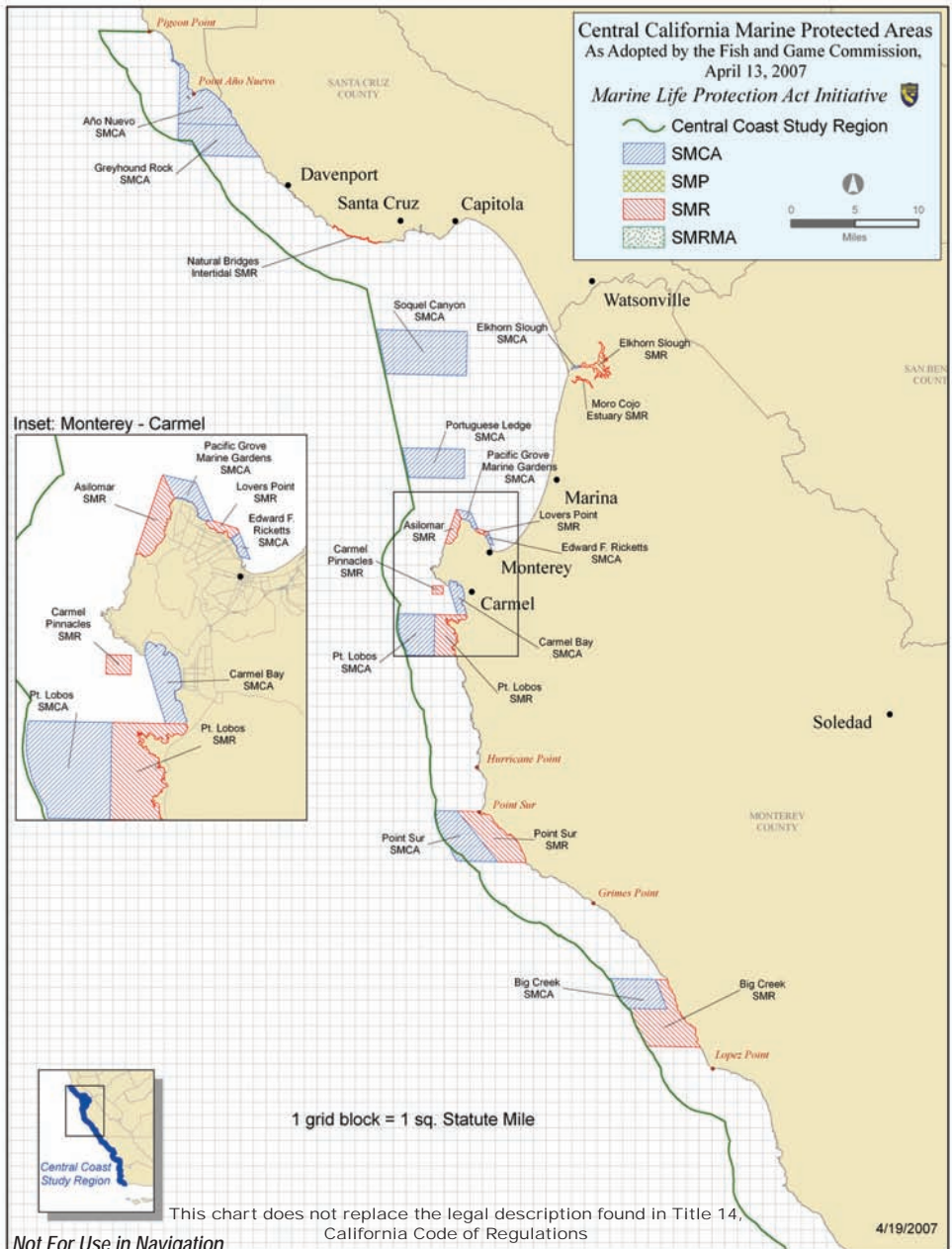
(8) **Transit or Drifting.** Vessels shall be allowed to transit through marine protected areas and marine managed areas with catch onboard. Fishing gear shall not be deployed in the water while transiting through a state marine reserve. Fishing gear, except legal fishing gear used to take species identified as allowed for take in sub-section 632(b), shall not be deployed in the water while transiting through a state marine recreational management area, state marine park or state marine conservation area.

*A Note about Elkhorn Slough and Cambria SMCAs...

In order to designate a State Marine Park, California State Parks requires another regulatory process in addition to that of the Fish and Game Commission. Elkhorn Slough SMCA and Cambria SMCA were both designed as SMPs but were adopted as SMCAs, and will be converted to SMPs in a separate action.



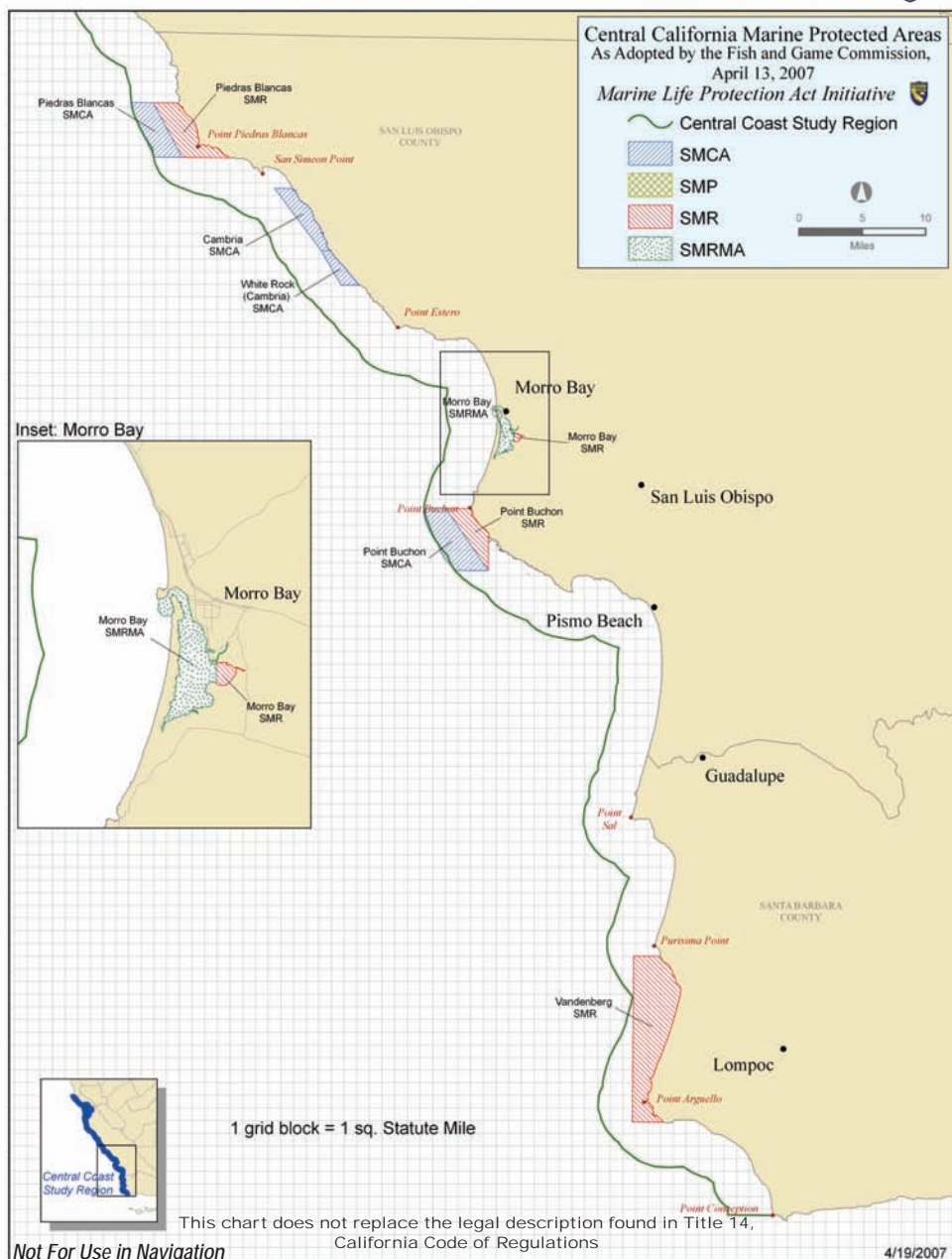
Central Coast MPAs (North) - Año Nuevo to Big Creek



SMCA = state marine conservation area SMP = state marine park
SMR = state marine reserve SMRMA = state marine recreational management area



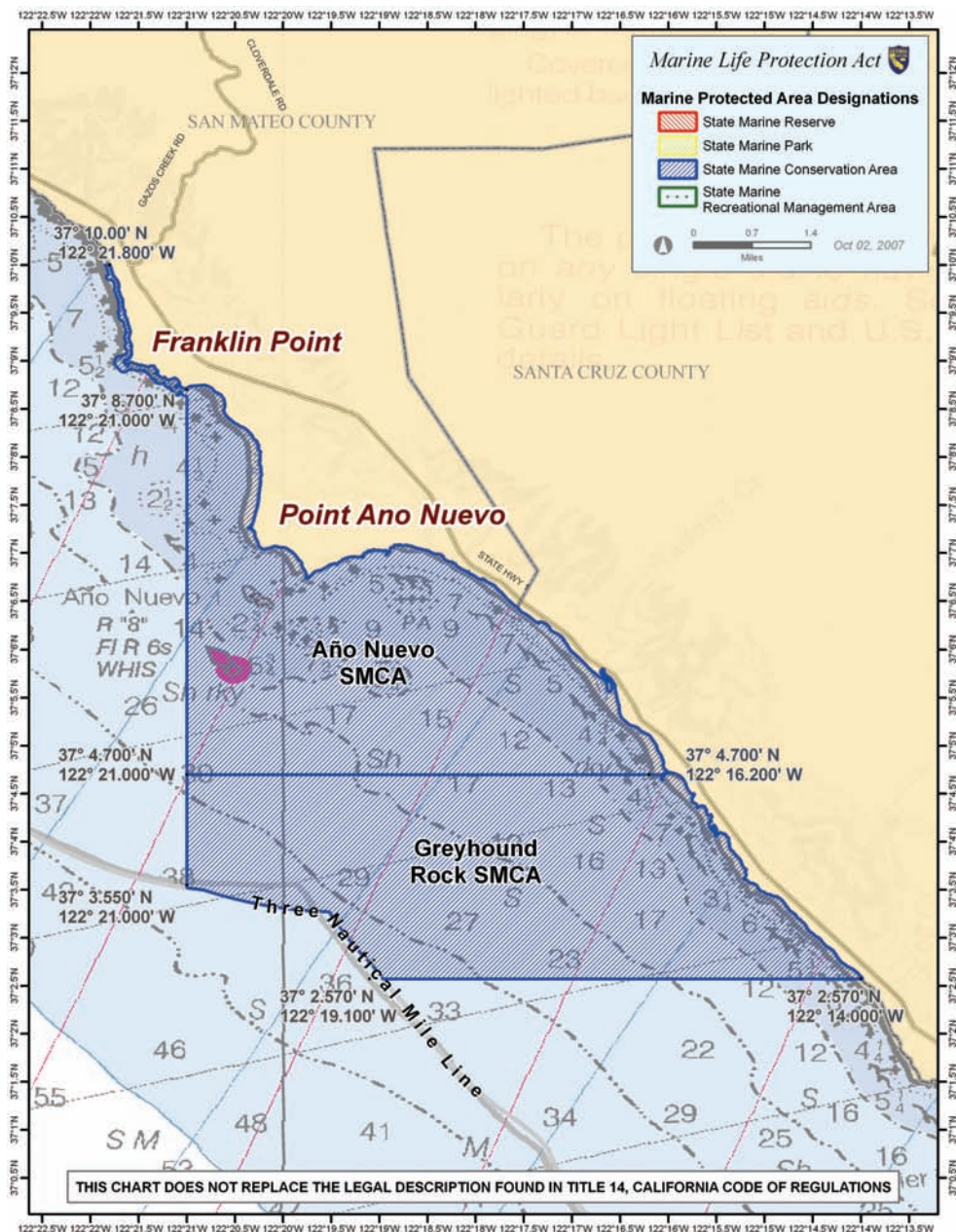
Central Coast MPAs (South) - Piedras Blancas to Vandenberg



SMCA = state marine conservation area SMP = state marine park
SMR = state marine reserve SMRMA = state marine recreational management area



Año Nuevo State Marine Conservation Area



Not For Use in Navigation



Boundary and Regulations - Año Nuevo SMCA from California Code of Regulations, Title 14 Section 632, sub-section (b)(27)

(A) Boundary:

This area is bounded by the mean high tide line and a distance of 200 feet seaward of mean lower low water between the following two points:

37° 10.00' N. lat. 122° 21.80' W. long.; and
37° 08.70' N. lat. 122° 21.00' W. long.

The area then continues southward bounded by the mean high tide line and straight lines connecting the following points in the order listed:

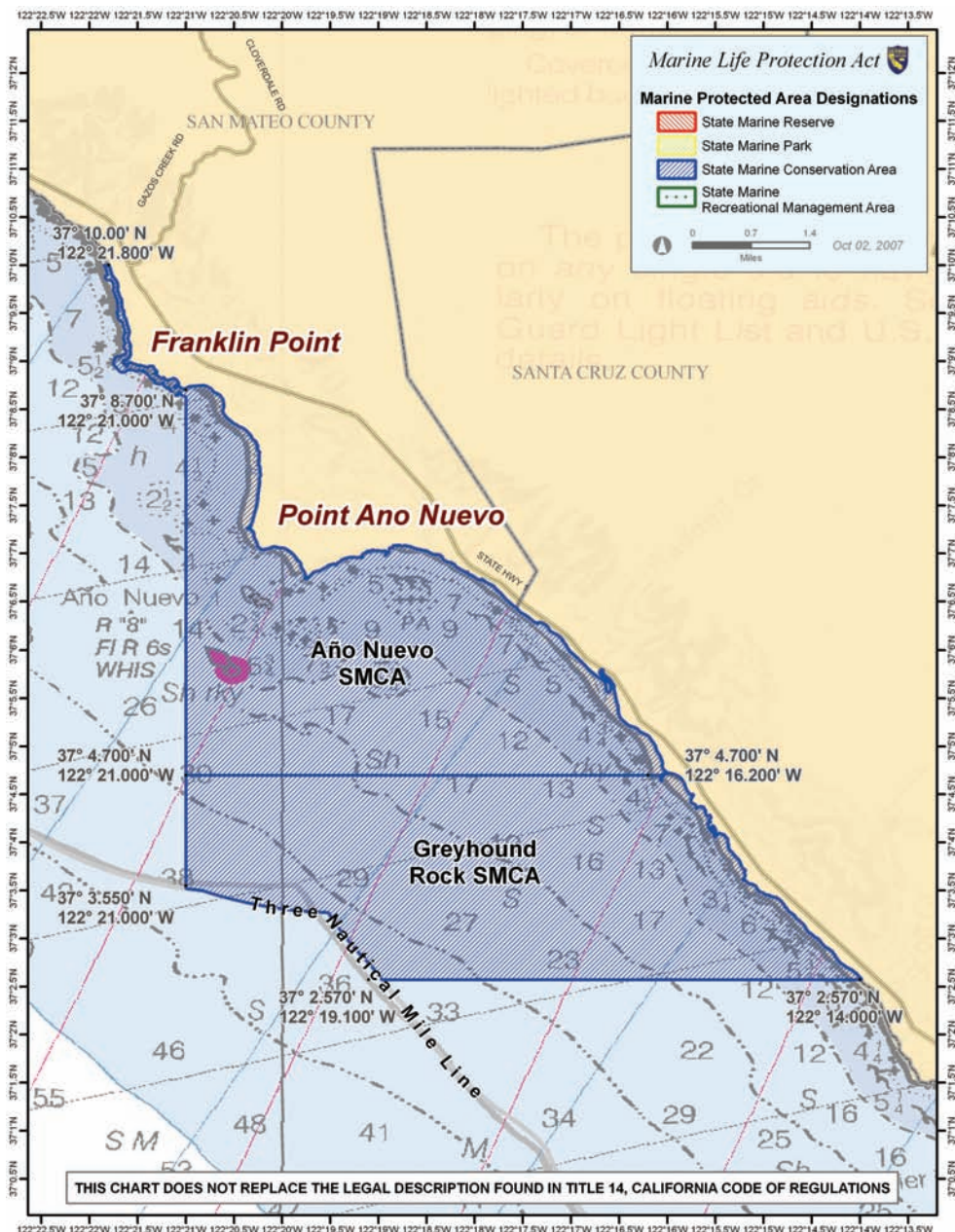
37° 08.70' N. lat. 122° 21.00' W. long.;
37° 04.70' N. lat. 122° 21.00' W. long.; and
37° 04.70' N. lat. 122° 16.20' W. long.

(B) Permitted/Prohibited Uses:

Take of all living marine resources is prohibited except the commercial take of giant kelp (*Macrocystis pyrifera*) by hand harvest only.



Greyhound Rock State Marine Conservation Area



Not For Use in Navigation



Boundary and Regulations - Greyhound Rock SMCA from California Code of Regulations, Title 14 Section 632, sub-section (b)(28)

(A) Boundary:

This area is bounded by the mean high tide line, the three nautical mile offshore boundary and straight lines connecting the following points in the order listed except where noted:

37° 04.70' N. lat. 122° 16.20' W. long.;
37° 04.70' N. lat. 122° 21.00' W. long.;
37° 03.55' N. lat. 122° 21.00' W. long.; thence southward along the
three nautical mile offshore boundary to
37° 02.57' N. lat. 122° 19.10' W. long.; and
37° 02.57' N. lat. 122° 14.00' W. long

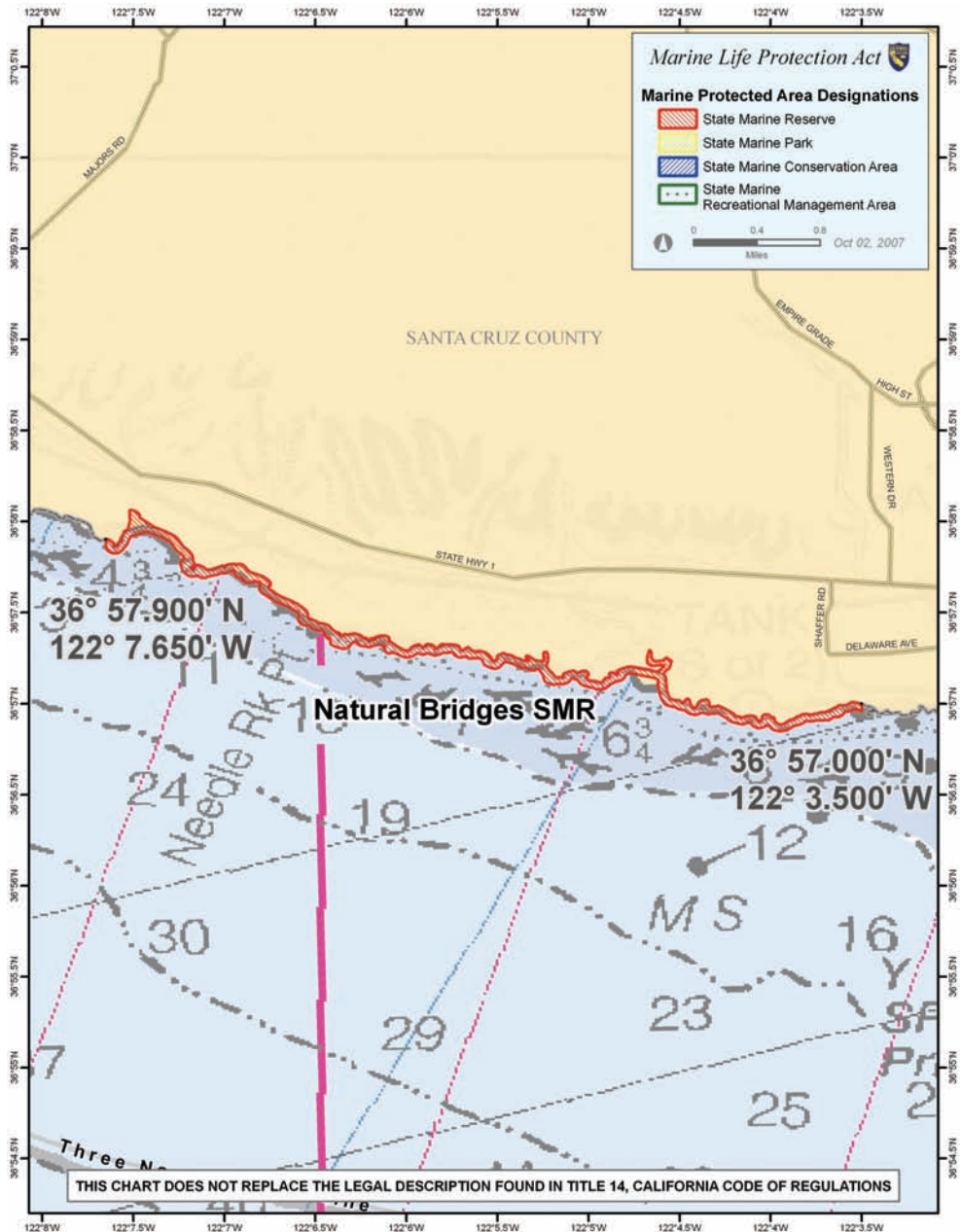
(B) Permitted/Prohibited Uses:

Take of all living marine resources is prohibited except:

1. Only the following species may be taken recreationally: giant kelp (*Macrocystis pyrifera*) by hand harvest only, squid, salmon, and, by hook-and-line from shore only, other finfish.
2. Only the following species may be taken commercially: giant kelp (*Macrocystis pyrifera*) by hand harvest only, salmon, and squid except that not more than five percent (5%) by landed weight of any commercial squid catch may be other species taken incidentally to squid.



Natural Bridges State Marine Reserve



Not For Use in Navigation



Boundary and Regulations - Natural Bridges SMR *from California Code of Regulations, Title 14* **Section 632, sub-section (b)(29)**

(A) Boundary:

This area is bounded by the mean high tide line and a distance of 200 feet seaward of mean lower low water between the following two points:

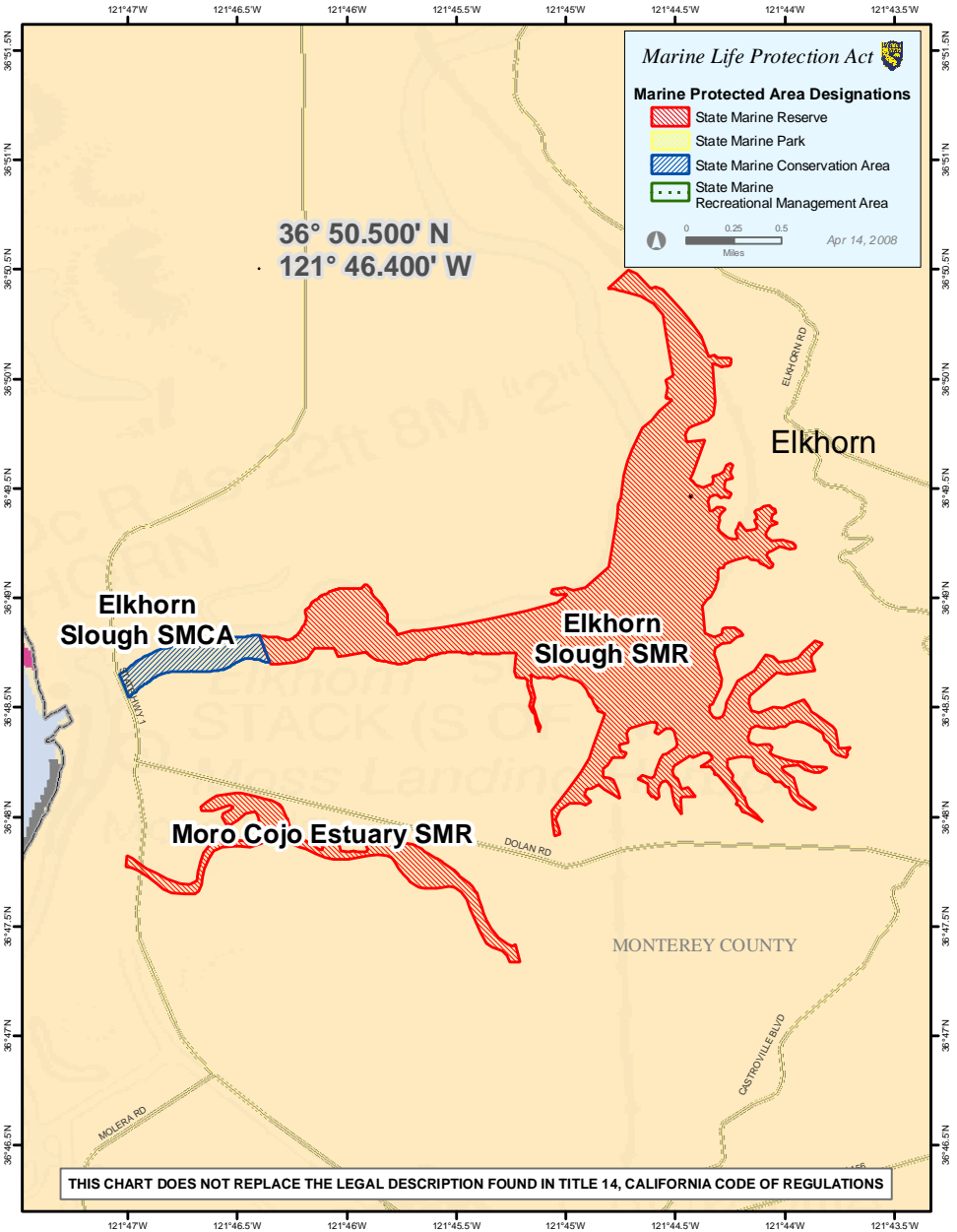
36° 57.90' N. lat. 122° 07.65' W. long.; and
36° 57.00' N. lat. 122° 03.50' W. long.

(B) Permitted/Prohibited Uses:

Take of all living marine resources is prohibited.



Elkhorn Slough State Marine Reserve Elkhorn Slough State Marine Conservation Area



Not For Use in Navigation



Boundary and Regulations - Elkhorn Slough SMR from California Code of Regulations, Title 14 Section 632, sub-section (b)(30)

(A) Boundary

This area includes the waters below mean high tide within Elkhorn Slough lying

east of longitude 121° 46.40' W. and
south of latitude 36° 50.50' N.

(B) Permitted/Prohibited Uses

Take of all living marine resources is prohibited.

During 2008, adjustments to Elkhorn Slough SMR boundaries were under California Fish and Game Commission consideration. It is expected that the Commission will make its final decision on updated boundaries at its November 2008 meeting. Please check the California Department of Fish and Game web site at www.dfg.ca.gov/mlpa following the meeting to verify the correct boundary information.

Boundary and Regulations - Elkhorn Slough SMCA from California Code of Regulations, Title 14 Section 632, sub-section (b)(31)

(A) Boundary

This area includes the waters below mean high tide within Elkhorn Slough east of the Highway 1 Bridge and west of longitude 121° 46.40' W.

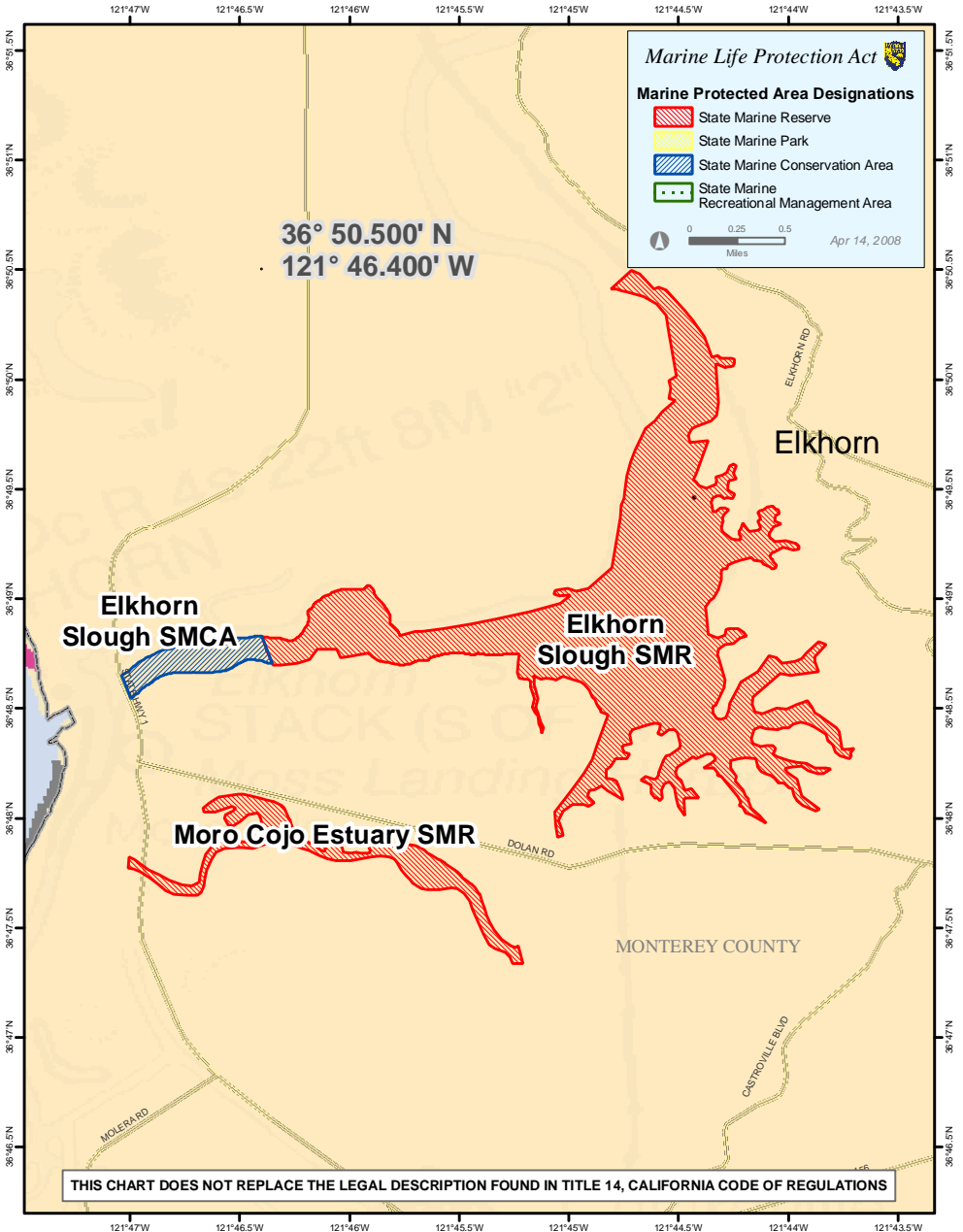
(B) Permitted/Prohibited Uses

Take of all living marine resources is prohibited except:

1. Only the following species may be taken recreationally: finfish by hook-and-line only and clams. Clams may only be taken on the north shore of the slough in the area adjacent to the Moss Landing State Wildlife Area [sub-section 550(a)].



Moro Cojo Estuary State Marine Reserve



Not For Use in Navigation



Boundary and Regulations - Moro Cojo Estuary SMR from California Code of Regulations, Title 14 Section 632, sub-section (b)(32)

(A) Boundary

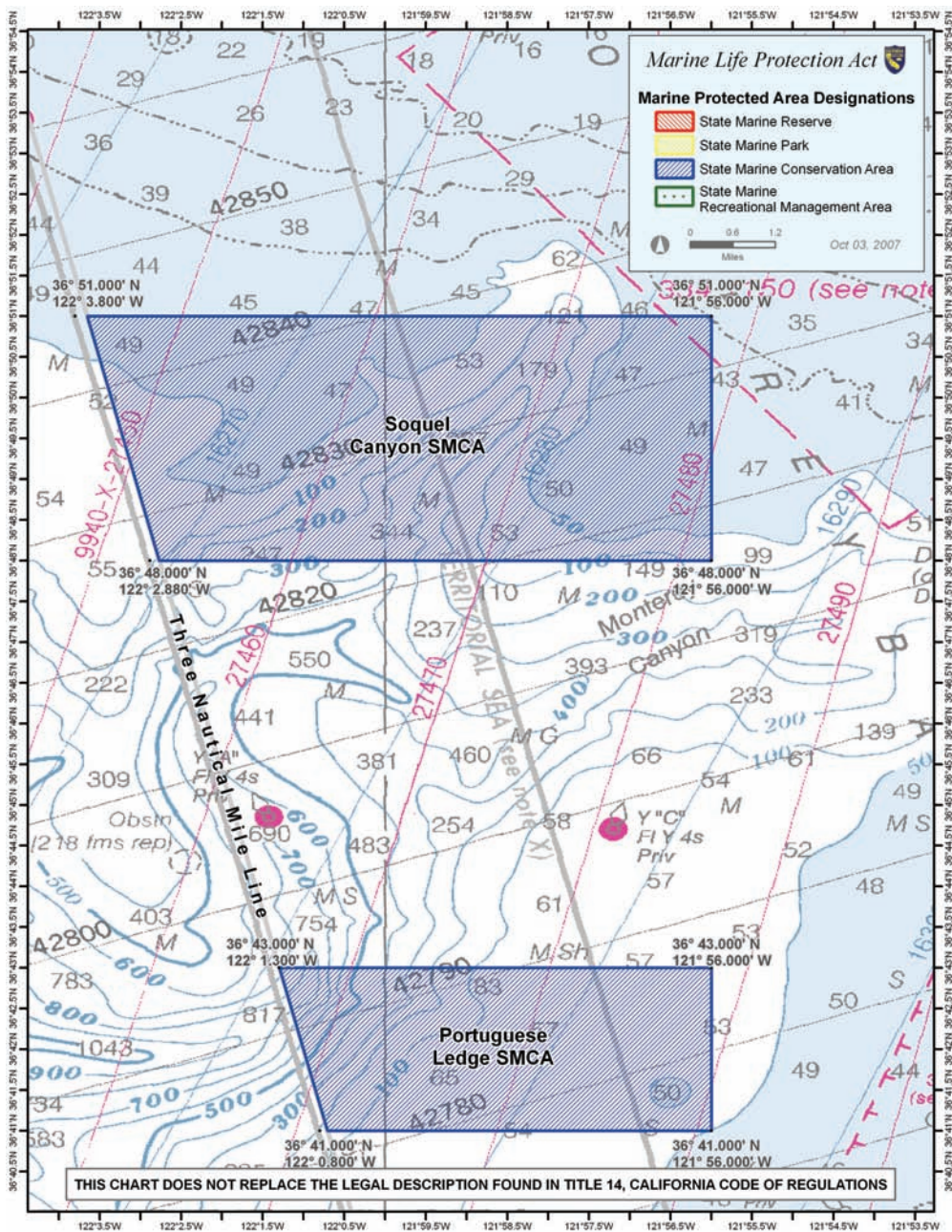
This area includes the waters within Moro Cojo Slough below mean high tide and east of the Highway 1 Bridge and west of the crossing of the Southern Pacific railroad tracks.

(B) Permitted/Prohibited Uses

Take of all living marine resources is prohibited.



Sequel Canyon State Marine Conservation Area



Not For Use in Navigation



Boundary and Regulations - Soquel Canyon SMCA from California Code of Regulations, Title 14 Section 632, sub-section (b)(33)

(A) Boundary

This area is bounded by straight lines connecting the following points in the order listed:

36° 51.00' N. lat. 121° 56.00' W. long.;
36° 51.00' N. lat. 122° 03.80' W. long.;
36° 48.00' N. lat. 122° 02.88' W. long.;
36° 48.00' N. lat. 121° 56.00' W. long.; and
36° 51.00' N. lat. 121° 56.00' W. long.

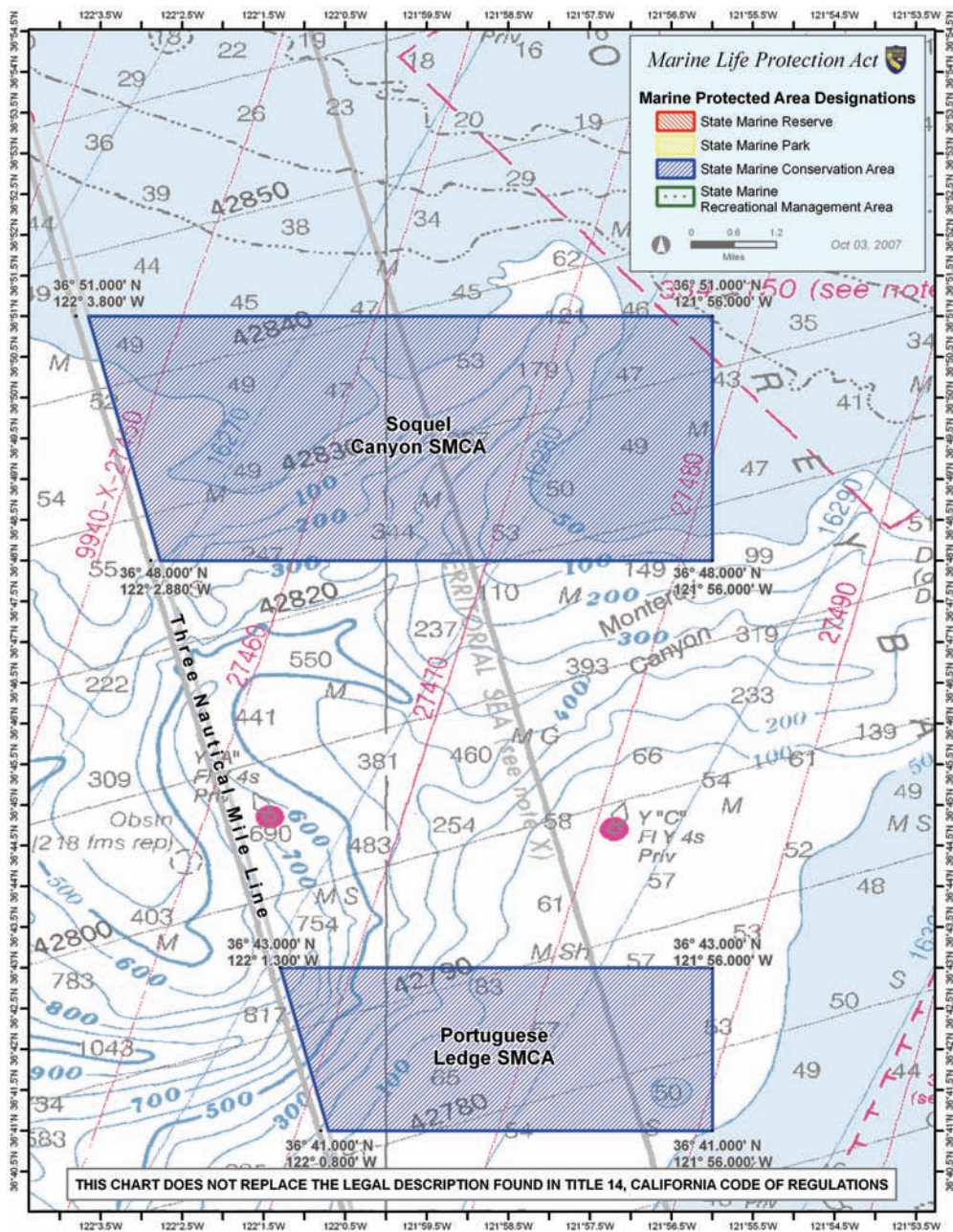
(B) Permitted/Prohibited Uses

Take of all living marine resources is prohibited except the commercial and recreational take of pelagic finfish* [sub-section 632(a)(3)].

*Pelagic finfish, for the purposes of this guidebook, are defined as: northern anchovy (*Engraulis mordax*), barracudas (*Sphyraena* spp.) billfishes (family Istiophoriade), dolphinfish (*Coryphaena hippurus*), Pacific herring (*Clupea pallasii*), jack mackerel (*Trachurus symmetricus*), Pacific mackerel (*Scomber japonicus*), salmon (*Oncorhynchus* spp.), Pacific sardine (*Sardinops sagax*), blue shark (*Prionace glauca*), salmon shark (*Lamna ditropis*), shortfin mako shark (*Isurus oxyrinchus*), thresher sharks (*Alopias* spp.), swordfish (*Xiphias gladius*), tunas (family Scombridae), and yellowtail (*Seriola lalandi*).



Portuguese Ledge State Marine Conservation Area



Not For Use in Navigation



Boundary and Regulations - Portuguese Ledge SMCA from California Code of Regulations, Title 14 Section 632, sub-section (b)(34)

(A) Boundary

This area is bounded by straight lines connecting the following points in the order listed:

36° 43.00' N. lat. 121° 56.00' W. long.;
36° 43.00' N. lat. 122° 01.30' W. long.;
36° 41.00' N. lat. 122° 00.80' W. long.;
36° 41.00' N. lat. 121° 56.00' W. long.; and
36° 43.00' N. lat. 121° 56.00' W. long.

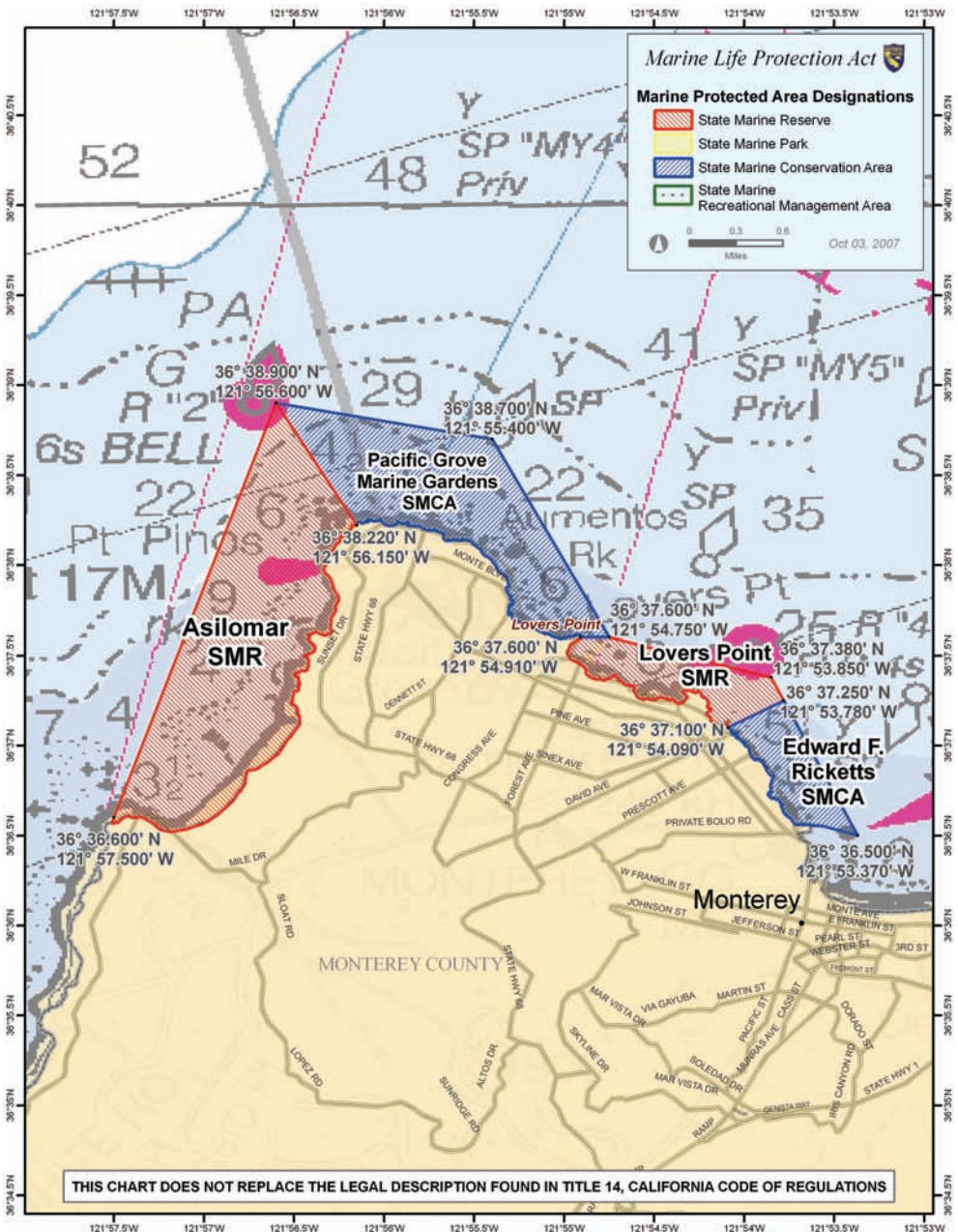
(B) Permitted/Prohibited Uses

Take of all living marine resources is prohibited except the commercial and recreational take of pelagic finfish*. [sub-section 632(a)(3)].

*Pelagic finfish, for the purpose of this guidebook, are defined as: northern anchovy (*Engraulis mordax*), barracudas (*Sphyraena* spp.) billfishes (family Istiophoridae), dolphinfish (*Coryphaena hippurus*), Pacific herring (*Clupea pallasii*), jack mackerel (*Trachurus symmetricus*), Pacific mackerel (*Scomber japonicus*), salmon (*Oncorhynchus* spp.), Pacific sardine (*Sardinops sagax*), blue shark (*Prionace glauca*), salmon shark (*Lamna ditropis*), shortfin mako shark (*Isurus oxyrinchus*), thresher sharks (*Alopias* spp.), swordfish (*Xiphias gladius*), tunas (family Scombridae), and yellowtail (*Seriola lalandi*).



Edward F. Ricketts State Marine Conservation Area



Not For Use in Navigation



Boundary and Regulations - Edward F. Ricketts SMCA from California Code of Regulations, Title 14 Section 632, sub-section (b)(35)

(A) Boundary

This area is bounded by the mean high tide line and straight lines connecting the following points in the order listed:

36° 36.50' N. lat. 121° 53.37' W. long.;
36° 37.25' N. lat. 121° 53.78' W. long.; and
36° 37.10' N. lat. 121° 54.09' W. long.

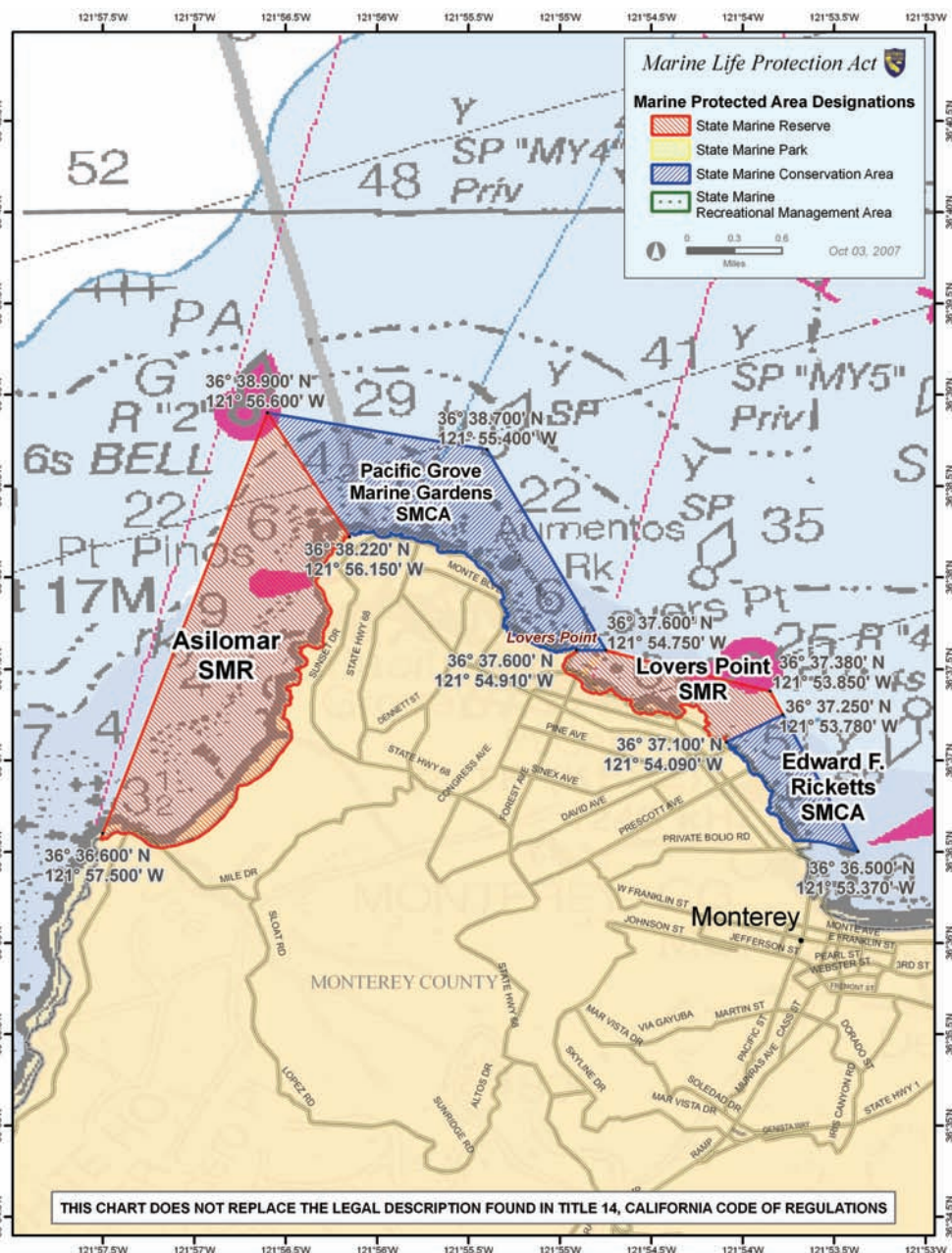
(B) Permitted/Prohibited Uses

Take of all living marine resources is prohibited except:

1. The recreational take of finfish by hook-and-line is allowed.
2. The commercial take of giant kelp (*Macrocystis pyrifera*) and bull kelp (*Nereocystis* spp.) is allowed by hand in the area defined by sub-section 165(c)(4)(D) under the following conditions:
 - a. A kelp harvester with a valid license issued pursuant to Section 165 may take no more than 12 tons of kelp from the portion of Administrative Kelp Bed 220 within the Edward F. Ricketts State Marine Conservation Area in any calendar month.
 - b. Duplicate landing records must be kept on board the harvest vessel in accordance with the requirements of Section 165.



Lovers Point State Marine Reserve



Not For Use in Navigation



Boundary and Regulations - Lovers Point SMR from California Code of Regulations, Title 14 Section 632, sub-section (b)(36)

(A) Boundary

This area is bounded by the mean high tide line, and straight lines connecting the following points in the order listed:

36° 37.10' N. lat. 121° 54.09' W. long.;

36° 37.25' N. lat. 121° 53.78' W. long.;

36° 37.38' N. lat. 121° 53.85' W. long.;

36° 37.60' N. lat. 121° 54.75' W. long.; and

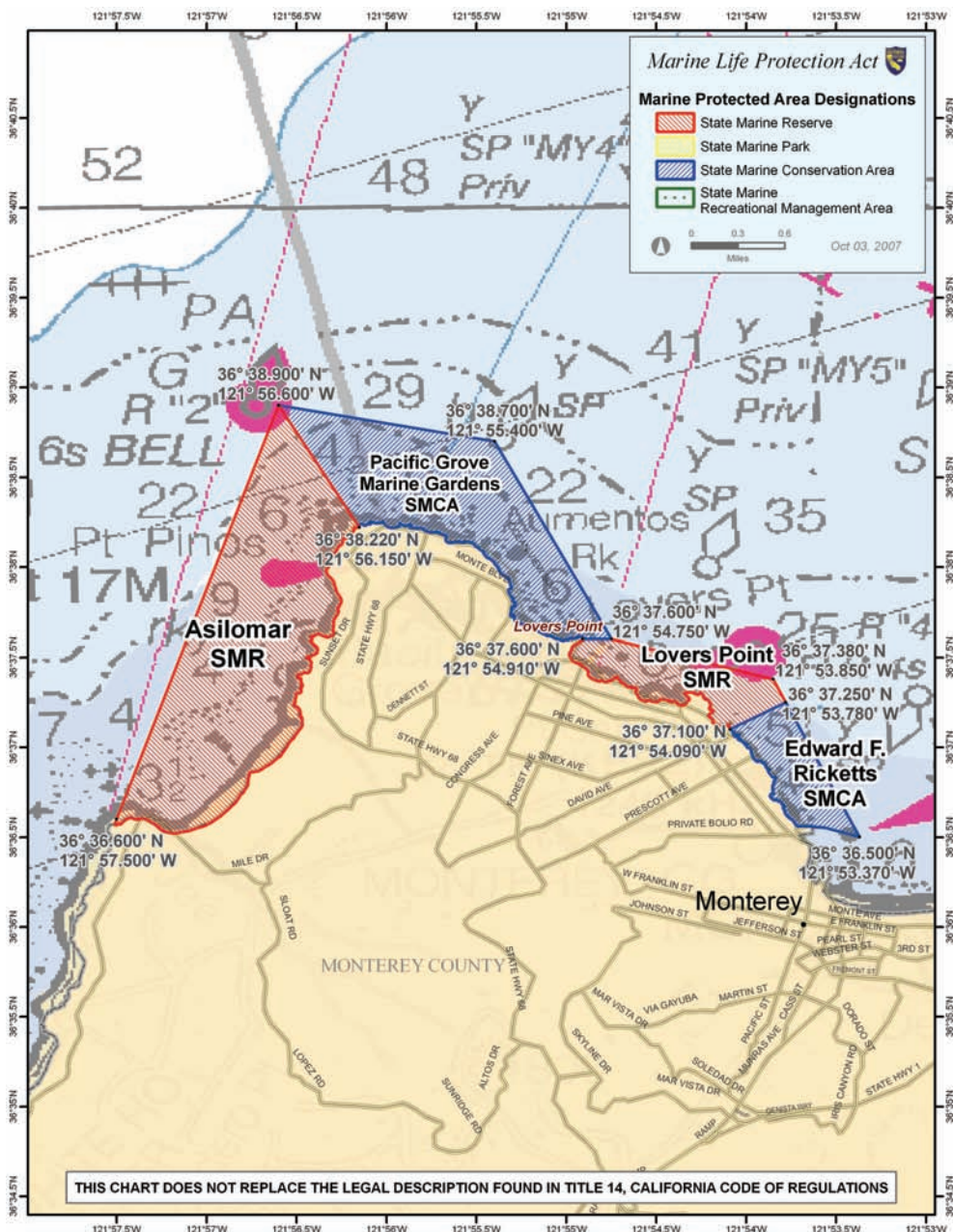
36° 37.60' N. lat. 121° 54.91' W. long.

(B) Permitted/Prohibited Uses

Take of all living marine resources is prohibited.



Pacific Grove Marine Gardens State Marine Conservation Area



Not For Use in Navigation



Boundary and Regulations

Pacific Grove Marine Gardens SMCA

from California Code of Regulations, Title 14
Section 632, sub-section (b)(37)

(A) Boundary

This area is bounded by the mean high tide line, and straight lines connecting the following points in the order listed:

36° 37.60' N. lat. 121° 54.91' W. long.;
36° 37.60' N. lat. 121° 54.75' W. long.;
36° 38.70' N. lat. 121° 55.40' W. long.;
36° 38.90' N. lat. 121° 56.60' W. long.; and
36° 38.22' N. lat. 121° 56.15' W. long.

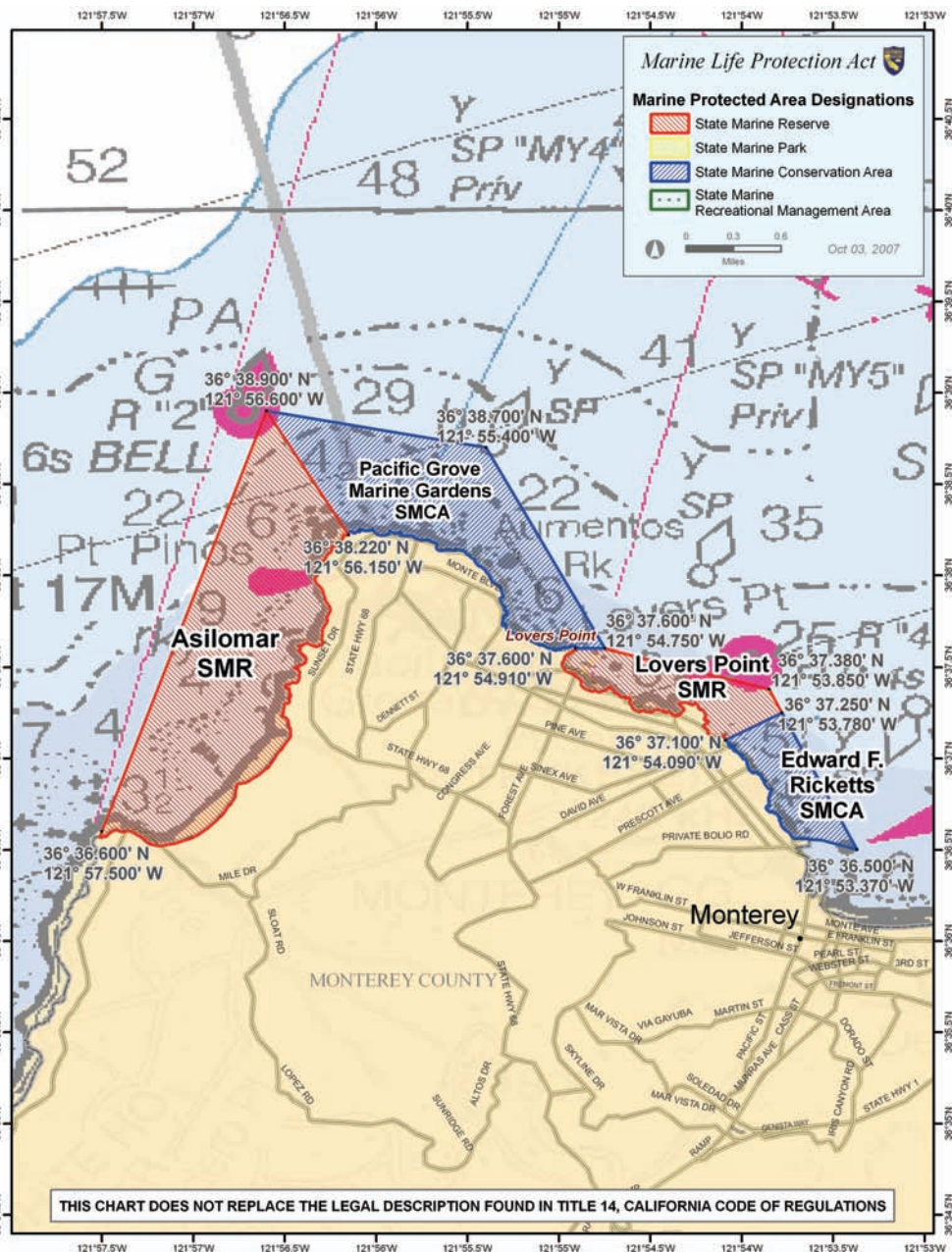
(B) Permitted/Prohibited Uses

Take of all living marine resources is prohibited except:

1. The recreational take of finfish is allowed.
2. The commercial take of giant kelp (*Macrocystis pyrifera*) and bull kelp (*Nereocystis* spp.) by hand is allowed under the following conditions:
 - a. A kelp harvester with a valid license issued pursuant to Section 165 may take no more than 44 tons of kelp from the portion of Administrative Kelp Bed 220 within the Pacific Grove Marine Gardens State Marine Conservation Area in any calendar month.
 - b. Duplicate landing records must be kept on board the harvest vessel in accordance with the requirements of Section 165.



Asilomar State Marine Reserve



Not For Use in Navigation



Boundary and Regulations - Asilomar SMR *from California Code of Regulations, Title 14* **Section 632, sub-section (b)(38)**

(A) Boundary

This area is bounded by the mean high tide line and straight lines connecting the following points in the order listed:

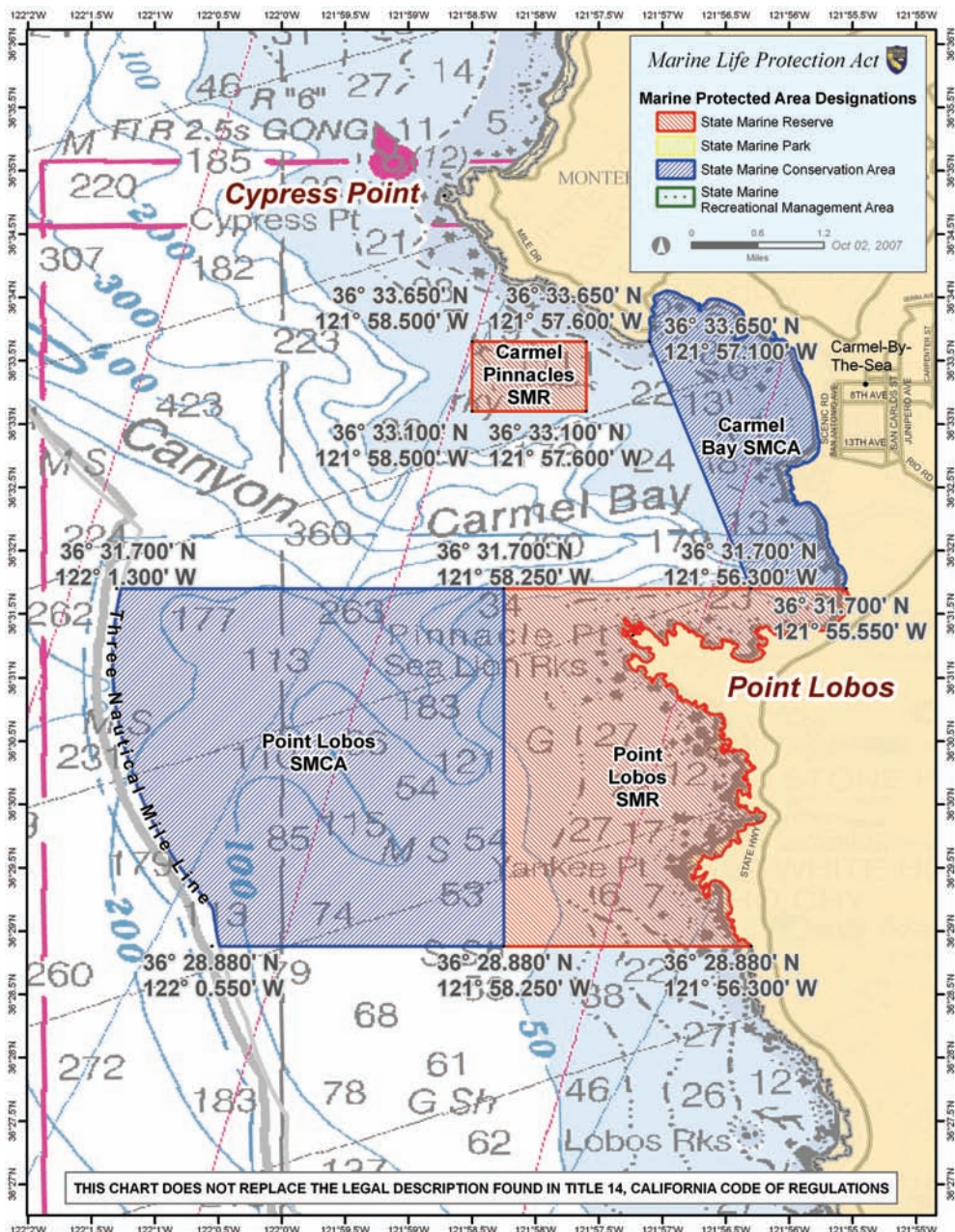
36° 38.22' N. lat. 121° 56.15' W. long.;
36° 38.90' N. lat. 121° 56.60' W. long.; and
36° 36.60' N. lat. 121° 57.50' W. long.

(B) Permitted/Prohibited Uses

Take of all living marine resources is prohibited.



Carmel Pinnacles State Marine Reserve



Not For Use in Navigation



Boundary and Regulations - Carmel Pinnacles SMR from California Code of Regulations, Title 14 Section 632, sub-section (b)(39)

(A) Boundary

This area is bounded by the mean high tide line and straight lines connecting the following points in the order listed:

36° 33.65' N. lat. 121° 57.60' W. long.;

36° 33.65' N. lat. 121° 58.50' W. long.;

36° 33.10' N. lat. 121° 58.50' W. long.;

36° 33.10' N. lat. 121° 57.60' W. long.; and

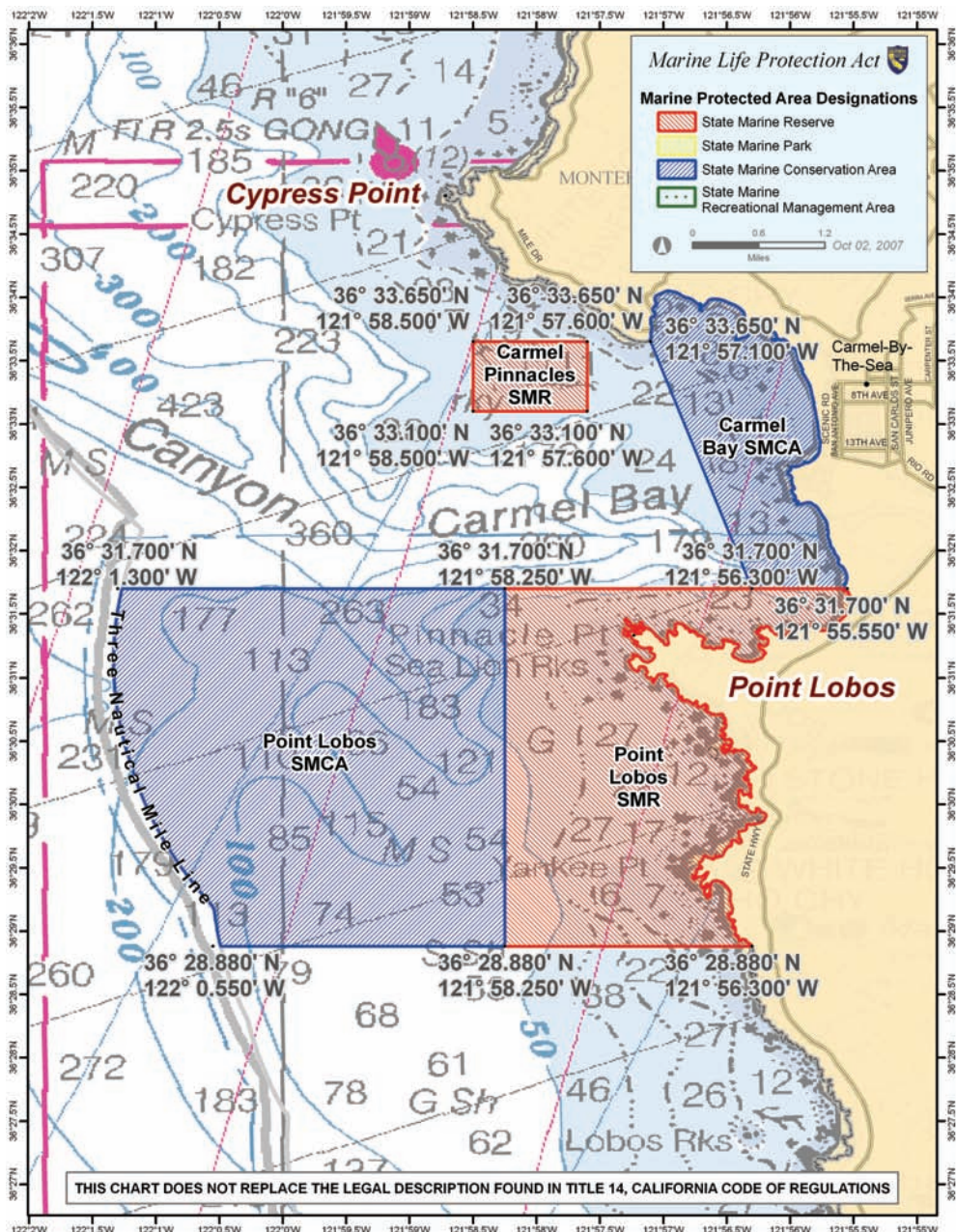
36° 33.65' N. lat. 121° 57.60' W. long.

(B) Permitted/Prohibited Uses

Take of all living marine resources is prohibited.



Carmel Bay State Marine Conservation Area



Not For Use in Navigation



Boundary and Regulations - Carmel Bay SMCA *from California Code of Regulations, Title 14* **Section 632, sub-section (b)(40)**

(A) Boundary

This area is bounded by the mean high tide line and straight lines connecting the following points in the order listed:

36° 33.65' N. lat. 121° 57.10' W. long.;
36° 31.70' N. lat. 121° 56.30' W. long.; and
36° 31.70' N. lat. 121° 55.55' W. long.

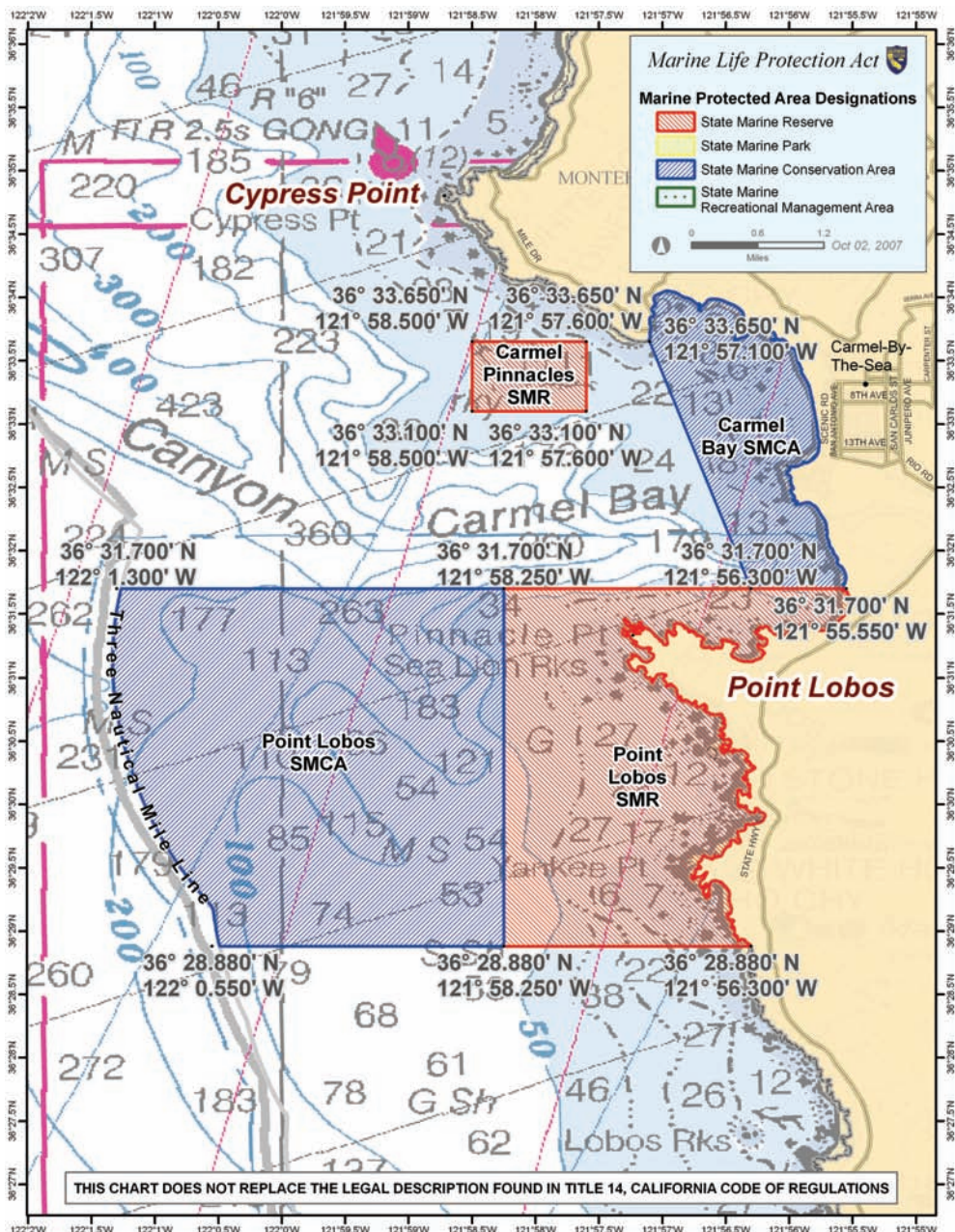
(B) Permitted/Prohibited Uses

Take of all living marine resources is prohibited except:

1. The recreational take of finfish is allowed.
2. The commercial take of giant kelp (*Macrocystis pyrifera*) and bull kelp (*Nereocystis* spp.) by hand is allowed under the following conditions:
 - a. A kelp harvester with a valid license issued pursuant to Section 165 may take no more than 44 tons of kelp from the portion of Administrative Kelp Bed 219 within the Carmel Bay State Marine Conservation Area in any calendar month.
 - b. Duplicate landing records must be kept on board the harvest vessel in accordance with the requirements of Section 165.



Point Lobos State Marine Reserve



Not For Use in Navigation



Boundary and Regulations - Point Lobos SMR from California Code of Regulations, Title 14 Section 632, sub-section (b)(41)

(A) Boundary

This area is bounded by the mean high tide line and straight lines connecting the following points in the order listed:

36° 31.70' N. lat. 121° 55.55' W. long.;

36° 31.70' N. lat. 121° 58.25' W. long.;

36° 28.88' N. lat. 121° 58.25' W. long.; and

36° 28.88' N. lat. 121° 56.30' W. long.

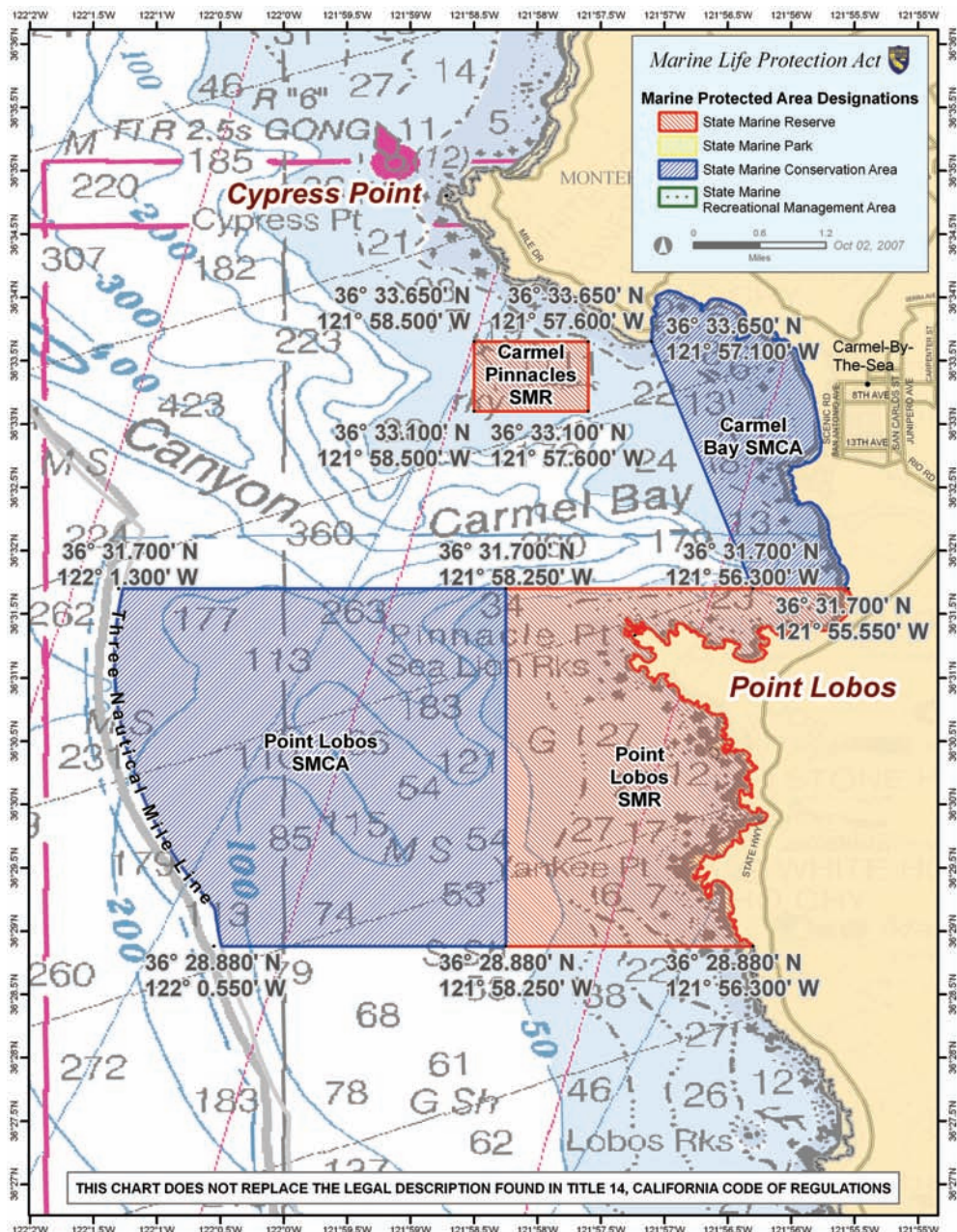
(B) Permitted/Prohibited Uses

Take of all living marine resources is prohibited.

(C) Within the portion of the Point Lobos State Marine Reserve which also falls within the boundary of the Point Lobos State Reserve (State Park Unit), restrictions on boating and diving activities exist. Contact the California Department of Parks and Recreation for current restrictions.



Point Lobos State Marine Conservation Area



Not For Use in Navigation



Boundary and Regulations - Point Lobos SMCA *from California Code of Regulations, Title 14* **Section 632, sub-section (b)(42)**

(A) Boundary

This area is bounded by straight lines connecting the following points in the order listed except where noted:

36° 31.70' N. lat. 121° 58.25' W. long.;

36° 31.70' N. lat. 122° 01.30' W. long.; thence southward along the three nautical mile offshore boundary to

36° 28.88' N. lat. 122° 00.55' W. long.;

36° 28.88' N. lat. 121° 58.25' W. long.; and

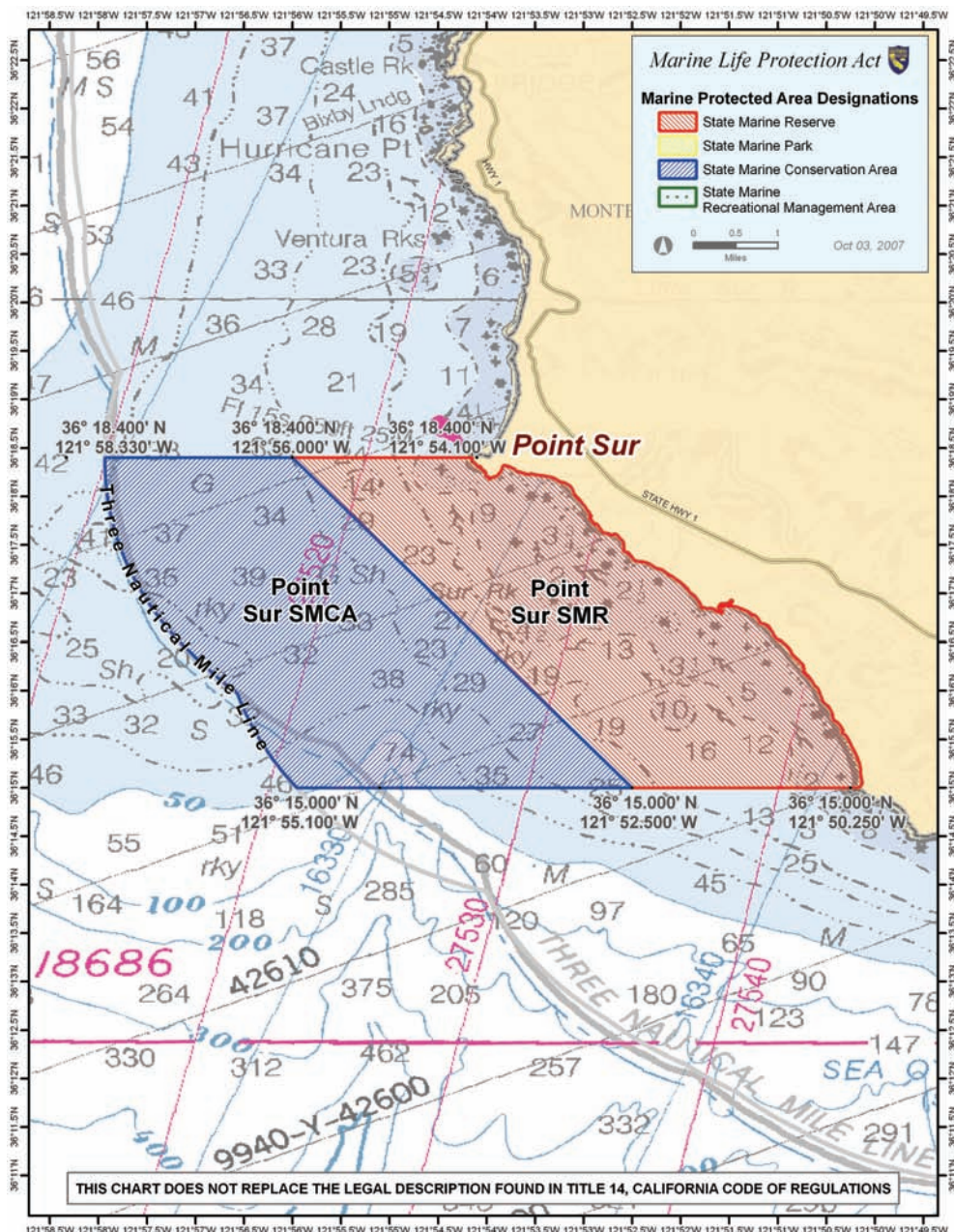
36° 31.70' N. lat. 121° 58.25' W. long.

(B) Permitted/Prohibited Uses

Take of all living marine resources is prohibited except the recreational and commercial take of salmon, albacore, and the commercial take of spot prawn.



Point Sur State Marine Reserve



Not For Use in Navigation



Boundary and Regulations - Point Sur SMR from California Code of Regulations, Title 14 Section 632, sub-section (b)(43)

(A) Boundary

This area is bounded by the mean high tide line and straight lines connecting the following points in the order listed:

36° 18.40' N. lat. 121° 54.10' W. long.;

36° 18.40' N. lat. 121° 56.00' W. long.;

36° 15.00' N. lat. 121° 52.50' W. long.; and

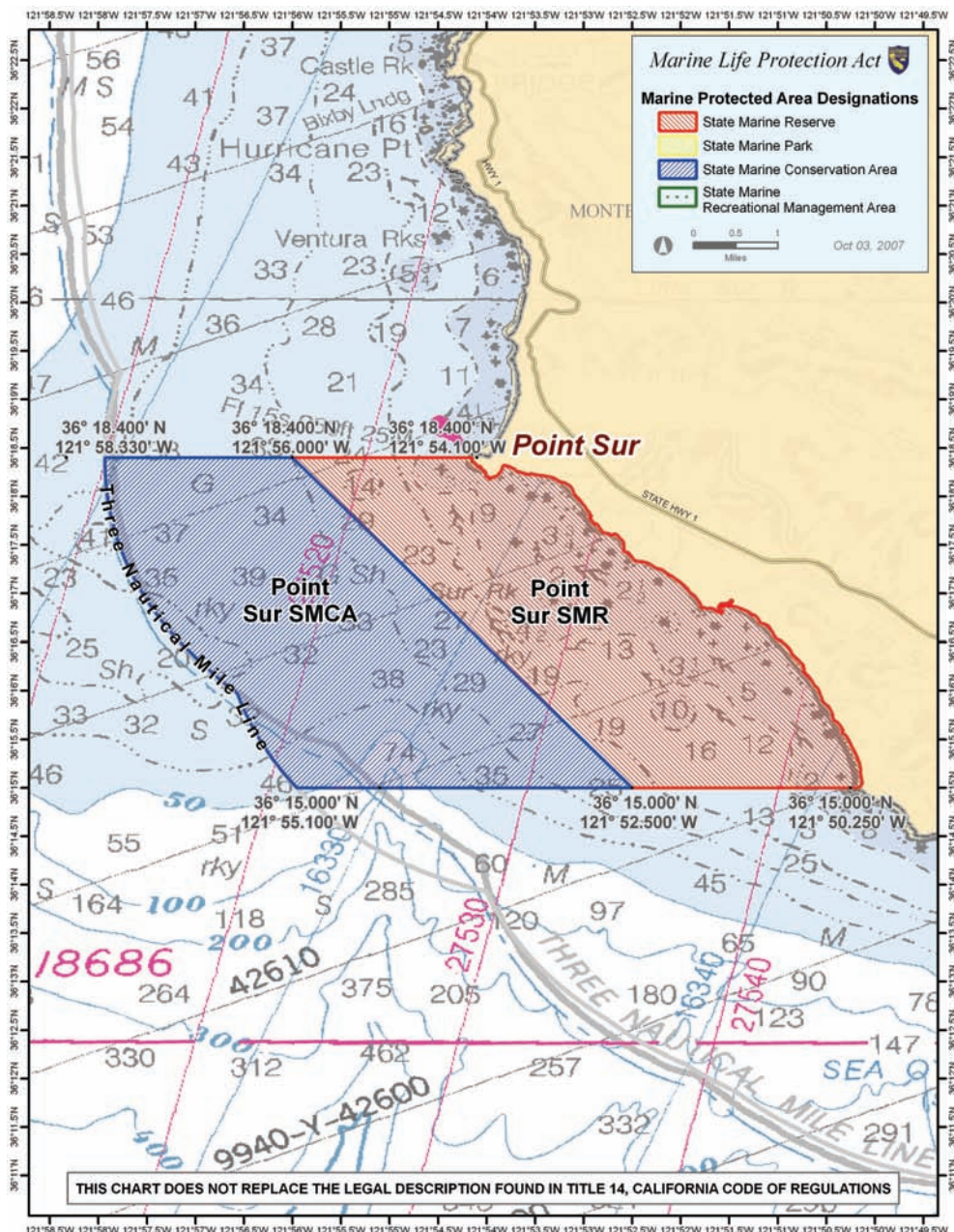
36° 15.00' N. lat. 121° 50.25' W. long.

(B) Permitted/Prohibited Uses

Take of all living marine resources is prohibited.



Point Sur State Marine Conservation Area



Not For Use in Navigation



Boundary and Regulations - Point Sur SMCA from California Code of Regulations, Title 14 Section 632, sub-section (b)(44)

(A) Boundary

This area is bounded by the mean high tide line and straight lines connecting the following points in the order listed except where noted:

36° 18.40' N. lat. 121° 56.00' W. long.;

36° 18.40' N. lat. 121° 58.33' W. long.; thence southward along the three nautical mile offshore boundary to

36° 15.00' N. lat. 121° 55.10' W. long.;

36° 15.00' N. lat. 121° 52.50' W. long.; and

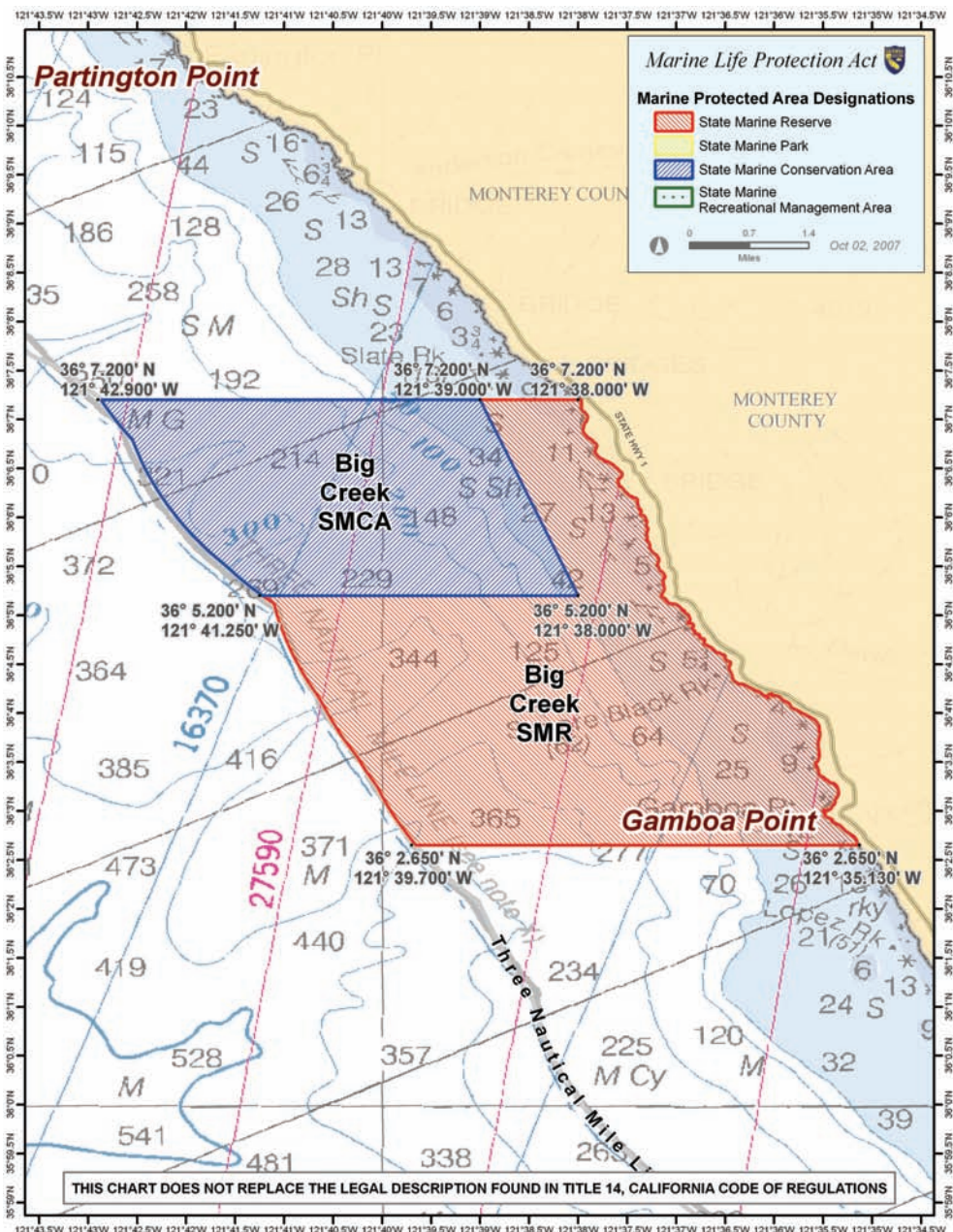
36° 18.40' N. lat. 121° 56.00' W. long.

(B) Permitted/Prohibited Uses

Take of all living marine resources is prohibited except the commercial and recreational take of salmon and albacore.



Big Creek State Marine Reserve



Not For Use in Navigation



Boundary and Regulations - Big Creek SMR from California Code of Regulations, Title 14 Section 632, sub-section (b)(45)

(A) Boundary

This area is bounded by the mean high tide line, and straight lines connecting the following points in the order listed except where noted:

36° 07.20' N. lat. 121° 38.00' W. long.;
36° 07.20' N. lat. 121° 39.00' W. long.;
36° 05.20' N. lat. 121° 38.00' W. long.;
36° 05.20' N. lat. 121° 41.25' W. long.; thence southward along the
three nautical mile offshore boundary to
36° 02.65' N. lat. 121° 39.70' W. long.; and
36° 02.65' N. lat. 121° 35.13' W. long.

(B) Permitted/Prohibited Uses

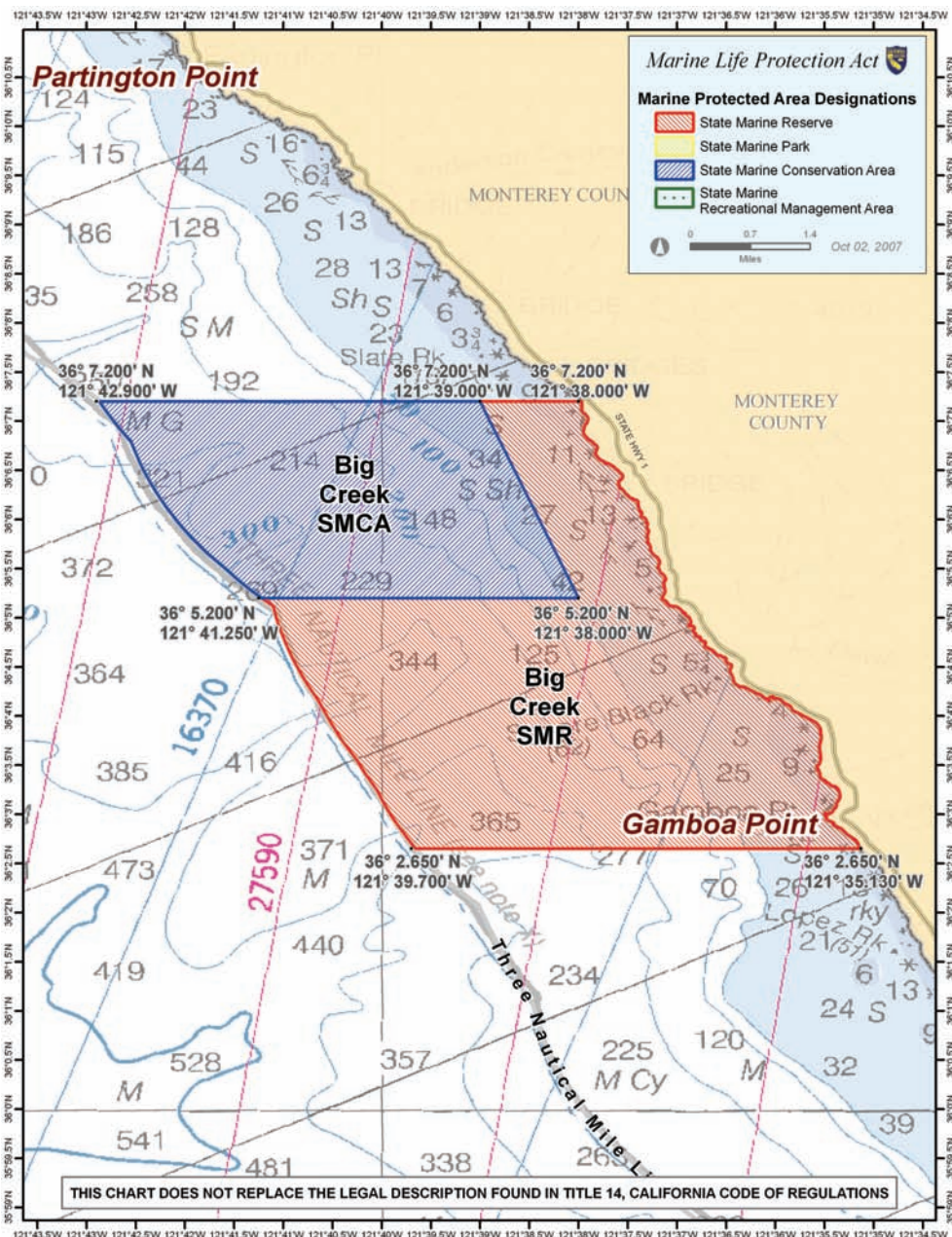
Take of all living marine resources is prohibited.

(C) Anchoring

Except as pursuant to Federal law or emergency caused by hazardous weather, it is unlawful to anchor or moor a vessel in waters shallower than 10 fathoms in the Big Creek State Marine Reserve.



Big Creek State Marine Conservation Area



Not For Use in Navigation



Boundary and Regulations - Big Creek SMCA *from California Code of Regulations, Title 14* **Section 632, sub-section (b)(46)**

(A) Boundary

This area is bounded by the three nautical mile offshore boundary and straight lines connecting the following points in the order listed except where noted:

36° 07.20' N. lat. 121° 39.00' W. long.;

36° 07.20' N. lat. 121° 42.90' W. long.; thence southward along the three nautical mile offshore boundary to

36° 05.20' N. lat. 121° 41.25' W. long.;

36° 05.20' N. lat. 121° 38.00' W. long.; and

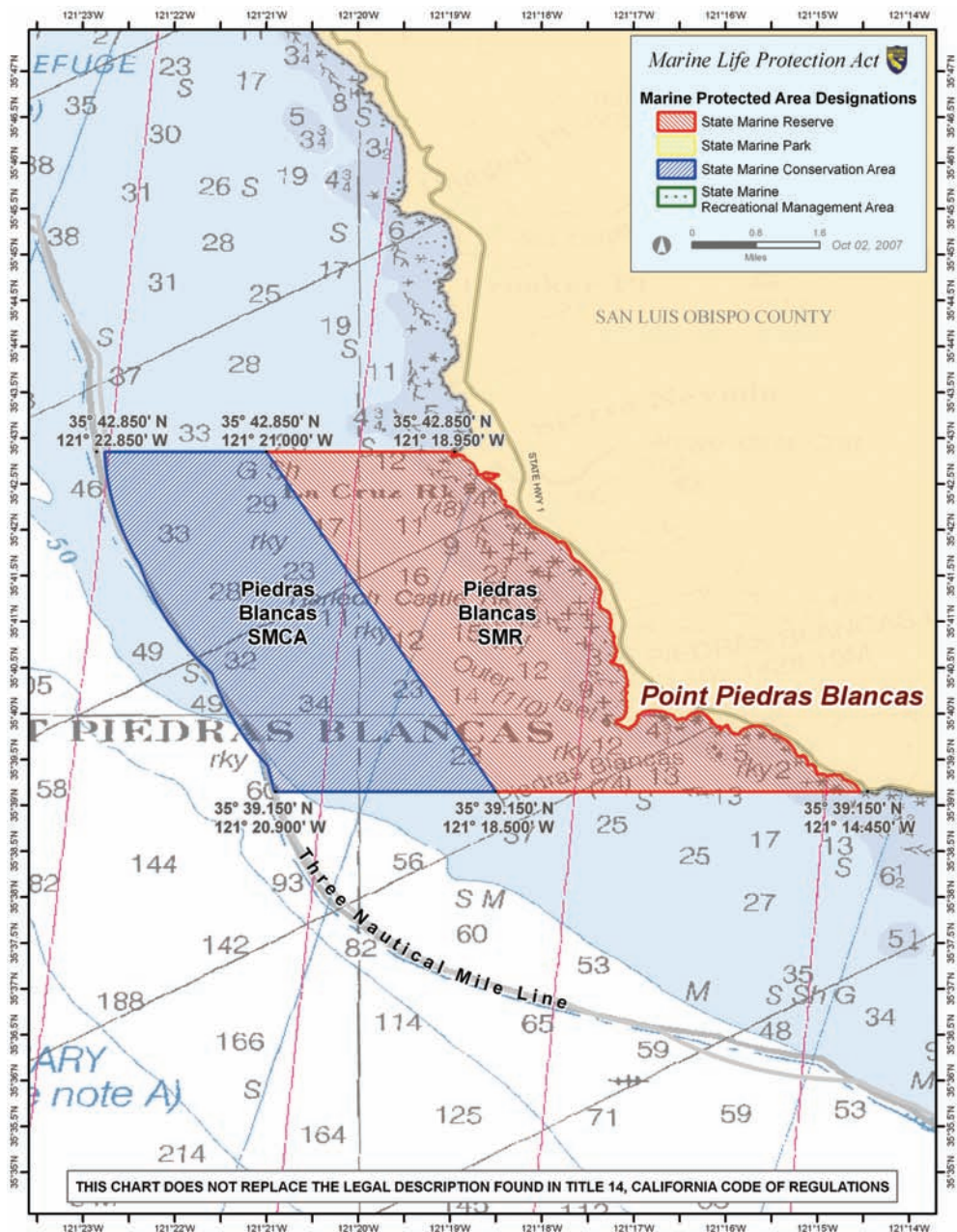
36° 07.20' N. lat. 121° 39.00' W. long.

(B) Permitted/Prohibited Uses

Take of all living marine resources is prohibited except the commercial and recreational take of salmon, albacore, and the commercial take of spot prawn.



Piedras Blancas State Marine Reserve



Not For Use in Navigation



Boundary and Regulations - Piedras Blancas SMR from California Code of Regulations, Title 14 Section 632, sub-section (b)(47)

(A) Boundary

This area is bounded by the mean high tide line and straight lines connecting the following points in the order listed:

35° 42.85' N. lat. 121° 18.95' W. long.;

35° 42.85' N. lat. 121° 21.00' W. long.;

35° 39.15' N. lat. 121° 18.50' W. long.; and

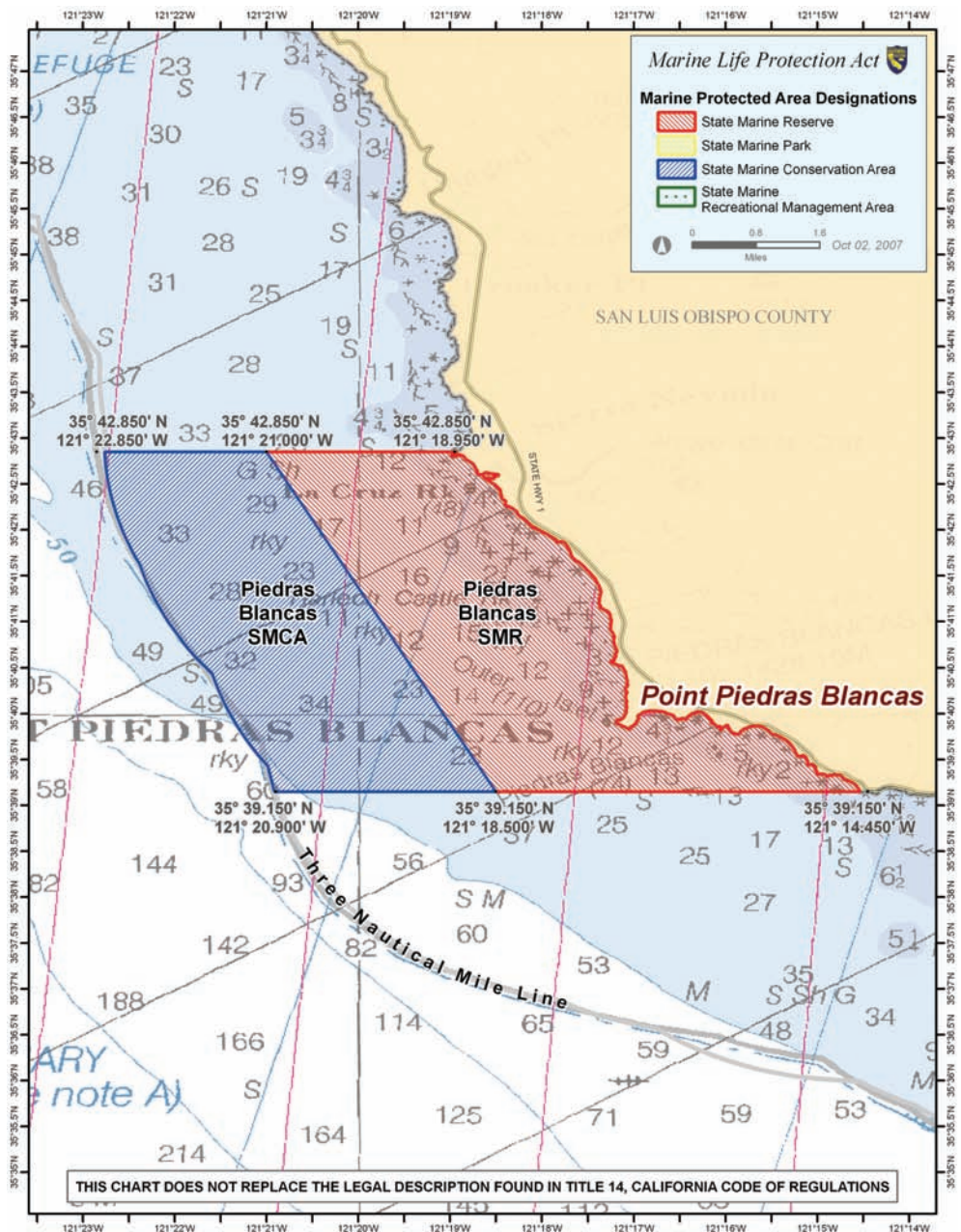
35° 39.15' N. lat. 121° 14.45' W. long.

(B) Permitted/Prohibited Uses

Take of all living marine resources is prohibited.



Piedras Blancas State Marine Conservation Area



Not For Use in Navigation



Boundary and Regulations - Piedras Blancas SMCA from California Code of Regulations, Title 14 Section 632, sub-section (b)(48)

(A) Boundary

This area is bounded by the mean high tide line and straight lines connecting the following points in the order listed except where noted:

35° 42.85' N. lat. 121° 21.00' W. long.;

35° 42.85' N. lat. 121° 22.85' W. long.; thence southward along the three nautical mile offshore boundary to

35° 39.15' N. lat. 121° 20.90' W. long.;

35° 39.15' N. lat. 121° 18.50' W. long.; and

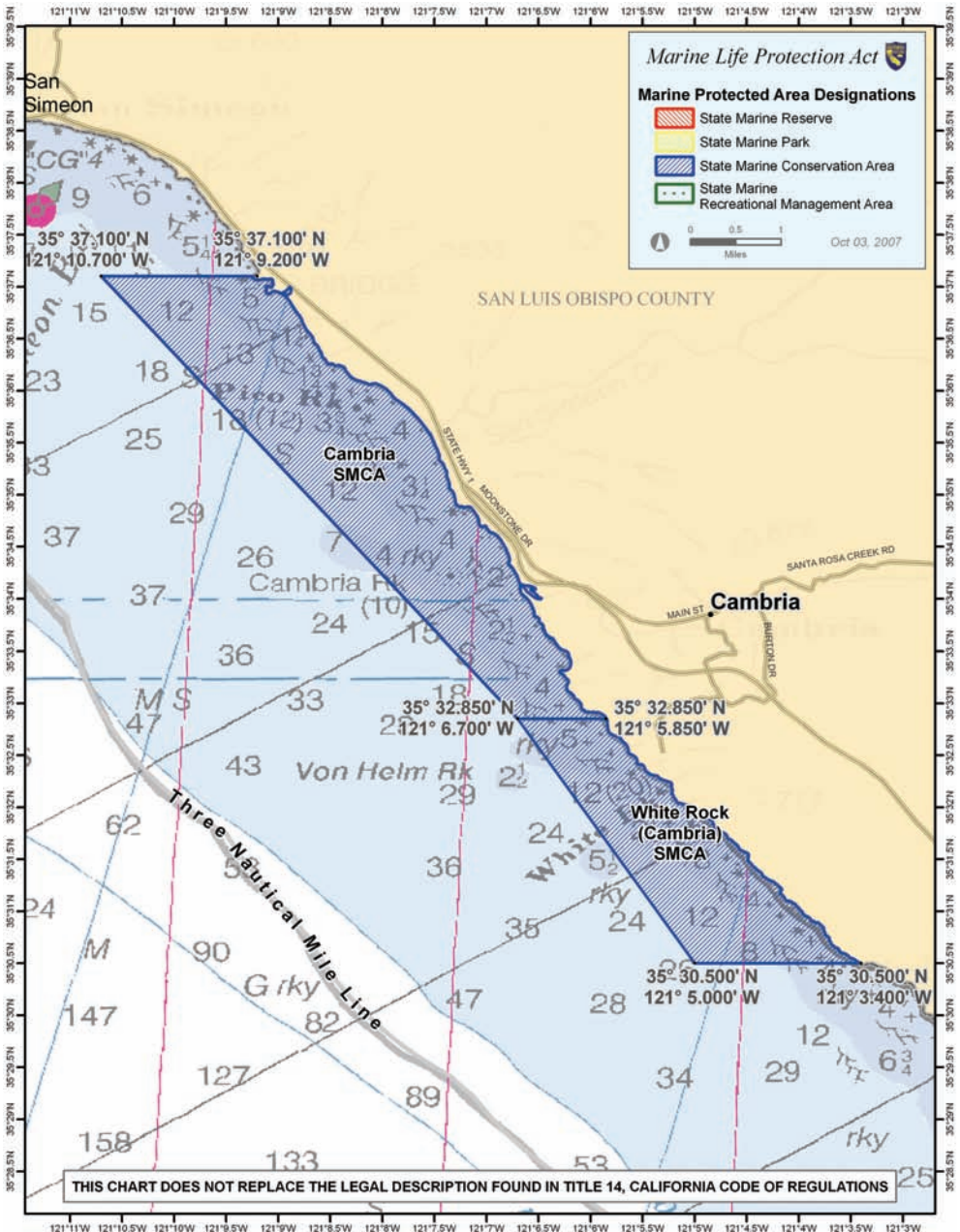
35° 42.85' N. lat. 121° 21.00' W. long.

(B) Permitted/Prohibited Uses

Take of all living marine resources is prohibited except the commercial and recreational take of salmon and albacore.



Cambria State Marine Conservation Area



Not For Use in Navigation



Boundary and Regulations - Cambria SMCA from California Code of Regulations, Title 14 Section 632, sub-section (b)(49)

(A) Boundary

This area is bounded by the mean high tide line and straight lines connecting the following points in the order listed:

35° 37.10' N. lat. 121° 09.20' W. long.;

35° 37.10' N. lat. 121° 10.70' W. long.;

35° 32.85' N. lat. 121° 06.70' W. long.; and

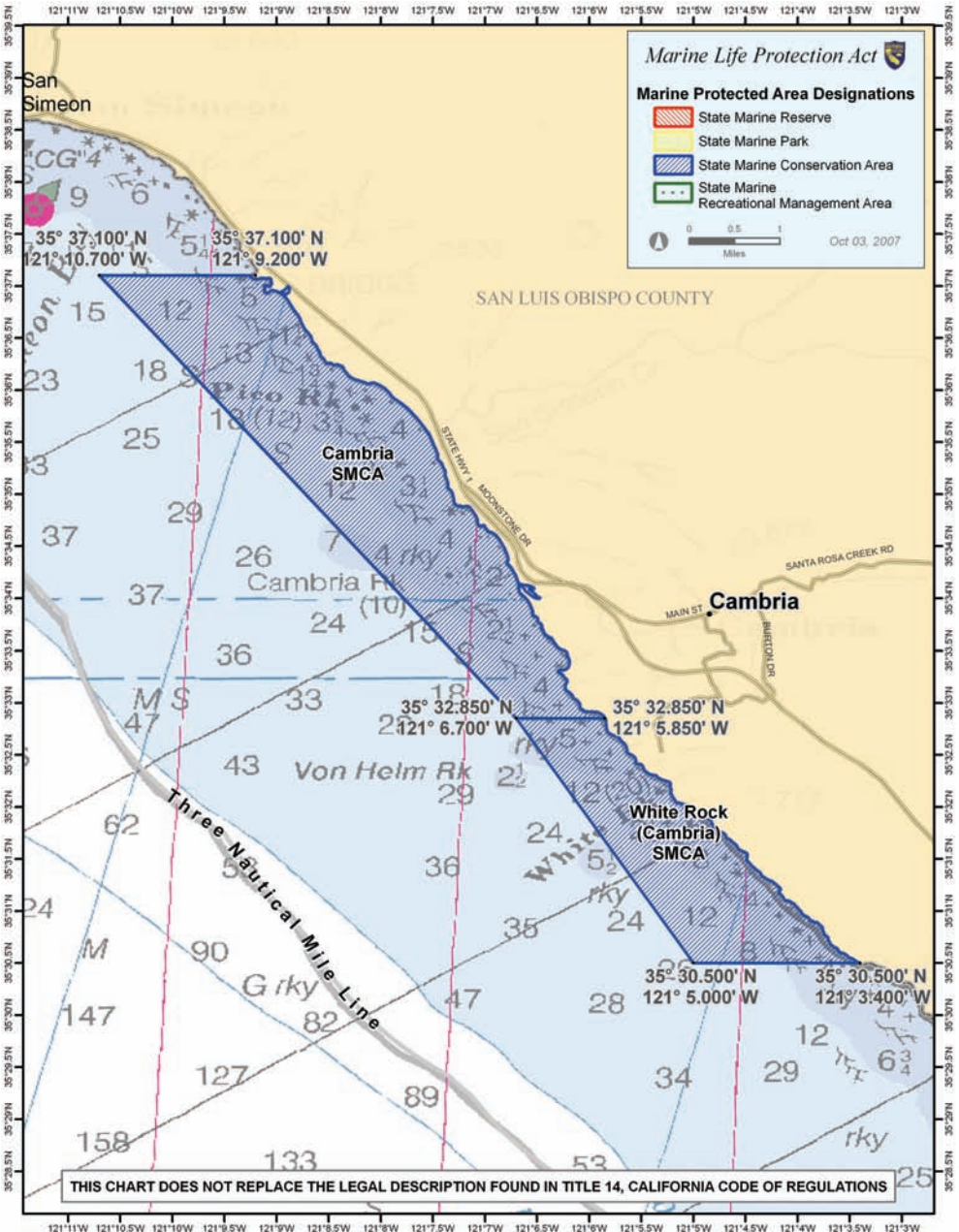
35° 32.85' N. lat. 121° 05.85' W. long.

(B) Permitted/Prohibited Uses

The commercial take of all living marine resources is prohibited. Recreational take is allowed.



White Rock (Cambria) State Marine Conservation Area



Not For Use in Navigation



Boundary and Regulations - White Rock (Cambria) SMCA from California Code of Regulations, Title 14 Section 632, sub-section (b)(50)

(A) Boundary

This area is bounded by the mean high tide line and straight lines connecting the following points in the order listed:

35° 32.85' N. lat. 121° 05.85' W. long.;
35° 32.85' N. lat. 121° 06.70' W. long.;
35° 30.50' N. lat. 121° 05.00' W. long.; and
35° 30.50' N. lat. 121° 03.40' W. long.

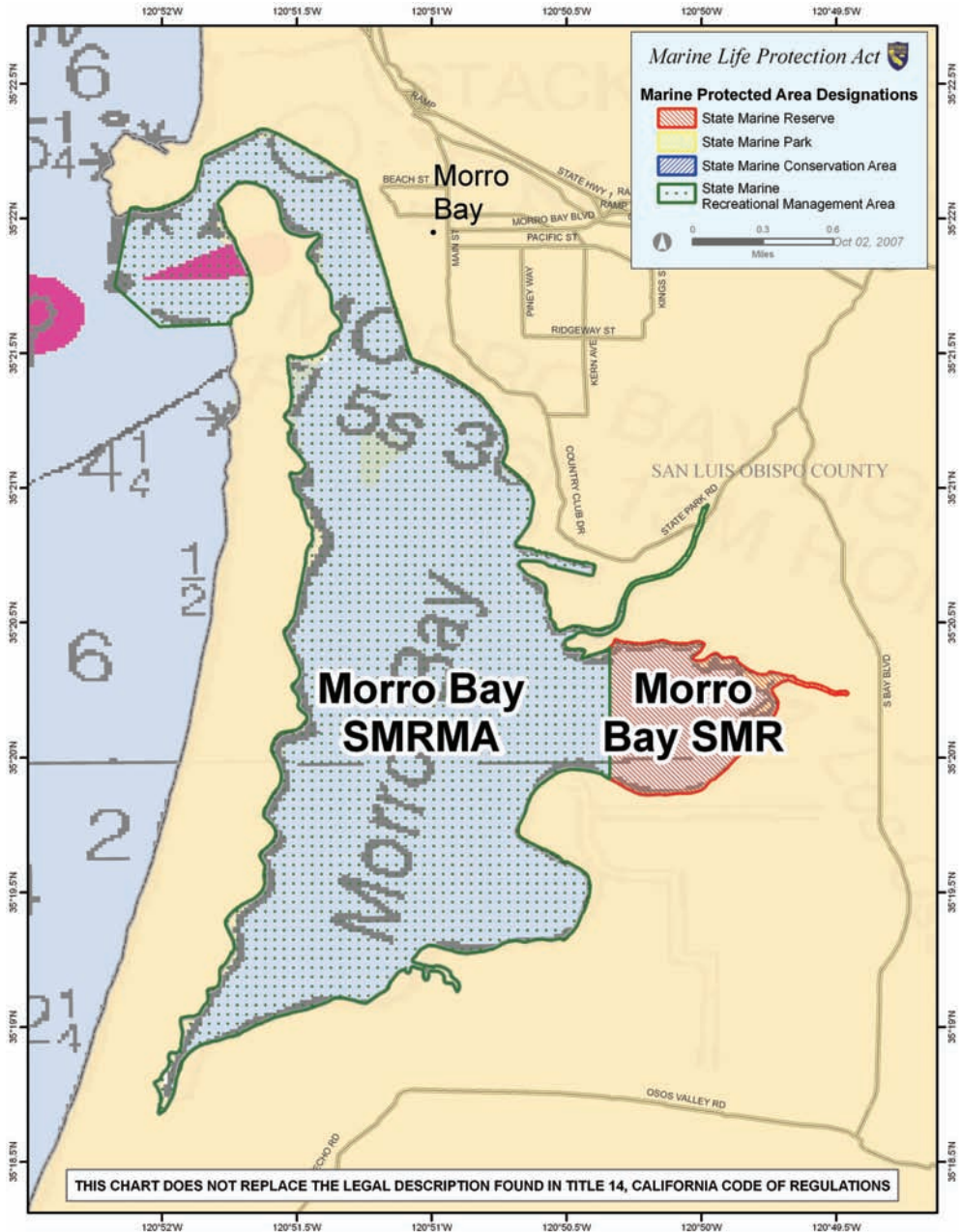
(B) Permitted/Prohibited Uses

Take of all living marine resources is prohibited except the commercial take of giant kelp (*Macrocystis pyrifera*) and bull kelp (*Nereocystis* spp.) under the following conditions:

1. A kelp harvester with a valid license issued pursuant to Section 165 and holding a valid lease to Administrative Kelp Bed 208 may take no more than 125 tons of kelp from the portion of Administrative Kelp Bed 208 within the White Rock (Cambria) State Marine Conservation Area in any calendar month.
2. Duplicate landing records must be kept on board the harvest vessel in accordance with the requirements of Section 165.



Morro Bay State Marine Recreational Management Area



Not For Use in Navigation



Boundary and Regulations - Morro Bay SMRMA *from California Code of Regulations, Title 14* **Section 632, sub-section (b)(51)**

(A) Boundary

This area includes the area below mean high tide within Morro Bay east of the Morro Bay entrance breakwater and west of longitude 120° 50.34' W.

(B) Permitted/Prohibited Uses

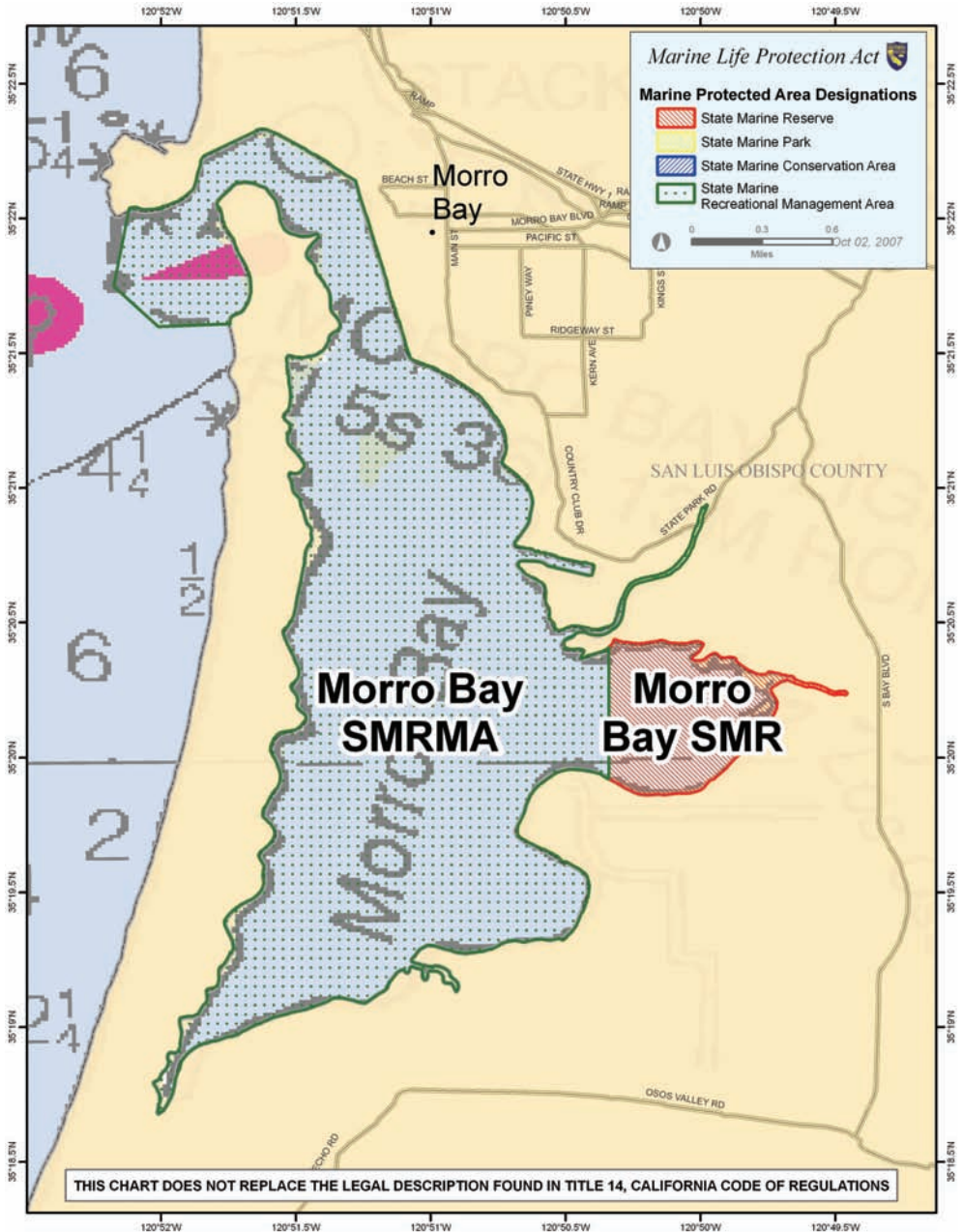
Recreational hunting of waterfowl is allowed unless otherwise restricted by hunting regulations (Sections 502, 550, 551, and 552).

(C) Take of all living marine resources is prohibited except the following activities are allowed north of latitude 35° 19.70' N:

1. The recreational take of finfish
2. Aquaculture of oysters, pursuant to a valid State water bottom lease and permit
3. Storing finfish taken outside the Morro Bay State Marine Recreational Management Area in a receiver for bait purposes



Morro Bay State Marine Reserve



Not For Use in Navigation



Boundary and Regulations - Morro Bay SMR *from California Code of Regulations, Title 14* **Section 632, sub-section (b)(52)**

(A) Boundary

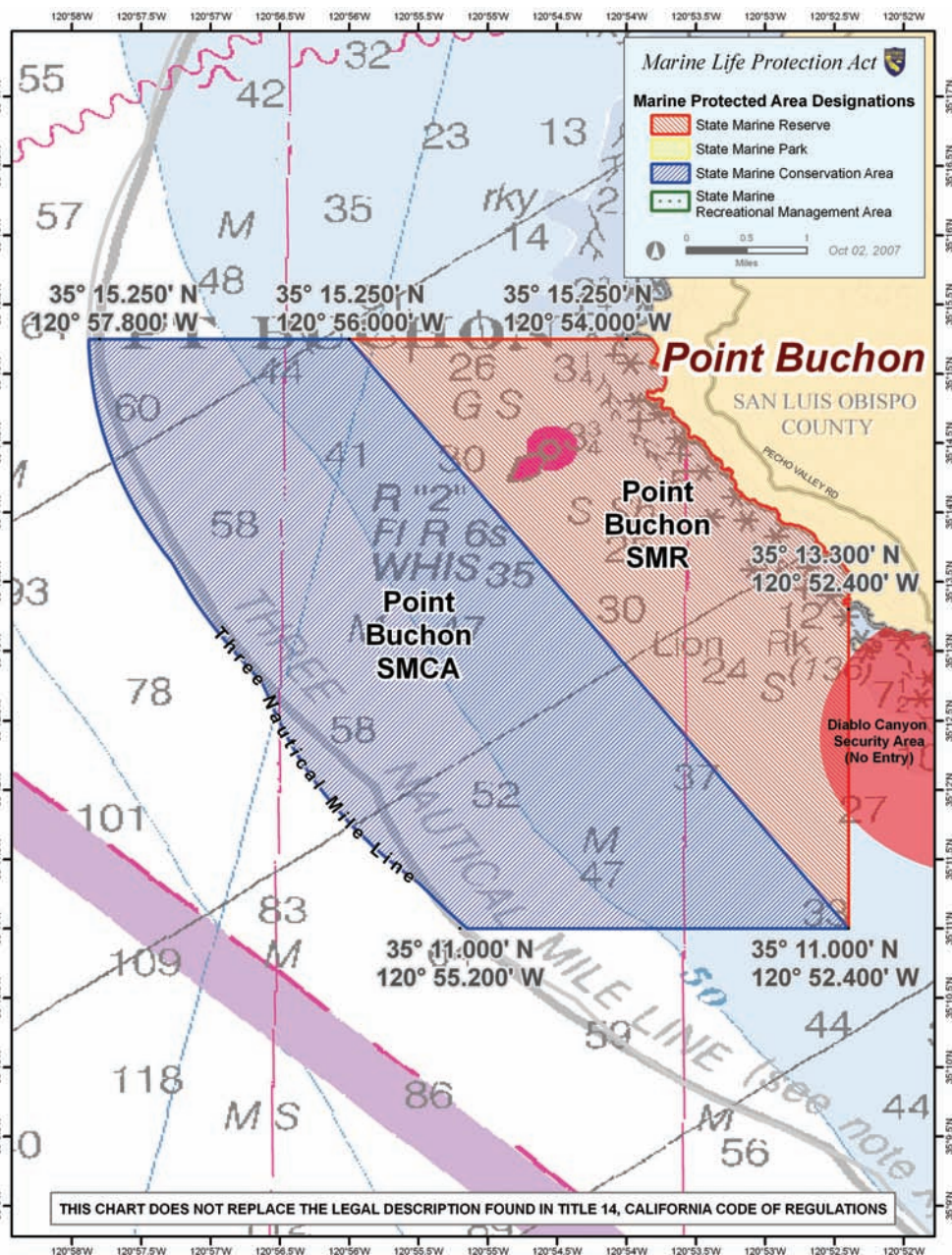
This area includes the area below mean high tide line within Morro Bay east of longitude **120° 50.34' W.**

(B) Permitted/Prohibited Uses

Take of all living marine resources is prohibited.



Point Buchon State Marine Reserve



Not For Use in Navigation



Boundary and Regulations - Point Buchon SMR from California Code of Regulations, Title 14 Section 632, sub-section (b)(53)

(A) Boundary

This area is bounded by the mean high tide line and straight lines connecting the following points in the order listed:

35° 15.25' N. lat. 120° 54.00' W. long.;

35° 15.25' N. lat. 120° 56.00' W. long.;

35° 11.00' N. lat. 120° 52.40' W. long.; and

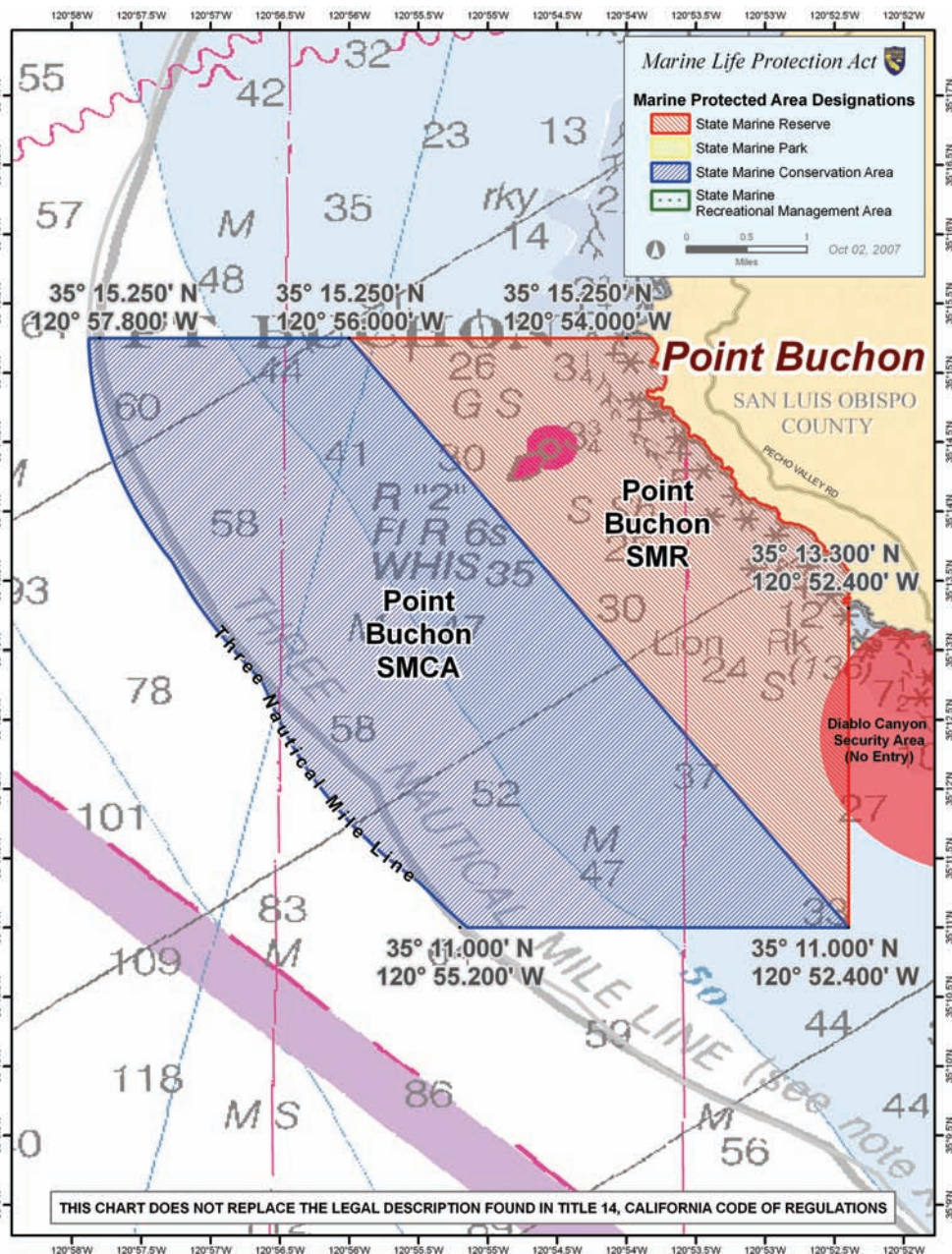
35° 13.30' N. lat. 120° 52.40' W. long.

(B) Permitted/Prohibited Uses

Take of all living marine resources is prohibited.



Point Buchon State Marine Conservation Area



Not For Use in Navigation



Boundary and Regulations - Point Buchon SMCA *from California Code of Regulations, Title 14* **Section 632, sub-section (b)(54)**

(A) Boundary

This area is bounded by straight lines connecting the following points in the order listed except where noted:

35° 15.25' N. lat. 120° 56.00' W. long.;

35° 15.25' N. lat. 120° 57.80' W. long.; thence southward along the three nautical mile offshore boundary to

35° 11.00' N. lat. 120° 55.20' W. long.;

35° 11.00' N. lat. 120° 52.40' W. long.; and

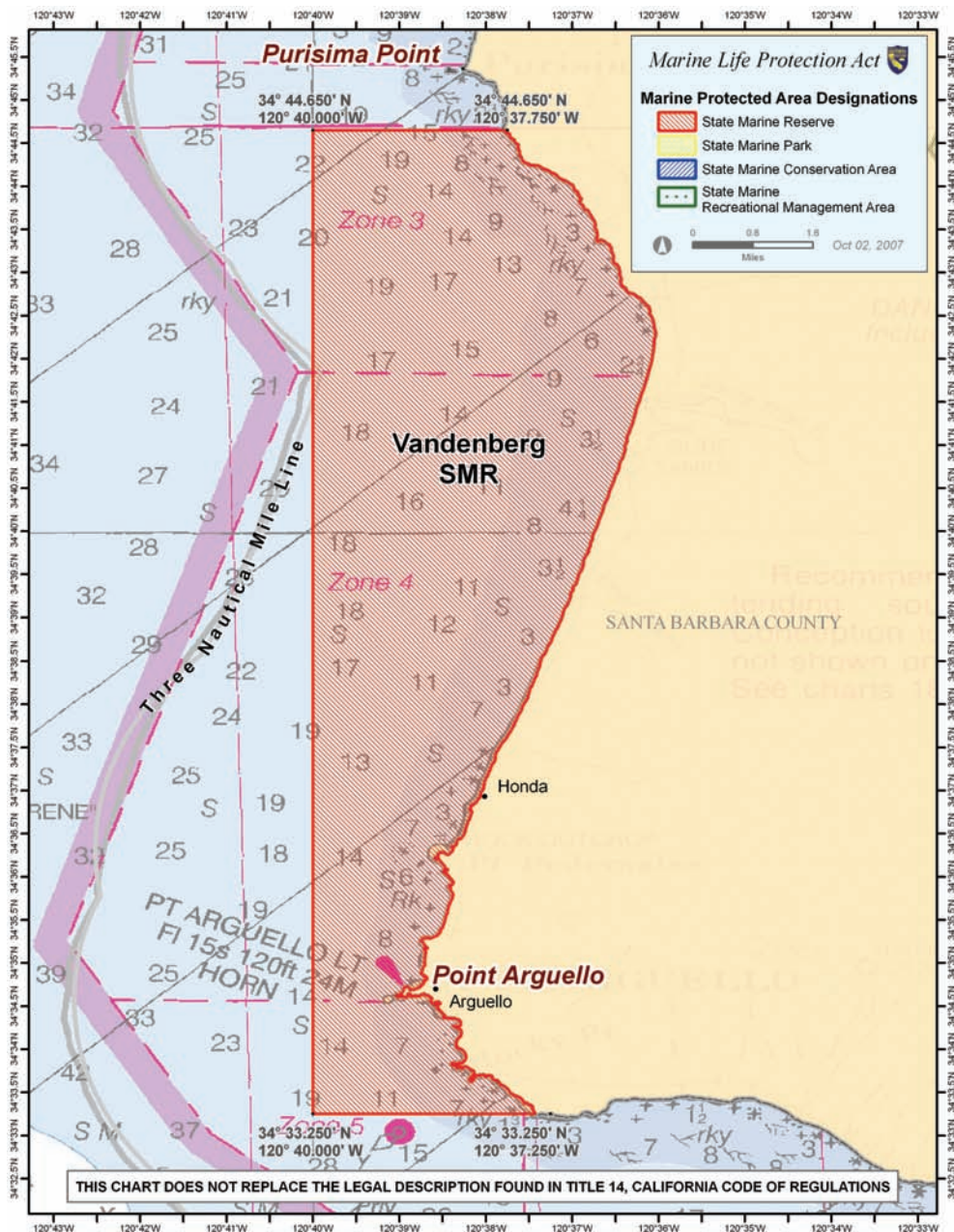
35° 15.25' N. lat. 120° 56.00' W. long.

(B) Permitted/Prohibited Uses

Take of all living marine resources is prohibited except the commercial and recreational take of salmon and albacore.



Vandenberg State Marine Reserve



Not For Use in Navigation



Boundary and Regulations - Vandenberg SMR from California Code of Regulations, Title 14 Section 632, sub-section (b)(55)

(A) Boundary

This area is bounded by the mean high tide line and straight lines connecting the following points in the order listed:

34° 44.65' N. lat. 120° 37.75' W. long.;
34° 44.65' N. lat. 120° 40.00' W. long.;
34° 33.25' N. lat. 120° 40.00' W. long.; and
34° 33.25' N. lat. 120° 37.25' W. long.

(B) Permitted/Prohibited Uses

Take of all living marine resources is prohibited except take incidental to base operations and commercial space launch operations identified by the Vandenberg Air Force Base Commander as mission critical.

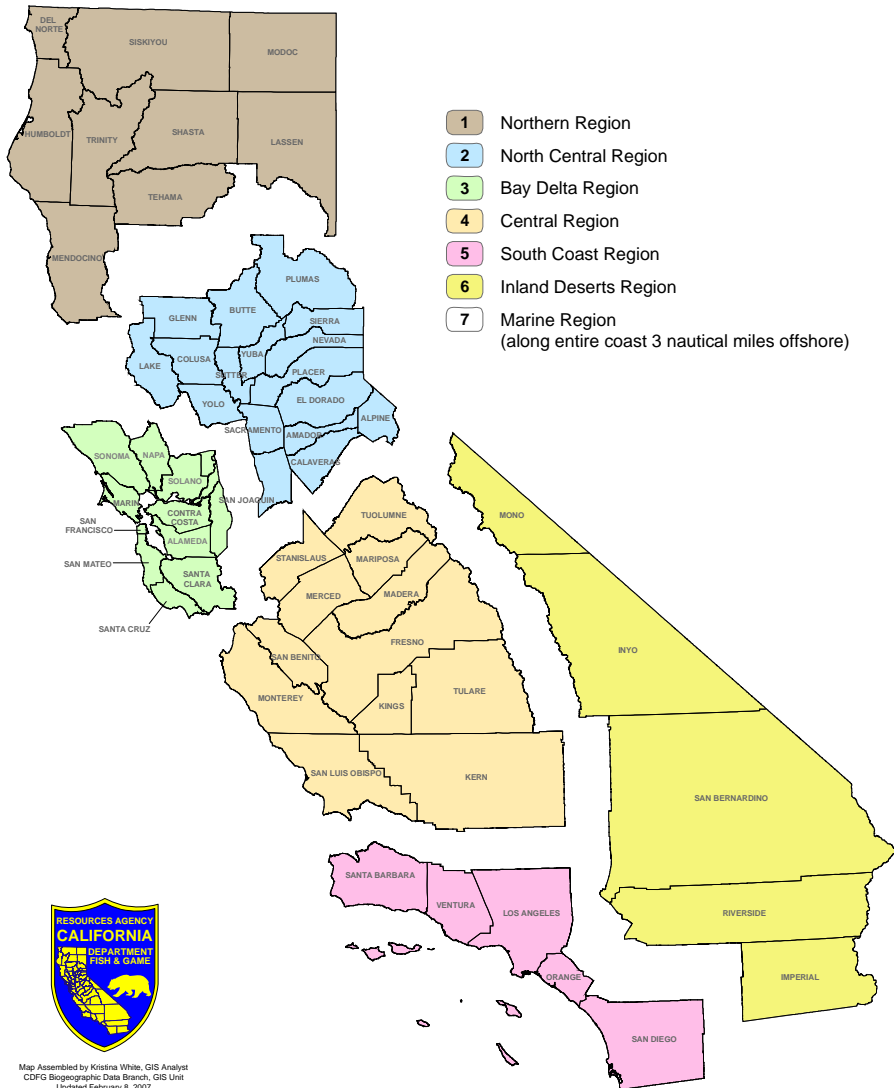
(C) Public Entry

Public entry into the Vandenberg State Marine Reserve may be restricted at the discretion of the department to protect wildlife, aquatic life, or habitat or by the Commander of Vandenberg Air Force Base to protect and provide safety for base operations.

(D) The department shall enter into a Memorandum of Understanding (MOU) with the Commander of Vandenberg Air Force Base for the mutually beneficial management and administration of the Vandenberg State Marine Reserve. The MOU shall include, but not be limited to, the identification of Vandenberg Air Force Base's national defense mission activities that are unrestricted by the subject regulations and details on management and administrative roles and responsibilities.

[illegible]

2007 California Department of Fish and Game Regions



Map Assembled by Kristina White, GIS Analyst
 CDGF Biogeographic Data Branch, GIS Unit
 Updated February 8, 2007

